



BUSINESS AFFAIRS

Planning, Design
& Construction

Space Planning & Management



Instructional Space Utilization Analysis

2016 Fall Semester

TABLE OF CONTENTS

Executive Summary	i
Room Type Summary Table	1
Graph of Number of Instructional Rooms by Room Type.....	2
Graph of Net Assignable Square Feet (NASF) of Instructional Rooms by Room Type.....	3
Graph of Weekly Student Contact Hours (WSCH) in Instructional Rooms by Room Type	4
Graph of Enrollment vs. Room Capacity.....	5
Number of Classes by Time and Day Table.....	6
Number of Classes by Time and Day Graph – Monday, Wednesday and Friday.....	7
Number of Classes by Time and Day Graph– Tuesday and Thursday.....	8
Enrollment by Time and Day Table.....	9
Enrollment by Time and Day Graph – Monday, Wednesday and Friday.....	10
Enrollment by Time and Day Graph – Tuesday and Thursday.....	11
Room Use by Building.....	12
Classrooms.....	28
Classroom Utilization Overview.....	28
Classroom Utilization by Number of Student Stations	29
Classroom Utilization by Number of Student Stations – Graphs.....	30
Analysis of Individual Classrooms	31
Seminar Rooms.....	39
Seminar Room Utilization Overview.....	39
Seminar Room Utilization by Number of Student Stations	40
Seminar Room Utilization by Number of Student Stations – Graphs.....	41
Analysis of Individual Seminar Rooms	42
Lecture Halls	44
Lecture Hall Utilization Overview	44
Lecture Hall Utilization by Number of Student Stations.....	45

Lecture Hall Utilization by Number of Student Stations – Graphs.....	46
Analysis of Individual Lecture Halls.....	47
Computer Instructional Rooms.....	49
Computer Instructional Room Utilization Overview.....	49
Computer Instructional Room Utilization by Number of Student Stations.....	50
Analysis of Individual Computer Instructional Rooms.....	51
Collaborative Classrooms.....	52
Collaborative Classrooms Utilization Overview.....	52
Collaborative Classrooms Utilization by Number of Student Stations.....	53
Analysis of Individual Collaborative Classrooms.....	54
Class Laboratories.....	55
Class Laboratories Utilization Overview.....	55
Class Laboratories Utilization by Number of Student Stations.....	56
Analysis of Type A Class Laboratories.....	57
Analysis of Type B Class Laboratories.....	58
Analysis of Type C Class Laboratories.....	60
Class Laboratories Utilization by Department.....	62
Glossary.....	64
Appendix A.....	66
Non Instructional Room Type Summary.....	66

EXECUTIVE SUMMARY

BACKGROUND

This report analyzes the utilization of instructional space at the University of Arizona for the Fall 2016 semester. Instructional space for this analysis includes class laboratories, classrooms, collaborative classrooms, computer instructional rooms, lecture halls and seminar rooms used Monday through Friday between 8:00 AM and 5:00 PM. Data for this analysis comes from the University's Physical Space Inventory and official course enrollment taken on the 21st day of class for that semester. The methodology applied is based on the Council of Educational Facility Planners, Inc. (CEFPI) *Space Planning Guidelines*, which were adopted by the Arizona Board of Regents in 1992, and updated and revised in 1997, thereby providing consistent space management guidelines for the three state universities.

The results of the analyses are used as an internal management tool for assessing current utilization of instructional space and maximizing the use of existing facilities. Any questions can be directed to Space Planning & Management at pd-c-space@email.arizona.edu.

University of Arizona
Instructional Space Utilization Analysis | 2016 Fall Semester

HIGHLIGHTS

Instructional space utilization for the Fall 2016 semester showed:

- The basis for this analysis are the student credit hours converted to weekly student contact hours (WSCH).
 - A. Of the **606,134** student credit hours (SCH) generated in the Fall 2016 semester, **406,091** (67%) SCH were reviewed in this analysis, which equates to **418,478** weekly student contact hours (WSCH).
 - B. **33%** of all classes took place in non-instructional space (200,040 SCH). These classes were not included in this analysis due to their use of non-instructional space (e.g. online, off-campus, independent study, etc.), and/or because they were scheduled outside the analysis limits (e.g. weekends, before 8 AM, after 5PM).
- **4,071** courses were held each week in **445** rooms, in **91** different university buildings, utilizing **487,147** Net Assignable Square Feet (NASF).
- Overall class size averaged **34** students per class.
- Almost **7%** of classes contained 100 or more students (272 of the 4,071 courses).
- **66%** of the classes had an enrollment of **29** or fewer students (2,689 of the 4,071 courses).
- Enrollment data indicates that the University reaches its peak student population between **2:30 and 2:59 PM** on **Thursdays** with **13,603** students enrolled in that time period.

This report classifies **445** instructional rooms into five room type categories:

Room Type Category	Count of Rooms
Classrooms	193
Class Laboratories	138
Collaborative Classrooms	9
Computer Instructional Classrooms	12
Lecture Halls	42
Seminar Rooms	51
TOTAL INSTRUCTIONAL ROOMS:	445

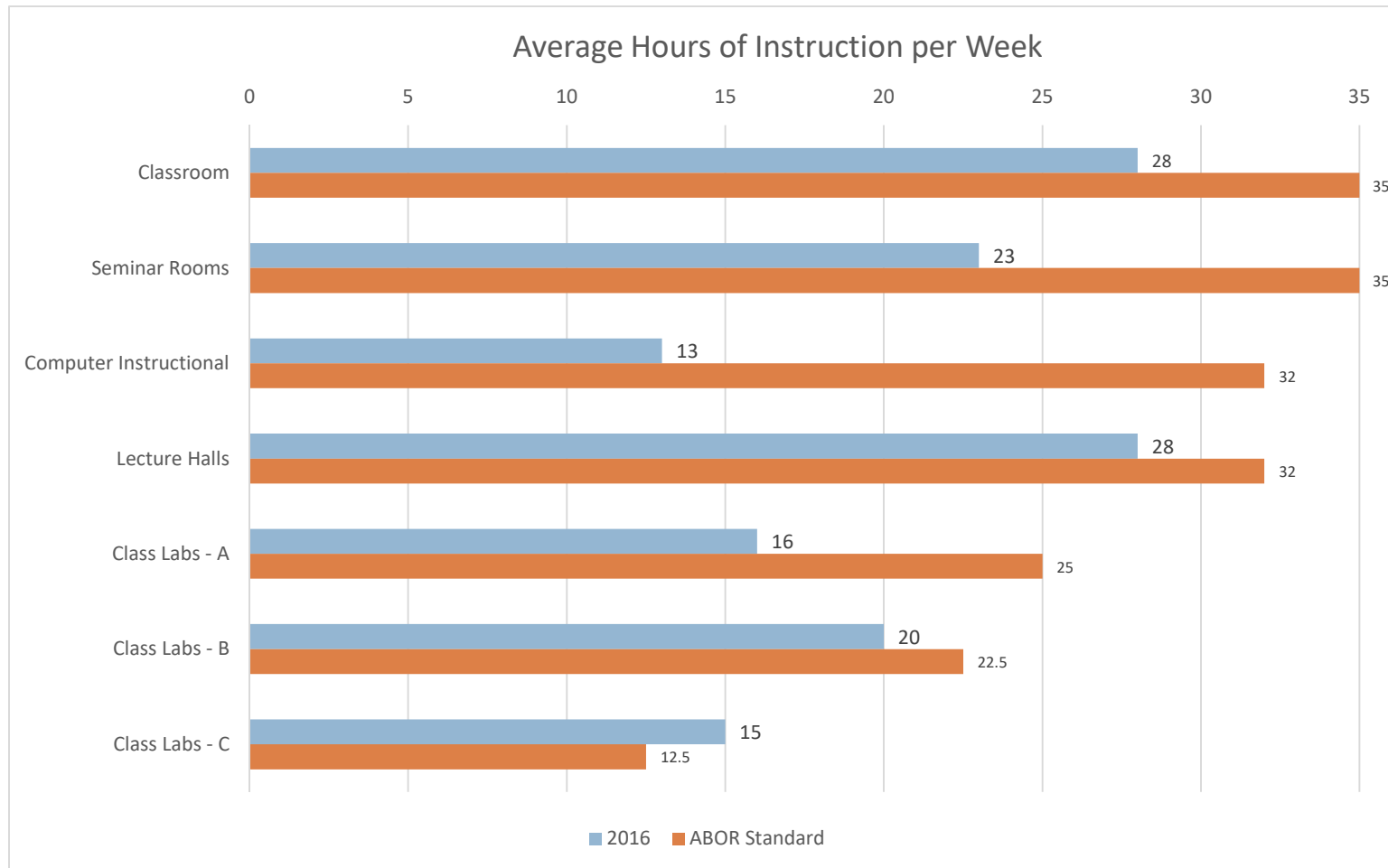
The Glossary Section contains the definition of each room type.

INSTRUCTIONAL ROOM TYPE COMPARISONS

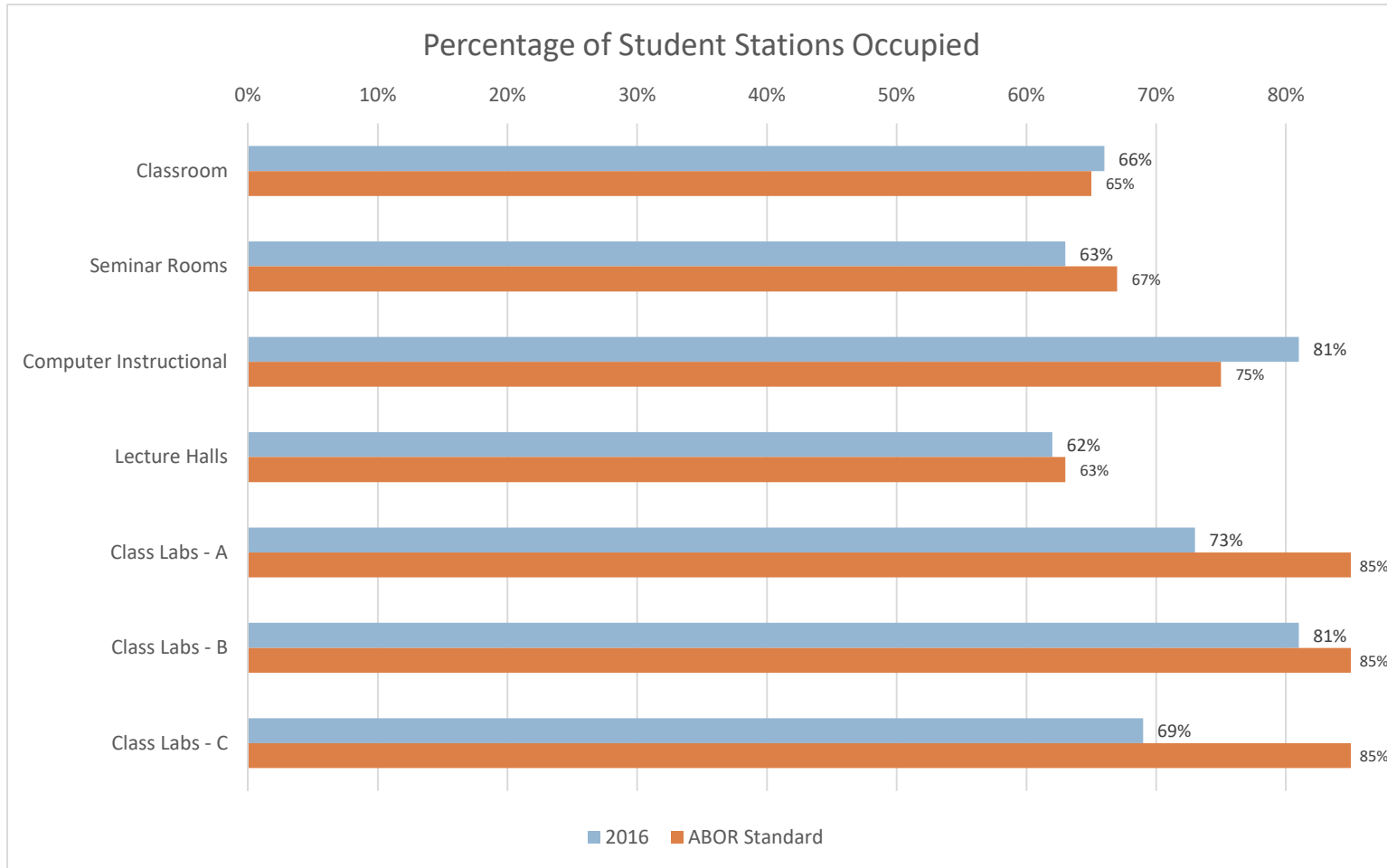
The following charts illustrate two key factors in room utilization, both influenced by the manner in which the rooms are scheduled:

- 1) Average hours of instruction per week;
- 2) Percentage of student stations occupied.

Room & Course Scheduling handles the scheduling of the majority of classrooms, lecture halls and seminar rooms, while departments schedule virtually all class laboratories and computer instructional rooms. Room classifications in the non-instructional category include conference rooms, assembly rooms, research labs, open labs, offices, open computer sites, study rooms and are addressed in Appendix A.



University of Arizona
Instructional Space Utilization Analysis | 2016 Fall Semester

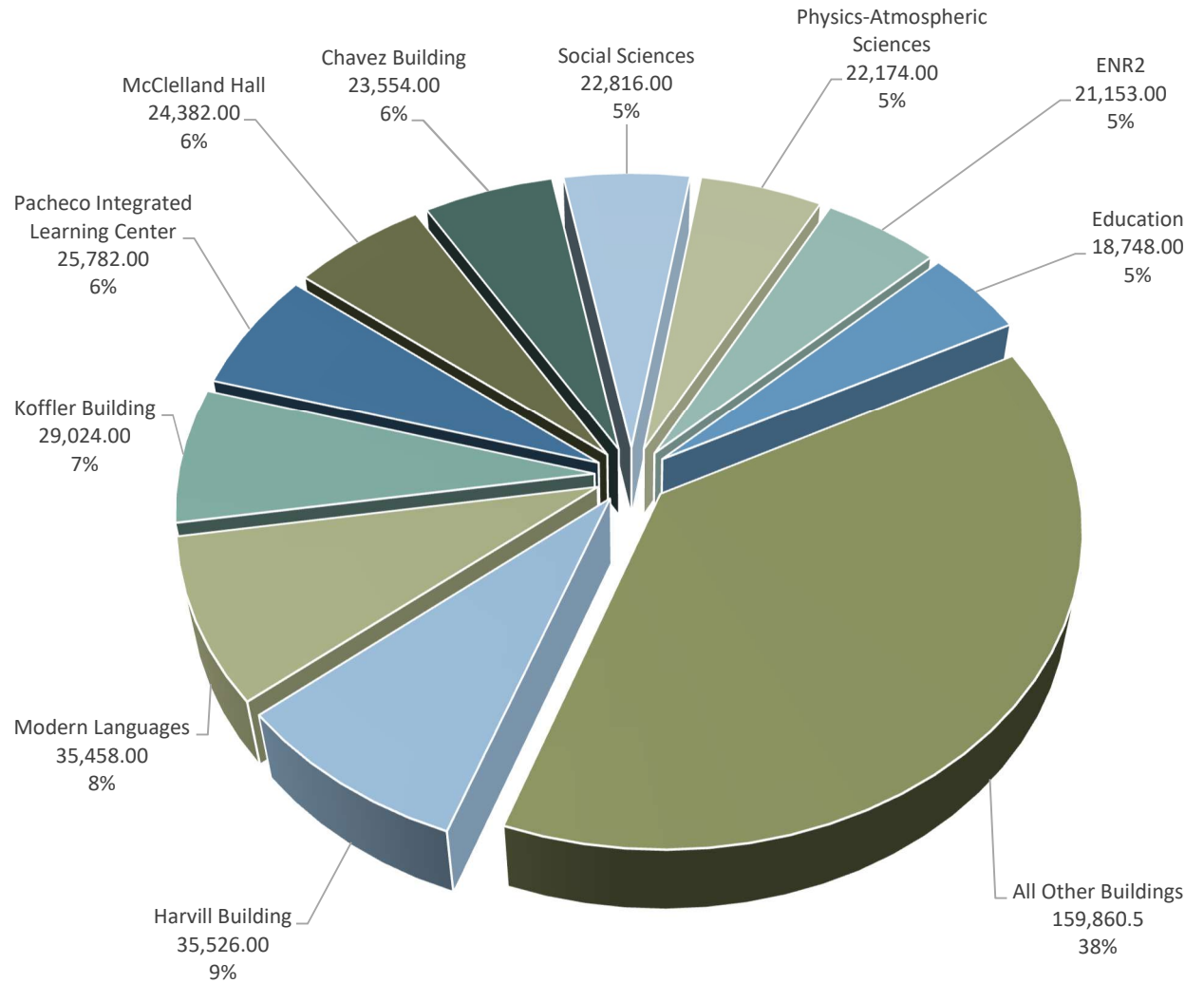


University of Arizona
Instructional Space Utilization Analysis | 2016 Fall Semester

BUILDINGS GENERATING THE MOST WSCH

Ten of the 91 buildings in this analysis generated 62% of the Weekly Student Contact Hours (WSCH):

Building Name	WSCH
Harvill Building	35,526
Modern Languages	35,458
Koffler Building	29,024
Pacheco Integrated Learning Center	25,782
McClelland Hall	24,382
Chavez Building	23,554
Social Sciences	22,816
Physics-Atmospheric Sciences	22,174
ENR2	21,153
Education	18,748

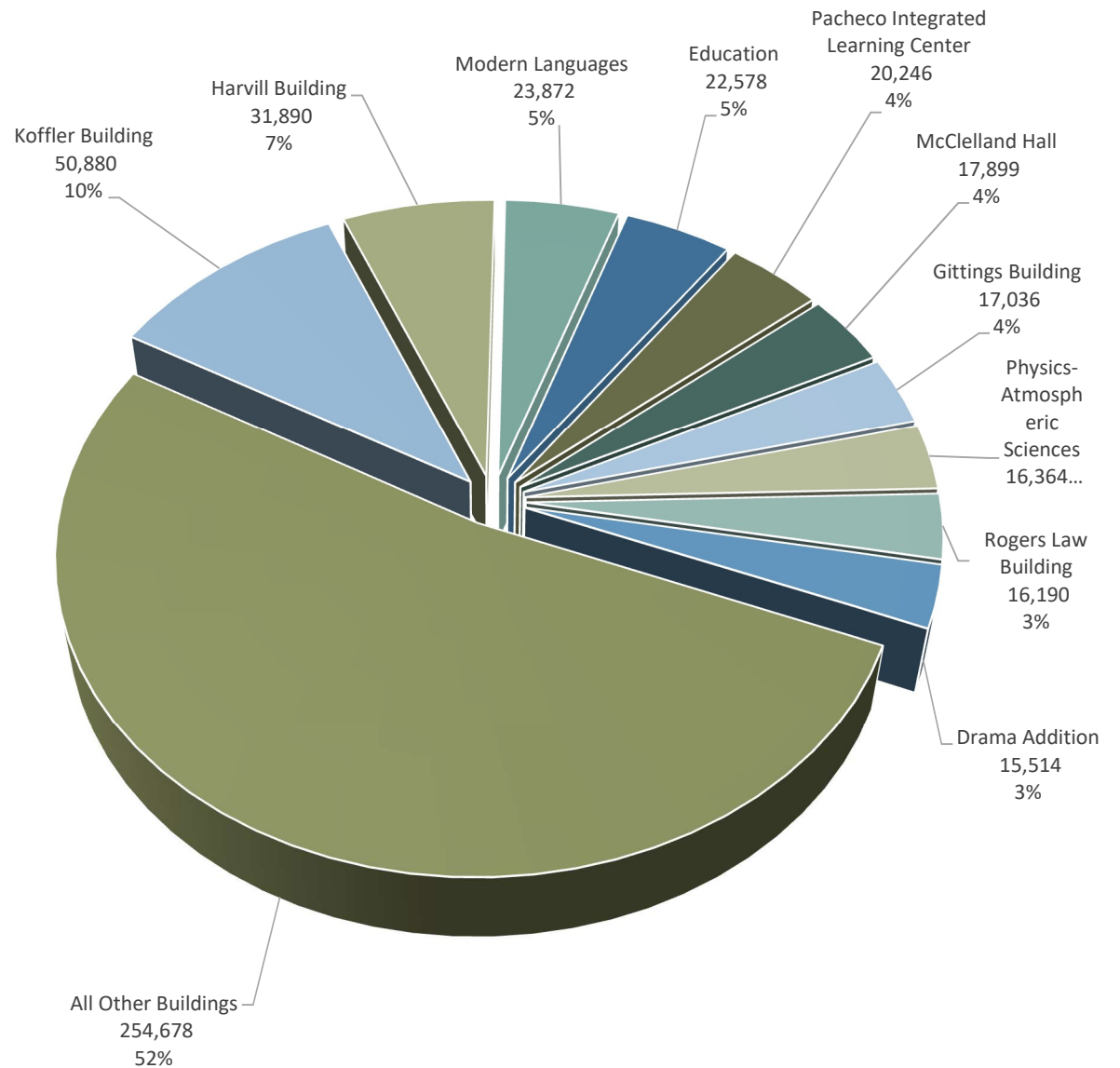


University of Arizona
Instructional Space Utilization Analysis | 2016 Fall Semester

BUILDINGS WITH THE MOST INSTRUCTIONAL SPACE

Ten of the 91 buildings in this analysis provided 48% of the instructional space:

Building Name	Total Instructional Space (sf)
Koffler Building	50,880
Harvill Building	31,890
Modern Languages	23,872
Education	22,578
Pacheco Integrated Learning Center	20,246
McClelland Hall	17,899
Gittings Building	17,036
Physics-Atmospheric Sciences (PAS)	16,364
Rogers Law Building	16,190
Drama Addition	15,514



University of Arizona
Instructional Space Utilization Analysis | 2016 Fall Semester

SEATING CAPACITY BY INSTRUCTIONAL ROOM TYPE

The following table shows the count of instructional rooms in each capacity range.

Instructional Room Type	Room Capacity Range										TOTAL COUNT
	<20	20-29	30-39	40-49	50-59	60-69	70-79	80-89	90-99	+100	
Classroom		41	37	52	29	14	8	7		5	193
Collaborative Classrooms		1	1			3	1		1	2	9
Lecture Hall						1	1	3	6	31	42
Seminar Room	7	31	9	2	1	1					51
SUBTOTAL	7	73	47	54	30	19	10	10	7	38	295
Class Laboratory	22	71	22	5	8	4	4	1		1	138
Computer Instruction Classroom	3	6	2	1							12
TOTAL	32	150	71	60	38	23	14	11	7	39	445

- The number of students stations (also referred as “capacity”) in each room ranged from six to 575.

AVERAGE ENROLLMENT BY SEATING CAPACITY OF INSTRUCTIONAL ROOM TYPES

The following table shows the average student enrollment of each instructional room type, in each capacity range.

Instructional Room Type	Room Capacity Range										Average Enrollment
	<20	20-29	30-39	40-49	50-59	60-69	70-79	80-89	90-99	+100	
Class Laboratory	12	21	18	23	23	30	27	29		21	21
Classrooms		13	22	24	29	40	50	86		98	43
Collaborative Classrooms		15	21			39	52		76	136	68
Computer Instruction Classroom	17	20	14	18							17
Lecture Hall						36	84	50	42	89	63
Seminar Room	10	14	16	31	16	27					17

- The total enrollment per class ranged from one to 572

INSTRUCTIONAL SPACE UTILIZATION ANALYSIS FALL 2016 SEMESTER

INTRODUCTION

This analysis was undertaken to determine the instructional space utilization for the Fall 2016 semester using official enrollment data from the 21st day of classes. The results of the analysis are used as an internal management tool for assessment of current utilization of instructional space and maximizing the use of existing facilities.

METHODOLOGY

This analysis applies the methodology of the Council of Educational Facility Planners, Inc. (CEFPI) *Space Planning Guidelines*. Revised CEFPI guidelines were adopted by the Arizona Board of Regents (ABOR) Space Management Committee in fiscal year 1997-98.

The three major factors examined in these analyses are:

- 1) The average hours of instruction per week in each room.
- 2) The average number of student stations occupied during those classes.
- 3) The net assignable square feet (NASF) per student station.

CLASSROOMS

The first analysis factor focuses on the average scheduled hours of instruction held per week in classrooms. According to ABOR guidelines, any classroom that is not being scheduled for 35 hours is considered underutilized. Utilization of centrally scheduled classrooms is higher than that of departmentally scheduled rooms. The 166 centrally scheduled classrooms averaged 30 hours of instruction per week, while the 27 departmentally controlled classrooms averaged 16 hours of instruction per week.

The second factor analyzes whether or not the size of the class enrollment is appropriate for the capacity of each room. ABOR guidelines recommend an average station occupancy rate of 65% as a minimum utilization standard. Centrally scheduled classrooms met ABOR guidelines by averaging 67% occupancy, while departmentally scheduled classrooms averaged 59%.

The third factor analyzes the net assignable square feet (NASF) per student station, which reflects the amount of square footage utilized for each student station. ABOR guidelines indicate a standard of 19 NASF per student station in classrooms. Centrally scheduled classrooms averaged 17 NASF per student station, while departmentally scheduled classrooms averaged 25 NASF.

COLLABORATIVE CLASSROOMS

The classification “Collaborative Classrooms” was introduced this semester (Fall 2016), and includes classrooms with movable tables and chairs arranged for small group collaboration. Specific ABOR guidelines have not been adopted for this room type. Seminar Rooms are comparable in function and layout. Eight out of the nine collaborative classrooms were centrally scheduled and averaged 31 hours of weekly instruction, 71% occupancy and 22 NASF per student station. The one room departmentally scheduled averaged 44 hour of weekly instruction, 69% of occupancy and 23 NASF per student station.

SEMINAR ROOMS

Seminar rooms have a typical capacity of 30 stations and are distinguished by the presence of tables and chairs. ABOR guidelines indicate 35 hours of instruction per week with at least 67% of the available seats filled and 22 NASF per student station. On average, departments utilized their seminar rooms for 17 hours per week at 57% occupancy with 30 NASF per student station, while centrally scheduled rooms averaged 26 hours of instruction per week at 66% occupancy with 19 NASF per student station.

COMPUTER INSTRUCTIONAL CLASSROOMS

The main characteristic of computer instructional rooms is the presence of computers at each student workstation. ABOR guidelines call for an average of 32 weekly class hours, an occupancy level of 75% and 32 square feet per student station. During the Fall 2016 semester, all computer instructional classrooms were departmentally scheduled, reaching an average of 13 hours of instruction per week with 81% occupancy and providing 44 square feet per student station. This data indicates that even though these classrooms are not used frequently, they are almost fully occupied when in use and in compliance with the ABOR standard for NASF per student.

LECTURE HALLS

The main characteristics of lecture halls are their “auditorium” type, fixed seating arrangements and their large seating capacities. The 34 centrally scheduled lecture halls averaged a use of 31 hours per week, with an average occupancy of 69%. The eight departmentally scheduled lecture halls were used an average of 14 hours per week, at an average 32% occupancy rate. ABOR guidelines call for an average of 32 weekly class hours and an occupancy level of 63%. The standard student station size for lecture halls under the guidelines is 17 square feet. Both centrally scheduled and departmentally scheduled lecture halls averaged slightly over 13 NASF per student station.

CLASS LABORATORIES

Departments schedule the majority of class laboratories, due to the variety of the materials and specialized equipment necessary to support each discipline. Class labs are divided into three subcategories: lab types A, B and C, depending on their requirements of student station size.

The ABOR guidelines for Type A labs (such as business and social sciences) are 25 weekly class hours at an occupancy of 85%. Type A labs use was below the standard, averaging 16 weekly class hours with 73% occupancy. There were three centrally scheduled Type A class labs, which averaged 22 hours of weekly instruction at 64% occupancy, while the 16 departmentally scheduled Type A class labs averaged 15 hours of weekly instruction at 75% occupancy.

For Type B class labs (such as physical and biological sciences), the ABOR guidelines call for 22.5 weekly class hours at an occupancy rate of 85%. All Type B class labs in this analysis were departmentally scheduled and averaged eight hours of weekly instruction at 81% occupancy.

For Type C class labs (such as engineering, agriculture and health sciences), the ABOR guidelines are expected to be used at least 12.5 hours per week at 85% occupancy. Type C labs surpassed the weekly class hour standard, averaging 15 hours of instruction per week, however the average occupancy was below standard at 69%.

NASF per student varies per discipline and can be consulted in the Class Lab section reports.

NON-INSTRUCTIONAL ROOMS

There were 151 locations not covered by CEFPI guidelines used for instruction during Fall 2016. These rooms generated 25,969 WSCH. Some of the types of rooms in this category include conference rooms, research labs and their associated service rooms, offices and assembly rooms. See Appendix A for additional information.

University of Arizona
Instructional Space Utilization Analysis | 2016 Fall Semester

ROOM TYPE SUMMARY TABLE

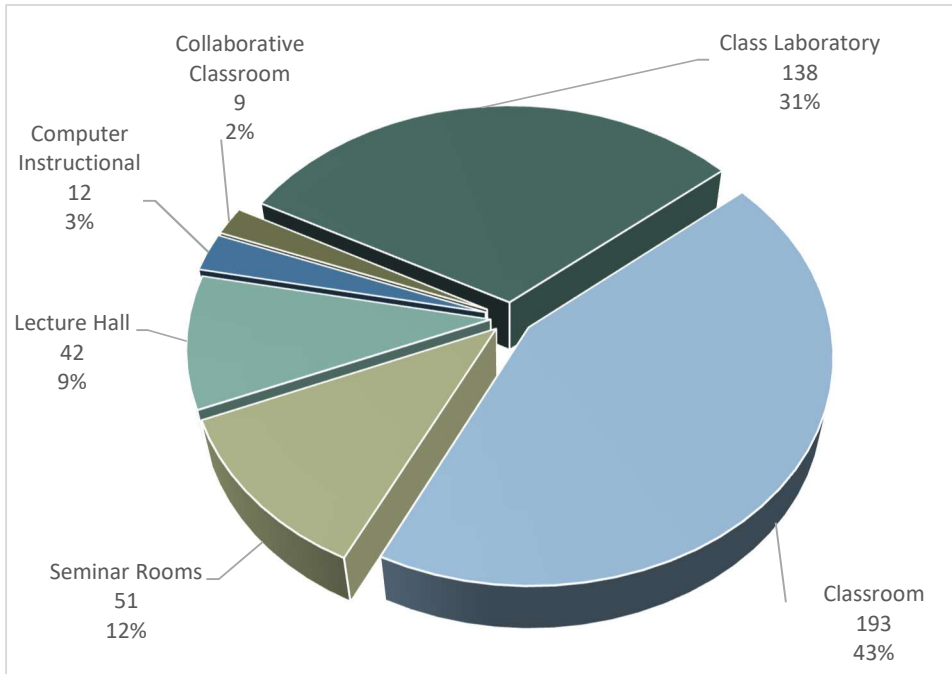
Room Type	Number of Rooms		NASF Occupied		Total WSCH	
	Central Scheduling	Department Scheduling	Central Scheduling	Department Scheduling	Central Scheduling	Department Scheduling
Class Laboratory	3	135	1,750	169,871	1,374	47,565
Classroom	166	27	126,716	32,706	145,688	14,464
Collaborative Classroom	8	1	10,896	3,807	11,809	8,238
Computer Instructional Classroom	0	12	0	11,707	0	3,141
Lecture Hall	34	8	87,298	13,535	161,725	5,602
Seminar Room	34	17	15,499	13,362	14,321	4,552
Subtotal	245	200	242,159	244,988	334,917	83,561
Percent of Total	55%	45%	50%	50%	80%	20%
Combined Totals	445		487,147		418,478*	

* Does not include approximately **68,793** WSCH for courses in non-instructional space, independent studies, evening, weekend, and off-campus courses.

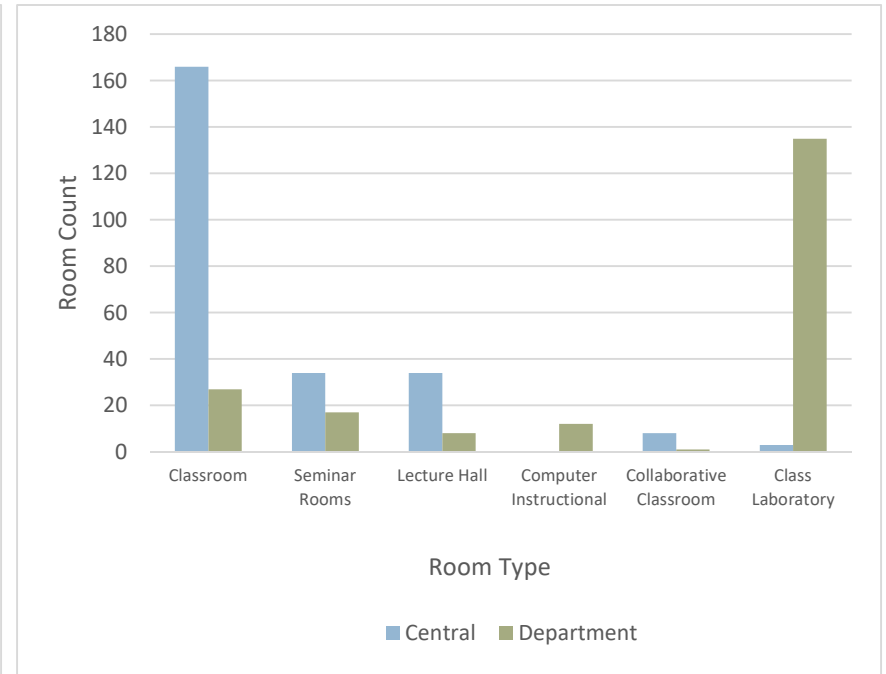
University of Arizona
Instructional Space Utilization Analysis | 2016 Fall Semester

GRAPH OF NUMBER OF INSTRUCTIONAL ROOMS BY ROOM TYPE

ROOM TYPE DISTRIBUTION

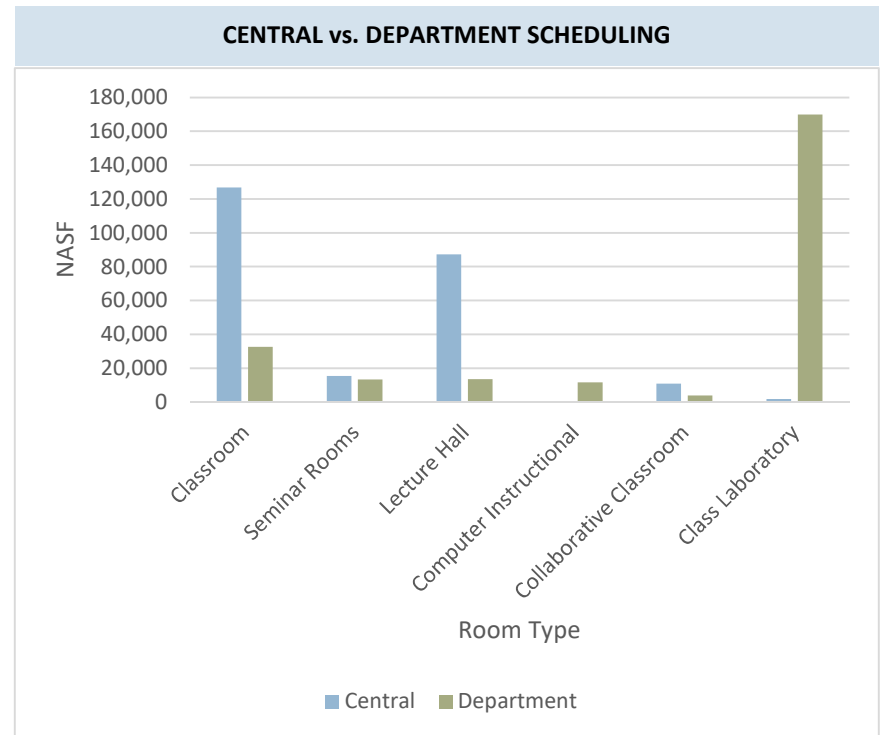
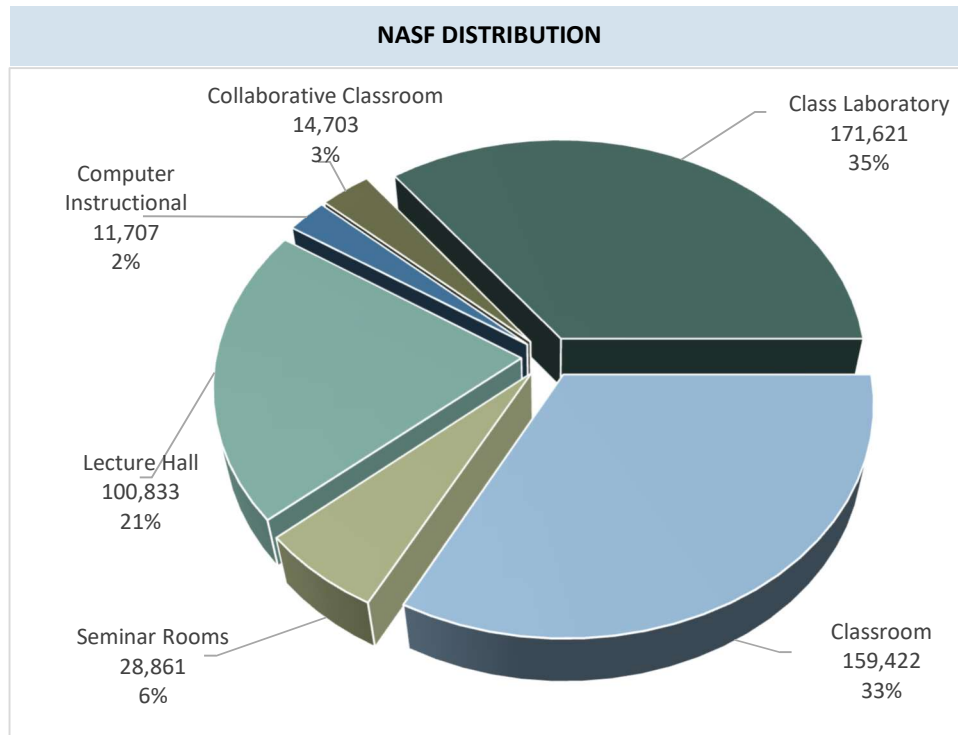


CENTRAL vs. DEPARTMENT SCHEDULING



Room Type	TOTAL COUNT	%	Central Scheduling		Department Scheduling	
			Rooms	%	Rooms	%
Class Laboratory	138	31%	3	2%	135	98%
Classroom	193	43%	166	86%	27	14%
Collaborative Classroom	9	2%	8	89%	1	11%
Computer Instructional Classrooms	12	3%	0	0	12	100%
Lecture Hall	42	9%	34	81%	8	19%
Seminar Room	51	11%	34	67%	17	33%
TOTAL	445	100%	245		200	

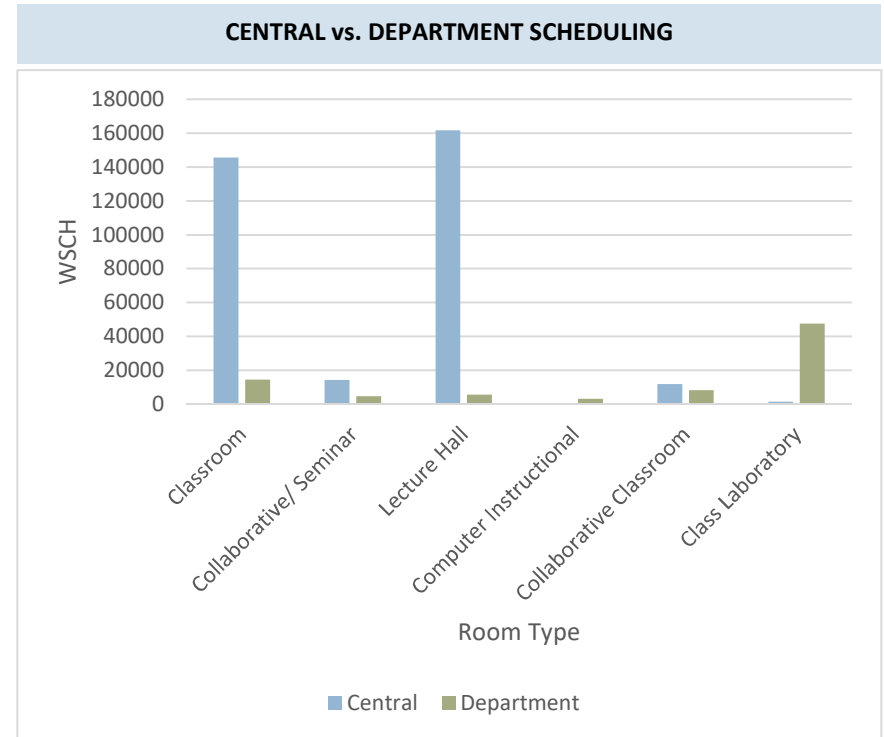
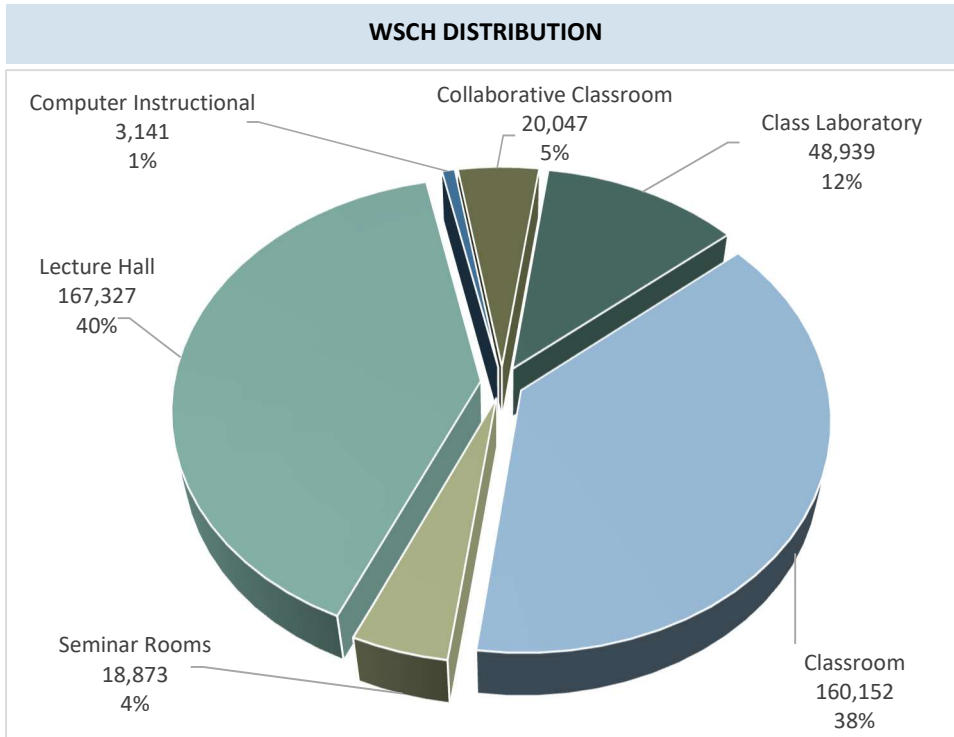
GRAPH OF NET ASSIGNABLE SQUARE FEET (NASF) OF INSTRUCTIONAL ROOMS BY ROOM TYPE



Room Type	TOTAL NASF	%	Central Scheduling		Department Scheduling	
			Rooms	%	Rooms	%
Class Laboratory	171,621	35%	1,750	1%	169,871	99%
Classroom	159,422	33%	126,716	52%	32,706	21%
Collaborative Classroom	14,703	3%	10,896	4%	3,807	26%
Computer Instructional Classrooms	11,707	2%	0	0%	11,707	100%
Lecture Hall	100,833	21%	87,298	36%	13,535	13%
Seminar Room	28,861	6%	15,499	6%	13,362	46%
TOTAL	487,147	100%	242,159		244,988	

University of Arizona
Instructional Space Utilization Analysis | 2016 Fall Semester

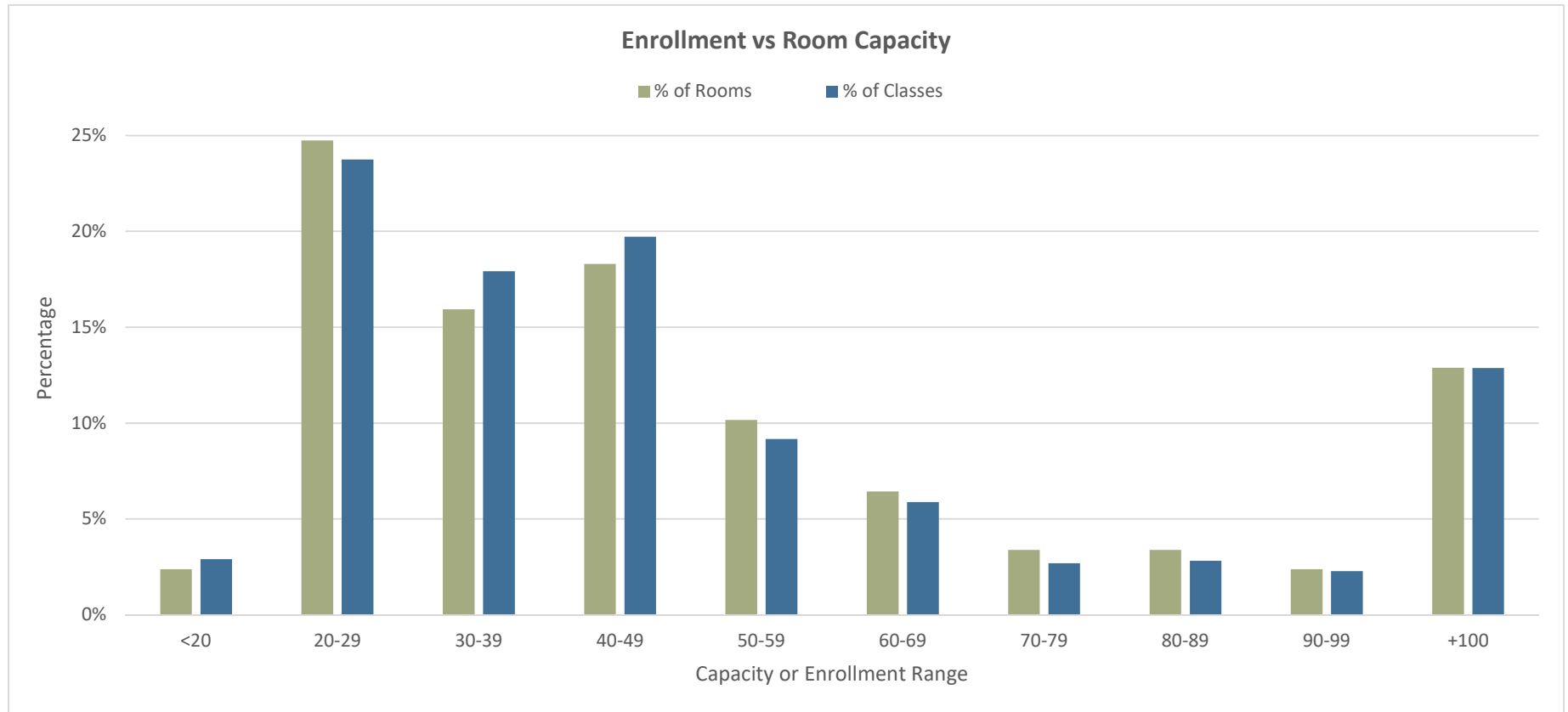
GRAPH OF WEEKLY STUDENT CONTACT HOURS (WSCH) IN INSTRUCTIONAL ROOMS BY ROOM TYPE



Room Type	TOTAL WSCH	%	Central Scheduling		Department Scheduling	
			Rooms	%	Rooms	%
Class Laboratory	48,939	12%	1,374	3%	47,565	97%
Classroom	160,152	38%	145,688	91%	14,464	9%
Collaborative Classroom	20,047	5%	11,809	59%	8,238	41%
Computer Instructional Classrooms	3,141	1%		0%	3,141	100%
Lecture Hall	167,327	40%	161,725	97%	5,602	3%
Seminar Room	18,873	5%	14,321	76%	4,552	24%
TOTAL	418,478	100%	334,917		83,561	

GRAPH OF ENROLLMENT VS. ROOM CAPACITY

- Instructional space for this table only includes classrooms, seminar rooms, collaborative classrooms and lecture halls (not class laboratories or computer instructional rooms)



	Room Capacity										TOTAL
	<20	20-29	30-39	40-49	50-59	60-69	70-79	80-89	90-99	+100	
Count of Rooms	7	73	47	54	30	19	10	10	7	38	295
Count of Scheduled Classes	92	751	567	624	290	186	85	89	72	407	3,163

University of Arizona
Instructional Space Utilization Analysis | 2016 Fall Semester

NUMBER OF CLASSES BY TIME AND DAY TABLE

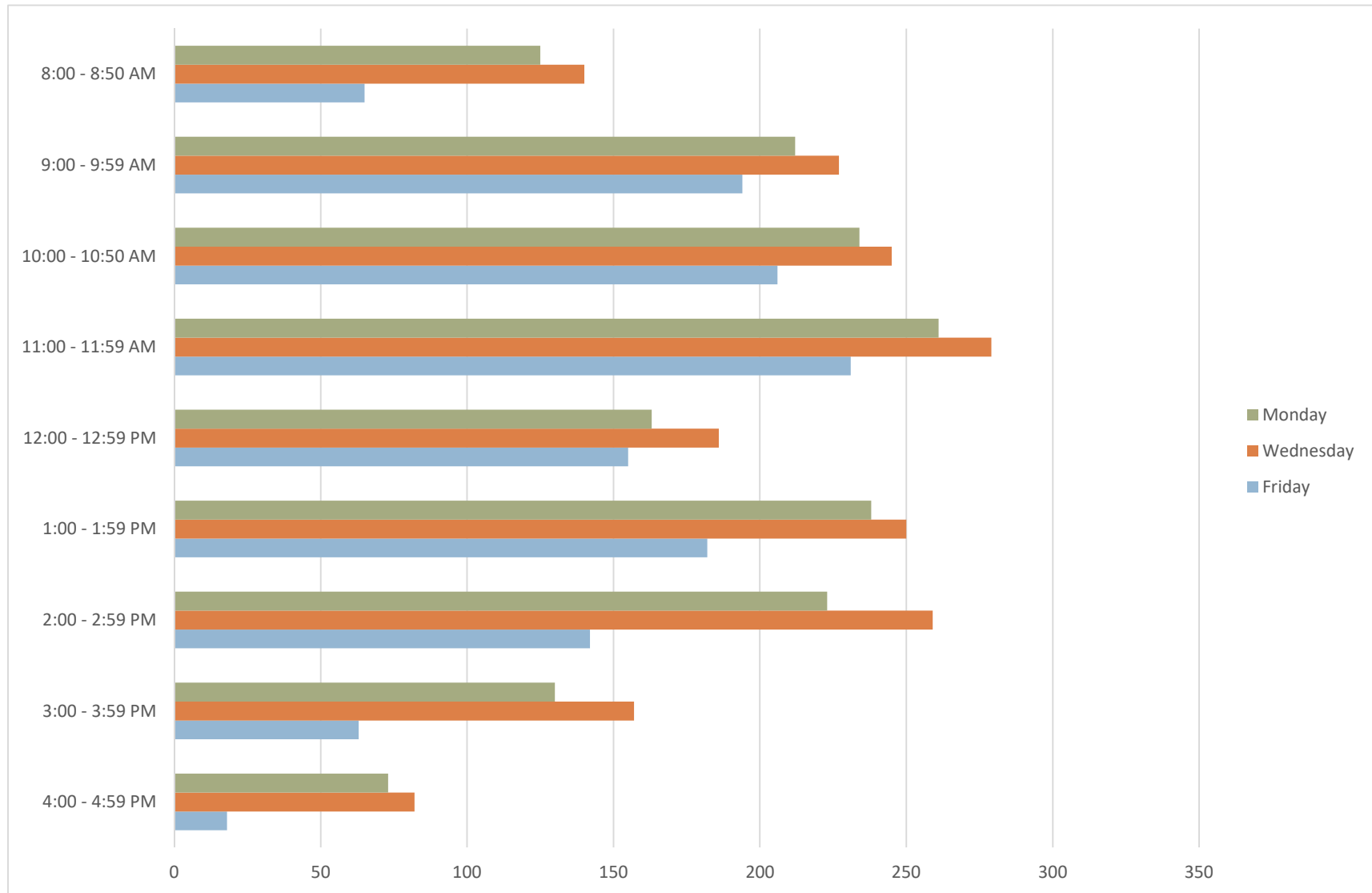
- Classes are counted based upon their start times and the days on which they occur. The number of classes in this table should not be compared against the number of classes offered during the 2016 Fall Semester. Each course is counted as one class in each day and time slot in which it occurs. Therefore, a course that meets Mondays and Wednesdays from 9:00 AM to 11:00 AM would be counted in the table twice.

Start Time	Monday	Tuesday	Wednesday	Thursday	Friday	Total
8:00 - 8:59 AM	125	160	140	162	65	652
9:00 - 9:59 AM	212	90	227	83	194	806
10:00 - 10:59 AM	234	286	245	288	206	1,259
11:00 - 11:59 AM	261	324	279	317	231	1,412
12:00 - 12:59 PM	163	55	186	56	155	615
1:00 - 1:59 PM	238	303	250	299	182	1,272
2:00 - 2:59 PM	223	309	259	316	142	1,249
3:00 - 3:59 PM	130	44	157	44	63	438
4:00 - 4:59 PM	73	129	82	137	18	439
TOTAL CLASSES	1,659	1,700	1,825	1,702	1,256	8,142

University of Arizona
Instructional Space Utilization Analysis | 2016 Fall Semester

NUMBER OF CLASSES BY TIME AND DAY GRAPH – MONDAY, WEDNESDAY AND FRIDAY

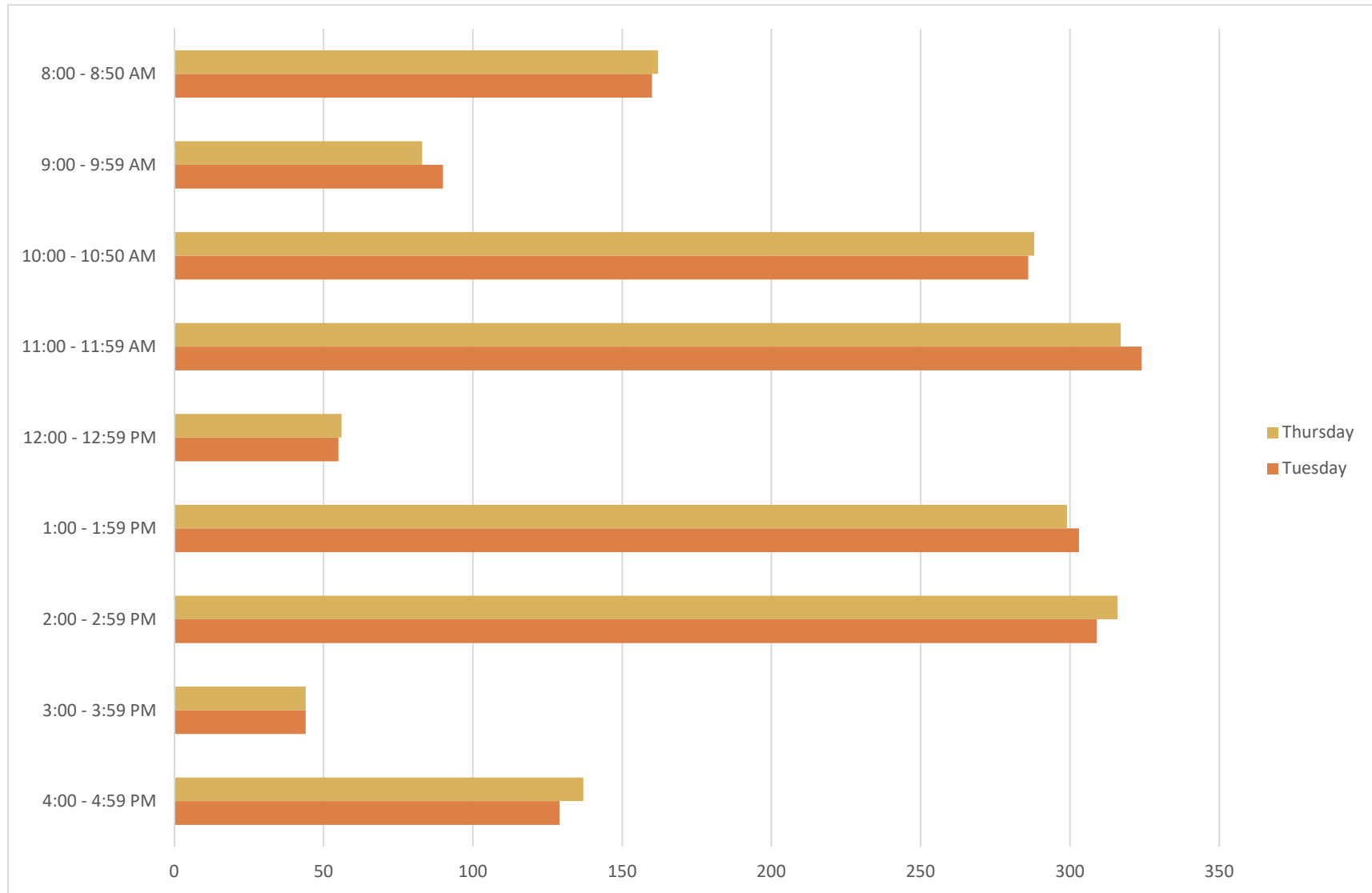
- Based on start times and the days on which classes occur. See preceding table for more complete explanation.



University of Arizona
Instructional Space Utilization Analysis | 2016 Fall Semester

NUMBER OF CLASSES BY TIME AND DAY GRAPH– TUESDAY AND THURSDAY

- Based on start times and the days in which classes occur. See preceding table. Tues/Thurs classes are generally 75 minutes, leaving room unavailable for the next hour.



University of Arizona
Instructional Space Utilization Analysis | 2016 Fall Semester

ENROLLMENT BY TIME AND DAY TABLE

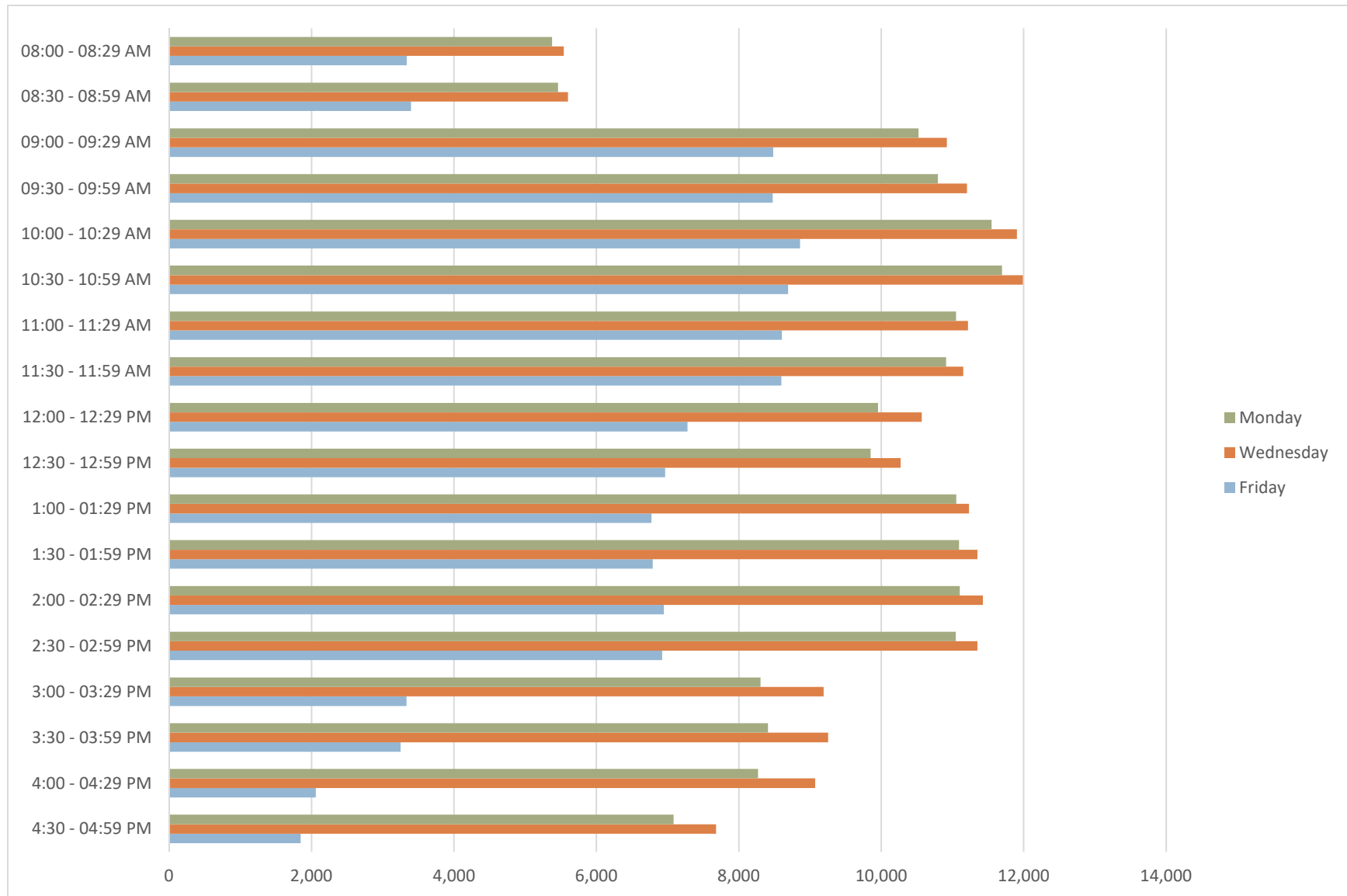
- Data represents the number of students during a particular day and time slot. Each student is counted once for each day and hour during which he or she is in a class. Therefore, a student who attends a class that meets on Mondays and Wednesdays from 9:30 AM to 11:00 AM would be represented in the table six times: Monday during 9:30-9:59 AM, 10:00-10:29 AM, and 10:30-11:00 AM, as well as on Wednesday during the same time slots.

Start Time	Monday	Tuesday	Wednesday	Thursday	Friday	Total
08:00 - 08:29 AM	5,378	7,282	5,541	7,276	3,339	28,816
08:30 - 08:59 AM	5,463	7,400	5,602	7,446	3,398	29,309
09:00 - 09:29 AM	10,522	8,003	10,919	7,961	8,482	45,887
09:30 - 09:59 AM	10,794	13,010	11,202	13,103	8,474	56,583
10:00 - 10:29 AM	11,055	13,327	11,232	13,173	6,774	55,561
10:30 - 10:59 AM	11,092	13,116	11,351	13,049	6,789	55,397
11:00 - 11:29 AM	11,548	13,392	11,904	13,419	8,858	59,121
11:30 - 11:59 AM	11,695	13,250	11,988	13,327	8,693	58,953
12:00 - 12:29 PM	11,050	13,518	11,218	13,439	8,606	57,831
12:30 - 12:59 PM	10,909	13,475	11,152	13,434	8,599	57,569
1:00 - 01:29 PM	9,956	12,191	10,569	12,023	7,278	52,017
1:30 - 01:59 PM	9,851	12,704	10,272	12,448	6,966	52,241
2:00 - 02:29 PM	11,102	13,387	11,428	13,480	6,948	56,345
2:30 - 02:59 PM	11,048	13,363	11,351	13,603	6,922	56,287
3:00 - 03:29 PM	8,306	12,816	9,191	12,625	3,333	46,271
3:30 - 03:59 PM	8,408	9,732	9,254	9,908	3,249	40,551
4:00 - 04:29 PM	8,270	10,039	9,072	10,141	2,061	39,583
4:30 - 04:59 PM	7,085	10,042	7,680	9,555	1,847	36,209

University of Arizona
 Instructional Space Utilization Analysis | 2016 Fall Semester

ENROLLMENT BY TIME AND DAY GRAPH – MONDAY, WEDNESDAY AND FRIDAY

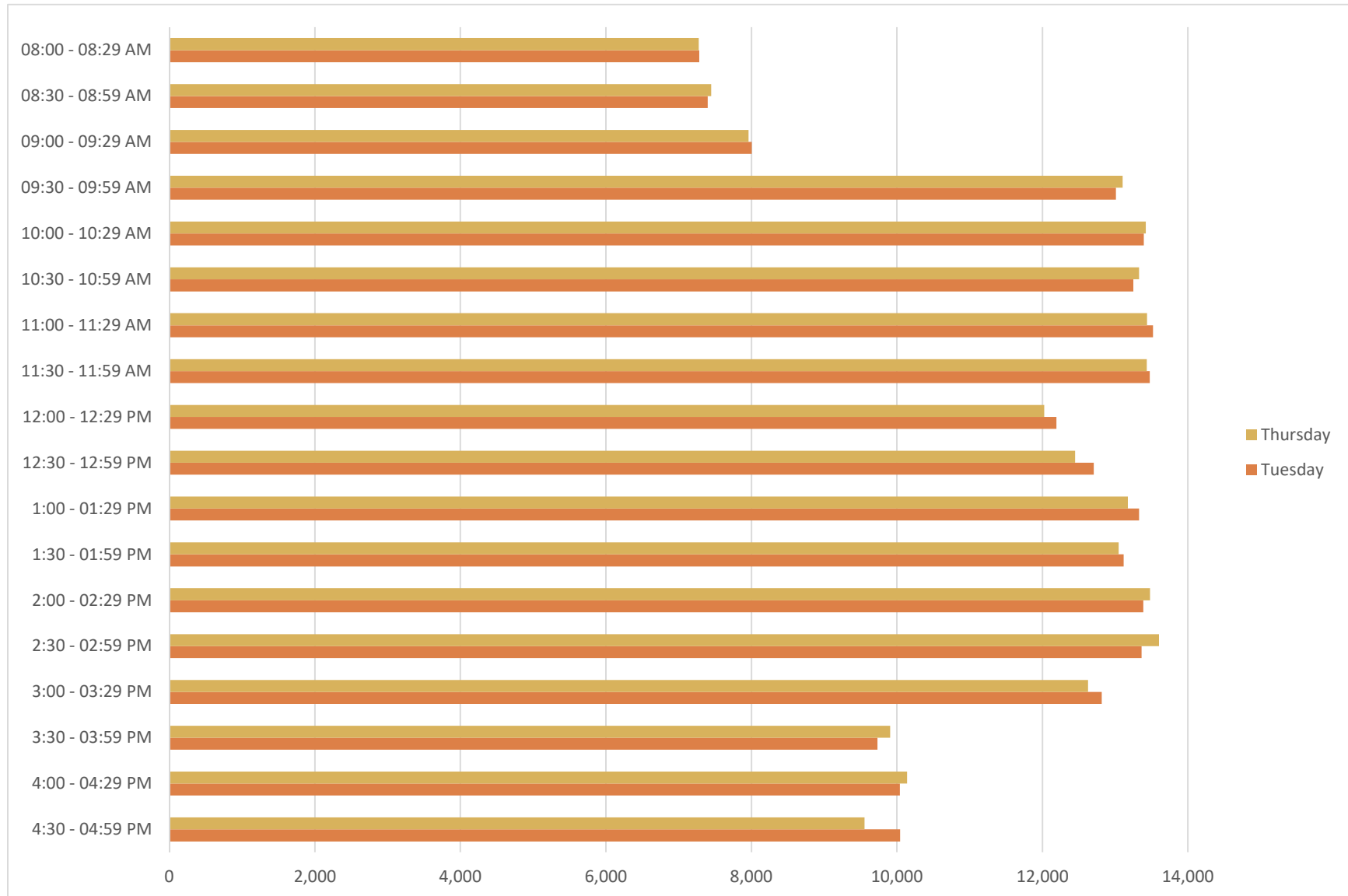
▪ Data represents number of students during a particular day and time slot. See preceding table for more complete explanation.



University of Arizona
 Instructional Space Utilization Analysis | 2016 Fall Semester

ENROLLMENT BY TIME AND DAY GRAPH – TUESDAY AND THURSDAY

▪ Data represents number of students during a particular day and time slot. See preceding table for more complete explanation.



University of Arizona
Instructional Space Utilization Analysis | 2016 Fall Semester

ROOM USE BY BUILDING

Room Use by Building

Bldg./ Room	Room Type	Department	Classes Per Week	Weekly Class Hours	Total Weekly Demand	Number of Student Stations	Number of Stations Occupied	Percent of Stations Occupied	Room NASF	NASF per Student Station	Standard	WSCH
Abrams Building												
0102	Seminar Room	Senior VP Health Sciences	4	32	64	20	16	80%	583	29	22	512
		Subtotal		32	64	20	N/A	N/A	583	N/A	N/A	512
Aerospace And Mechanical Engineering												
N231	Class Laboratory	Aerospace & Mech Eng.	9	23	110	25	12	49%	1,888	76	110	275
S202	Lecture Hall	Institutional Admin	33	40	5,165	235	158	67%	3,232	14	17	6,273
S212	Lecture Hall	Institutional Admin	34	42	2,433	96	70	73%	1,680	18	17	2,899
S324	Classroom	Institutional Admin	12	15	314	55	25	45%	930	17	19	367
S336	Classroom	Institutional Admin	18	23	426	35	24	69%	601	17	19	537
S338	Classroom	Institutional Admin	18	21	635	55	34	61%	966	18	19	711
S402	Class Laboratory	Aerospace & Mech Eng.	1	2	72	25	72	288%	1,137	45	110	108
S420	Class Laboratory	Aerospace & Mech Eng.	1	3	13	20	13	65%	980	49	110	39
S426	Computer Instructional	Aerospace & Mech Eng.	5	15	87	20	17	87%	923	46	32	261
S436	Computer Instructional	Aerospace & Mech Eng.	9	15	153	20	17	85%	823	41	32	261
S438	Computer Instructional	Aerospace & Mech Eng.	14	14	330	33	24	71%	1,245	38	32	330
		Subtotal	154	212	9,738	619	N/A	N/A	14,405	N/A	N/A	12,061
Arizona Health Sciences Center												
3115	Class Laboratory	COM Academic Affairs	1	1	10	60	10	17%	1,282	21	70	10
3117	Lecture Hall	COM Academic Affairs	1	3	42	126	42	33%	1,250	10	17	126
5403	Lecture Hall	Senior VP Health Sciences	1	2	40	128	40	31%	1,248	10	17	80
8403	Lecture Hall	Senior VP Health Sciences	3	5	129	123	38	30%	1,248	10	17	237
		Subtotal	6	11	221	437	N/A	N/A	5,028	N/A	N/A	453
Art Building & Art Museum												
0105	Class Laboratory	School of Art	8	24	148	30	19	62%	1,189	40	70	444
0201	Class Laboratory	School of Art	2	6	24	24	12	50%	1,183	49	70	72
0203	Class Laboratory	School of Art	11	17	180	20	18	92%	793	40	70	226
0205	Class Laboratory	School of Art	6	18	122	25	20	81%	1,203	48	70	366
0301	Class Laboratory	School of Art	8	24	138	20	17	86%	1,196	60	70	414
0307	Class Laboratory	School of Art	6	18	64	20	11	53%	1,990	100	70	192
0310	Class Laboratory	School of Art	4	12	64	20	16	80%	1,975	99	70	192
0312	Class Laboratory	School of Art	9	14	231	53	27	51%	936	18	70	347
0314	Class Laboratory	School of Art	6	18	94	22	16	71%	1,085	49	70	282
0324	Class Laboratory	School of Art	2	6	28	20	14	70%	897	45	70	84
0326	Class Laboratory	School of Art	6	18	88	20	15	73%	1,971	99	70	264
		Subtotal	68	175	1,181	274	N/A	N/A	14,418	N/A	N/A	70

University of Arizona
Instructional Space Utilization Analysis | 2016 Fall Semester

Room Use by Building

Bldg./ Room	Room Type	Department	Classes Per Week	Weekly Class Hours	Total Weekly Demand	Number of Student Stations	Number of Stations Occupied	Percent of Stations Occupied	Room NASF	NASF per Student Station	Standard	WSCH
Art Building Addition												
0119	Class Laboratory	School of Art	6	18	114	24	19	79%	1,041	43	70	342
0140A	Class Laboratory	School of Art	6	18	112	25	19	75%	1,017	41	70	336
0140B	Class Laboratory	School of Art	11	34	193	25	18	71%	916	37	70	600
0243	Class Laboratory	School of Art	21	27	410	20	20	100%	2,727	136	70	512
0245	Seminar Room	School of Art	5	13	38	20	8	38%	674	34	22	98
		Subtotal	49	110	867	114	N/A	N/A	6,375	N/A	N/A	1,888
Biological Sciences East												
0100	Lecture Hall	Institutional Admin	23	26	4,015	271	170	63%	1,834	7	17	4,545
0124	Class Laboratory	Sch of Nat Resource&Enviro-Res	6	11	163	30	30	98%	838	28	43	337
0223	Class Laboratory	Ecology & Evolutionary Biology	4	8	74	36	19	51%	1,003	28	58	148
0225	Classroom	Sch of Nat Resource&Enviro-Res	2	4	52	56	26	46%	1,003	18	19	108
0314	Classroom	Institutional Admin	12	15	232	25	19	77%	504	20	19	291
		Subtotal	47	64	4,536	418	N/A	N/A	5,182	N/A	N/A	5,429
Biological Sciences West												
0208	Classroom	Institutional Admin	13	18	563	71	41	57%	1,080	15	19	736
0210	Classroom	Institutional Admin	36	38	907	40	25	61%	602	15	19	948
0212	Classroom	Institutional Admin	23	25	520	28	22	80%	497	18	19	570
0219	Classroom	Institutional Admin	18	23	589	56	32	58%	814	15	19	749
0237	Classroom	Institutional Admin	26	29	656	46	25	55%	840	18	19	736
0301	Collaborative Classroom	Institutional Admin	28	33	2,559	112	92	82%	2,539	23	19	3,021
		Subtotal	144	165	5,794	353	N/A	N/A	6,372	N/A	N/A	6,759
CAPLA - West												
0103	Lecture Hall	Institutional Admin	28	32	1,552	94	55	59%	1,448	15	17	1,806
0204	Class Laboratory	School of Architecture	5	9	207	50	42	83%	2,875	58	43	372
0302	Class Laboratory	School of Architecture	9	14	628	60	63	105%	3,356	56	58	942
0302A	Classroom	Institutional Admin	34	39	511	33	16	48%	619	19	19	618
		Subtotal	76	94	2,898	237	N/A	N/A	8,298	N/A	N/A	3,738
CCIT												
0319	Computer Instructional	English	20	30	467	28	23	83%	1,267	45	32	701
		Subtotal	20	30	467	28	N/A	N/A	1,267	N/A	N/A	701
Center For English As A Second Language												
0102	Lecture Hall	Institutional Admin	23	30	3,951	237	171	72%	2,500	11	17	5,132
0103	Lecture Hall	Institutional Admin	30	36	5,386	236	179	76%	2,500	11	17	6,657
		Subtotal	53	66	9,337	473	N/A	N/A	5,000	N/A	N/A	11,789

University of Arizona
Instructional Space Utilization Analysis | 2016 Fall Semester

Room Use by Building

Bldg./ Room	Room Type	Department	Classes Per Week	Weekly Class Hours	Total Weekly Demand	Number of Student Stations	Number of Stations Occupied	Percent of Stations Occupied	Room NASF	NASF per Student Station	Standard	WSCH
Chavez Building												
0103	Classroom	Institutional Admin	37	44	1,103	40	30	74%	571	14	19	1,297
0104	Classroom	Institutional Admin	30	39	954	50	32	64%	722	14	19	1,281
0105	Classroom	Institutional Admin	34	39	996	40	29	73%	571	14	19	1,134
0109	Classroom	Institutional Admin	34	39	965	40	28	70%	571	14	19	1,075
0110	Lecture Hall	Institutional Admin	33	39	2,900	142	90	63%	1,691	12	17	3,399
0111	Lecture Hall	Institutional Admin	35	43	3,629	142	103	73%	1,691	12	17	4,458
0301	Classroom	Institutional Admin	29	33	1,763	80	62	77%	1,008	13	19	2,040
0302	Classroom	Institutional Admin	29	29	629	26	20	76%	425	16	19	629
0303	Classroom	Institutional Admin	26	33	568	46	22	47%	640	14	19	710
0304	Classroom	Institutional Admin	29	34	839	42	30	70%	614	15	19	992
0305	Classroom	Institutional Admin	35	35	688	25	19	77%	350	14	19	688
0306	Classroom	Institutional Admin	32	32	724	28	22	77%	425	15	19	724
0307	Collaborative Classroom	Institutional Admin	33	40	720	30	21	70%	720	24	19	882
0308	Classroom	Institutional Admin	32	37	974	40	30	74%	576	14	19	1,086
0316	Classroom	Institutional Admin	30	37	776	42	24	57%	720	17	19	919
0400	Classroom	Institutional Admin	18	24	879	70	51	72%	1,056	15	19	1,212
0405	Classroom	Institutional Admin	15	20	741	72	51	71%	1,008	14	19	1,029
		Subtotal	511	596	19,848	955	N/A	N/A	13,359	N/A	N/A	23,555
Chemistry												
0111	Lecture Hall	Institutional Admin	26	33	4,554	247	172	70%	2,412	10	17	5,766
0126	Classroom	Institutional Admin	31	35	306	35	11	32%	638	18	19	331
0134	Lecture Hall	Institutional Admin	24	29	2,368	142	100	70%	1,537	11	17	2,883
0209	Lecture Hall	Institutional Admin	29	34	1,038	60	36	60%	1,083	18	17	1,261
0327	Class Laboratory	Chemistry & Biochemistry - Sci	1	3	4	6	4	67%	329	55		12
		Subtotal	111	134	8,270	490	N/A	N/A	5,999	N/A	N/A	10,253
Civil Engineering												
0001	Class Laboratory	Civil Eng. and Eng. Mechanics	1	3	16	18	16	89%	557	31	110	48
0116	Class Laboratory	Civil Eng. and Eng. Mechanics	2	6	11	15	6	37%	841	56	110	33
0120	Class Laboratory	Civil Eng. and Eng. Mechanics	1	3	18	16	18	113%	2,646	165	110	54
0201	Classroom	Institutional Admin	23	30	581	43	25	58%	904	21	19	752
0203	Computer Instructional	Civil Eng. and Eng. Mechanics	4	12	80	20	20	100%	659	33	32	240
0318	Class Laboratory	Civil Eng. and Eng. Mechanics	2	6	37	18	19	103%	452	25	110	111
		Subtotal	33	60	743	130	N/A	N/A	6,059	N/A	N/A	1,238
Communication												
0113	Classroom	Institutional Admin	15	19	488	45	32	71%	748	17	19	621
0206	Classroom	Institutional Admin	22	28	764	56	34	60%	800	14	19	956

University of Arizona
Instructional Space Utilization Analysis | 2016 Fall Semester

Room Use by Building

Bldg./ Room	Room Type	Department	Classes Per Week	Weekly Class Hours	Total Weekly Demand	Number of Student Stations	Number of Stations Occupied	Percent of Stations Occupied	Room NASF	NASF per Student Station	Standard	WSCH
Communication (cont.)												
0214	Classroom	Institutional Admin	21	26	673	48	32	67%	742	15	19	841
0311	Classroom	Institutional Admin	27	34	646	42	23	55%	810	19	19	791
		Subtotal	85	107	2,571	191	N/A	N/A	3,100	N/A	N/A	3,209
Drachman Hall												
A112	Classroom	Institutional Admin	11	16	138	30	15	48%	1,160	39	19	200
A114	Classroom	Institutional Admin	16	28	1,698	128	106	83%	2,444	19	19	2,878
A116	Classroom	Institutional Admin	7	13	83	42	12	28%	1,402	33	19	165
A118	Classroom	Institutional Admin	15	25	484	60	32	53%	1,247	21	19	846
A119	Classroom	Institutional Admin	7	16	86	20	12	58%	564	28	19	196
A120	Classroom	Institutional Admin	9	21	337	60	35	59%	1,222	20	19	749
A122	Classroom	Institutional Admin	14	23	266	40	18	44%	1,022	26	19	391
A127	Seminar Room	Institutional Admin	2	3	18	22	9	41%	193	9	22	27
A319	Class Laboratory	Public Health Administration	2	3	36	24	18	75%	476	20		54
B109	Classroom	Institutional Admin	18	22	1,936	128	102	79%	2,391	19	19	2,301
B111	Classroom	Institutional Admin	14	22	1,144	128	84	66%	2,416	19	19	1,793
B209	Class Laboratory	Pharmacy Practice and Science	3	7	75	30	25	83%	955	32		177
		Subtotal	118	198	6,301	712	N/A	N/A	15,492	N/A	N/A	9,777
Drama												
0006	Class Laboratory	Sch Theatre Film & Television	2	3	22	20	11	55%	540	27	125	33
		Subtotal	2	3	22	20	N/A	N/A	540	N/A	N/A	33
Drama Addition												
0007	Class Laboratory	Sch Theatre Film & Television	5	15	53	12	11	88%	1,147	96	125	159
0014	Class Laboratory	School of Art	2	4	24	25	12	48%	608	24	70	48
0020	Class Laboratory	School of Art	10	28	144	25	14	58%	612	24	70	402
0110	Class Laboratory	Sch Theatre Film & Television	5	15	52	20	10	52%	4,229	211	125	156
0114	Class Laboratory	Sch Theatre Film & Television	10	18	160	25	16	64%	1,876	75	125	286
0116	Class Laboratory	Sch Theatre Film & Television	6	12	102	75	17	23%	1,840	25	125	204
0125	Class Laboratory	Sch Theatre Film & Television	15	24	231	30	16	52%	1,872	62	125	346
0266	Class Laboratory	Sch Theatre Film & Television	14	18	310	50	22	44%	1,853	37	125	404
0268	Class Laboratory	Sch Theatre Film & Television	2	3	16	20	8	40%	304	15	125	24
0270	Class Laboratory	Sch Theatre Film & Television	8	11	119	25	15	61%	1,173	47	125	169
		Subtotal	77	148	1,211	307	N/A	N/A	15,514	N/A	N/A	2,198
Education												
0102	Classroom	Education - Dean's Office	3	7	42	50	14	28%	1,161	23	19	92
0211	Lecture Hall	Institutional Admin	25	31	3,020	195	120	62%	5,223	27	17	3,646
0240	Seminar Room	Institutional Admin	34	38	784	30	22	73%	679	23	22	860

University of Arizona
Instructional Space Utilization Analysis | 2016 Fall Semester

Room Use by Building

Bldg./ Room	Room Type	Department	Classes Per Week	Weekly Class Hours	Total Weekly Demand	Number of Student Stations	Number of Stations Occupied	Percent of Stations Occupied	Room NASF	NASF per Student Station	Standard	WSCH
Education (cont.)												
0308	Classroom	Institutional Admin	31	37	681	32	23	70%	825	26	19	805
0310	Classroom	Institutional Admin	11	15	349	49	27	55%	820	17	19	462
0316	Classroom	Institutional Admin	27	27	584	35	24	68%	537	15	19	584
0318	Classroom	Institutional Admin	14	18	444	50	32	63%	817	16	19	557
0320	Classroom	Institutional Admin	36	42	846	35	23	66%	538	15	19	979
0331	Classroom	Institutional Admin	34	40	612	25	17	67%	672	27	19	689
0333	Classroom	Institutional Admin	34	39	1,029	40	30	75%	960	24	19	1,151
0337	Classroom	Institutional Admin	31	31	610	25	19	78%	865	35	19	610
0341	Classroom	Institutional Admin	32	33	662	25	18	73%	725	29	19	678
0349	Classroom	Institutional Admin	23	28	647	46	28	61%	914	20	19	792
0351	Classroom	Institutional Admin	26	30	682	48	26	55%	854	18	19	796
0353	Collaborative Classroom	Institutional Admin	28	33	2,180	90	76	85%	2,120	24	19	2,528
0432	Seminar Room	Institutional Admin	18	23	252	22	14	62%	535	24	22	315
0437	Classroom	Disability Psychoeduc Studies	11	24	234	32	21	66%	993	31	19	496
0441A	Classroom	Institutional Admin	29	29	715	37	24	64%	650	18	19	715
0455	Class Laboratory	Teachg Learning Sociocult Stds	14	24	302	36	22	60%	724	20	38	524
0502	Seminar Room	Institutional Admin	21	27	363	22	18	80%	475	22	22	466
0530	Class Laboratory	Teachg Learning Sociocult Stds	16	21	385	40	23	57%	1,016	25	38	519
0535	Seminar Room	Institutional Admin	30	34	452	22	14	64%	475	22	22	485
		Subtotal	528	629	15,875	986	N/A	N/A	22,578	N/A	N/A	18,748
Electrical And Computer Engineering												
0102	Classroom	Institutional Admin	19	24	559	48	30	62%	732	15	19	706
0107	Classroom	Institutional Admin	17	21	594	48	33	69%	839	17	19	751
0258	Seminar Room	Institutional Admin	23	28	247	20	11	56%	397	20	22	303
0301	Class Laboratory	Electrical and Computer Eng.	11	27	272	25	23	92%	739	30	90	624
0311	Class Laboratory	Electrical and Computer Eng.	4	12	90	16	23	141%	832	52	90	270
0320	Class Laboratory	Electrical and Computer Eng.	4	12	33	16	8	52%	852	53	90	99
0321	Class Laboratory	Electrical and Computer Eng.	3	9	33	20	11	55%	652	33	90	99
		Subtotal	81	133	1,828	193	N/A	N/A	5,043	N/A	N/A	2,852
Eller Dance Theatre												
0110B	Class Laboratory	School of Dance	1	1	22	50	22	44%	3,848	77	125	22
0301	Class Laboratory	School of Dance	23	37	776	70	35	50%	3,678	53	125	1,242
		Subtotal	24	38	798	120	N/A	N/A	7,526	N/A	N/A	1,264
Engineering												
0214	Classroom	Engineering Administration	21	21	828	45	40	89%	1,068	24	19	828
0304	Collaborative Classroom	Institutional Admin	21	26	332	24	15	61%	524	22	19	389

University of Arizona
Instructional Space Utilization Analysis | 2016 Fall Semester

Room Use by Building

Bldg./ Room	Room Type	Department	Classes Per Week	Weekly Class Hours	Total Weekly Demand	Number of Student Stations	Number of Stations Occupied	Percent of Stations Occupied	Room NASF	NASF per Student Station	Standard	WSCH
Engineering (cont.)												
0307	Classroom	Institutional Admin	29	36	767	35	26	74%	527	15	19	927
0308	Classroom	Institutional Admin	30	35	820	40	26	65%	538	13	19	944
0311	Classroom	Institutional Admin	28	34	659	35	23	65%	504	14	19	771
		Subtotal	129	152	3,406	179	N/A	N/A	3,161	N/A	N/A	3,859
ENR2												
N120	Lecture Hall	Institutional Admin	35	40	16,626	575	474	82%	6,514	11	17	18,785
N350	Class Laboratory	Sch of Nat Resource&Enviro-Res	16	21	303	40	18	45%	1,702	43	43	409
S210	Seminar Room	Institute of the Environment	9	14	215	40	21	53%	1,474	37	22	335
S223	Seminar Room	Sch of Geography & Development	20	23	308	20	15	77%	954	48	22	323
S230	Seminar Room	Sch of Geography & Development	16	21	484	60	27	46%	1,865	31	22	671
S495	Class Laboratory	Sch of Geography & Development	5	11	70	21	14	67%	780	37	55	136
S547	Class Laboratory	Sch of Geography & Development	13	21	317	41	25	60%	1,396	34	55	494
		Subtotal	114	151	18,323	797	N/A	N/A	14,685	N/A	N/A	21,153
Esquire Apartments												
0114	Class Laboratory	School of Art	4	12	54	20	14	68%	637	32	70	162
		Subtotal	4	12	54	20	N/A	N/A	637	N/A	N/A	162
Forbes												
0206	Seminar Room	Institutional Admin	20	23	382	25	18	72%	465	19	22	419
0412	Class Laboratory	Entomology-Ins	4	6	56	25	14	56%	682	27	75	84
		Subtotal	24	29	438	50	N/A	N/A	1,147	N/A	N/A	503
Fred Fox School of Music												
0035	Class Laboratory	School of Music	15	18	241	30	15	51%	979	33	53	281
0106	Class Laboratory	School of Music	22	22	333	50	14	28%	1,149	23	53	333
0121	Class Laboratory	School of Music	27	29	379	18	14	77%	772	43	53	407
0146	Classroom	Institutional Admin	25	29	1,523	142	55	39%	1,650	12	19	1,879
0202	Class Laboratory	Institutional Admin	13	17	153	18	12	67%	378	21	38	207
0204	Class Laboratory	Institutional Admin	17	18	207	18	12	66%	400	22	38	217
		Subtotal	119	133	2,836	276	N/A	N/A	5,328	N/A	N/A	3,324
Fred Fox School of Music Addition												
0114	Class Laboratory	School of Music	25	28	411	30	14	47%	1,093	36	53	463
0137	Computer Instructional	Ofc Stdnt Computing Resources	12	16	252	15	17	114%	1,355	90	32	302
0162	Class Laboratory	School of Music	27	27	683	75	22	30%	1,876	25	53	683
0170	Class Laboratory	School of Music	17	27	540	80	29	37%	2,351	29	53	925
0232	Class Laboratory	School of Music	22	22	569	125	21	17%	2,663	21	53	569

University of Arizona
Instructional Space Utilization Analysis | 2016 Fall Semester

Room Use by Building

Bldg./ Room	Room Type	Department	Classes Per Week	Weekly Class Hours	Total Weekly Demand	Number of Student Stations	Number of Stations Occupied	Percent of Stations Occupied	Room NASF	NASF per Student Station	Standard	WSCH
Fred Fox School of Music Addition		Subtotal	103	120	2,455	325	N/A	N/A	9,338	N/A	N/A	2,942
Gittings Building												
0004	Class Laboratory	School of Dance	9	9	221	30	24	80%	3,022	101	125	221
0016	Class Laboratory	School of Dance	18	24	447	30	26	86%	3,017	101	125	532
0036	Class Laboratory	Physiology-Undergraduate Prog	2	3	24	15	12	80%	555	37	70	36
0124	Class Laboratory	School of Dance	26	40	817	70	32	45%	3,665	52	125	1,211
0130	Class Laboratory	School of Dance	14	23	336	60	24	41%	3,930	66	125	532
0201	Classroom	Institutional Admin	9	14	391	65	43	66%	819	13	19	587
0203	Classroom	Institutional Admin	8	10	234	49	29	60%	690	14	19	287
0205	Classroom	Institutional Admin	14	19	343	38	23	62%	655	17	19	458
0207	Classroom	Institutional Admin	15	19	394	38	27	70%	683	18	19	500
		Subtotal	115	159	3,207	395	N/A	N/A	17,036	N/A	N/A	4,363
Gould-Simpson												
0201	Class Laboratory	Geosciences	5	15	91	24	18	76%	712	30	55	273
0203	Class Laboratory	Geosciences	14	22	170	36	13	37%	712	20	55	295
0209	Class Laboratory	Geosciences	12	24	148	32	11	35%	712	22	55	267
0701	Classroom	Institutional Admin	13	17	297	48	23	47%	672	14	19	383
0849	Seminar Room	Mathematics	1	1	11	29	11	38%	668	23	22	11
0906	Class Laboratory	Computer Science	23	35	805	60	36	60%	933	16	50	1,203
0942	Class Laboratory	Computer Science	6	11	123	21	21	98%	319	15	50	226
		Subtotal	74	125	1,645	250	N/A	N/A	4,728	N/A	N/A	2,658
Harshbarger Building												
0206	Classroom	Institutional Admin	13	16	479	58	38	66%	961	17	19	585
0208	Class Laboratory	Hydrology and Water Resources	4	9	69	30	19	62%	837	28	43	168
0332	Classroom	Materials Science & Eng.	3	5	17	28	6	20%	515	18	19	28
		Subtotal	20	30	565	116	N/A	N/A	2,313	N/A	N/A	781
Harvill Building												
0101	Classroom	Institutional Admin	27	31	1,189	60	45	75%	987	16	19	1,366
0102	Classroom	Institutional Admin	26	32	961	56	39	69%	1,112	20	19	1,166
0103	Classroom	Institutional Admin	35	35	542	24	16	67%	448	19	19	542
0104	Class Laboratory	Sch Theatre Film & Television	6	14	106	30	19	63%	777	26	125	253
0105	Seminar Room	Institutional Admin	22	27	422	24	19	80%	463	19	22	516
0107	Seminar Room	Institutional Admin	35	41	555	30	16	52%	538	18	22	648
0111	Seminar Room	Institutional Admin	11	16	119	24	12	49%	460	19	22	143
0115	Classroom	Institutional Admin	26	29	858	52	32	61%	1,475	28	19	942
0130	Seminar Room	Institutional Admin	37	37	859	28	22	80%	758	27	22	859
0134	Seminar Room	Institutional Admin	18	22	289	24	16	65%	508	21	22	353

University of Arizona
Instructional Space Utilization Analysis | 2016 Fall Semester

Room Use by Building

Bldg./ Room	Room Type	Department	Classes Per Week	Weekly Class Hours	Total Weekly Demand	Number of Student Stations	Number of Stations Occupied	Percent of Stations Occupied	Room NASF	NASF per Student Station	Standard	WSCH
Harvill Building (cont.)												
0140	Seminar Room	Institutional Admin	29	33	430	30	17	56%	508	17	22	510
0150	Lecture Hall	Institutional Admin	22	28	5,974	398	261	66%	4,415	11	17	7,380
0204	Classroom	Institutional Admin	18	24	1,171	80	65	81%	1,479	18	19	1,551
0208	Classroom	Institutional Admin	39	39	1,255	40	32	81%	698	17	19	1,255
0210	Class Laboratory	Institutional Admin	24	30	806	50	29	58%	972	19	38	950
0232	Seminar Room	Institutional Admin	23	28	482	26	21	81%	487	19	22	601
0234	Classroom	Institutional Admin	26	26	578	32	23	72%	508	16	19	578
0240	Seminar Room	Institutional Admin	21	25	284	30	14	48%	508	17	22	335
0301	Seminar Room	Institutional Admin	20	25	172	18	9	53%	346	19	22	237
0302	Classroom	Institutional Admin	19	24	1,148	80	62	78%	1,453	18	19	1,443
0303	Seminar Room	Institutional Admin	20	24	258	20	13	67%	378	19	22	299
0305	Lecture Hall	Institutional Admin	24	30	2,184	118	91	77%	1,360	12	17	2,717
0313	Classroom	Institutional Admin	37	37	1,148	40	29	73%	702	18	19	1,148
0315	Seminar Room	Institutional Admin	10	13	160	24	16	65%	449	19	22	206
0316	Classroom	Institutional Admin	27	32	695	42	26	61%	708	17	19	815
0318	Classroom	Institutional Admin	17	21	712	60	43	71%	967	16	19	888
0319	Classroom	Institutional Admin	25	30	563	40	23	56%	654	16	19	654
0332B	Classroom	Institutional Admin	32	39	886	40	26	66%	628	16	19	1,037
0332C	Classroom	Institutional Admin	35	35	738	35	22	62%	547	16	19	738
0401	Computer Instructional	School of Information	8	16	176	25	22	88%	1,177	47	32	352
0402	Class Laboratory	School of Information	2	2	29	30	15	48%	834	28	50	29
0404	Collaborative Classroom	Institutional Admin	21	29	1,173	70	52	75%	1,200	17	19	1,531
0411	Classroom	Institutional Admin	27	34	628	38	22	58%	664	17	19	776
0413	Seminar Room	Institutional Admin	12	16	224	24	18	73%	436	18	22	303
0415	Classroom	Institutional Admin	21	26	820	58	39	67%	988	17	19	1,016
0428	Classroom	Institutional Admin	20	26	591	42	30	71%	871	21	19	763
0452	Seminar Room	Institutional Admin	25	31	517	30	20	68%	427	14	22	627
		Subtotal	847	1,005	29,702	1872	N/A	N/A	31,890	N/A	N/A	35,526
Haury Anthropology Building												
0129	Lecture Hall	Institutional Admin	22	26	1,482	83	68	82%	1,333	16	17	1,718
0215	Class Laboratory	School of Anthropology	11	16	218	35	23	66%	896	26	55	235
0216	Classroom	Institutional Admin	16	20	915	78	58	74%	1,189	15	19	1,152
0219	Seminar Room	Institutional Admin	8	12	153	24	18	77%	433	18	22	226
0310	Seminar Room	School of Anthropology	4	10	37	12	9	77%	266	22	22	92
		Subtotal	61	84	2,805	232	N/A	N/A	4,117	N/A	N/A	3,423

University of Arizona
Instructional Space Utilization Analysis | 2016 Fall Semester

Room Use by Building

Bldg./ Room	Room Type	Department	Classes Per Week	Weekly Class Hours	Total Weekly Demand	Number of Student Stations	Number of Stations Occupied	Percent of Stations Occupied	Room NASF	NASF per Student Station	Standard	WSCH
Koffler Building												
0102	Class Laboratory	Animal&Biomedical Sciences-Res	8	24	192	27	24	89%	1,224	45	75	576
0108	Class Laboratory	Animal&Biomedical Sciences-Res	4	12	72	24	18	75%	1,191	50	75	216
0111	Class Laboratory	Chemistry & Biochemistry - Sci	6	24	38	8	6	79%	983	123	68	152
0112	Class Laboratory	Physiology-Undergraduate Prog	7	16	210	24	30	125%	1,191	50	70	487
0114	Class Laboratory	Animal&Biomedical Sciences-Res	8	24	266	24	33	139%	1,224	51	75	798
0204	Lecture Hall	Institutional Admin	24	29	5,940	304	237	78%	2,916	10	17	7,177
0216	Lecture Hall	Institutional Admin	21	25	1,412	89	67	75%	1,140	13	17	1,716
0218	Lecture Hall	Institutional Admin	19	23	1,928	142	89	63%	1,517	11	17	2,409
0320	Class Laboratory	Chemistry & Biochemistry - Sci	6	18	77	16	13	80%	1,328	83	68	224
0321	Class Laboratory	Chemistry & Biochemistry - Sci	9	24	209	24	23	97%	1,328	55	68	557
0330	Class Laboratory	Chemistry & Biochemistry - Sci	6	16	138	24	23	96%	1,328	55	68	368
0331	Class Laboratory	Chemistry & Biochemistry - Sci	9	23	198	24	22	92%	1,328	55	68	501
0350	Class Laboratory	Chemistry & Biochemistry - Sci	7	18	163	24	23	97%	1,328	55	68	420
0351	Class Laboratory	Chemistry & Biochemistry - Sci	9	24	212	24	24	98%	1,328	55	68	565
0360	Class Laboratory	Chemistry & Biochemistry - Sci	3	11	14	16	5	31%	1,328	83	68	50
0361	Class Laboratory	Chemistry & Biochemistry - Sci	9	24	213	24	24	99%	1,328	55	68	568
0410	Class Laboratory	Ecology & Evolutionary Biology	7	21	90	30	13	43%	1,221	41	58	270
0411	Class Laboratory	Ecology & Evolutionary Biology	2	4	11	24	6	23%	1,221	51	58	22
0420	Class Laboratory	Molecular and Cellular Biology	12	36	288	26	24	92%	1,143	44	58	864
0421	Class Laboratory	Chemistry & Biochemistry - Sci	12	32	270	6	23	375%	1,328	221	68	720
0430	Class Laboratory	Molecular and Cellular Biology	12	36	290	26	24	93%	1,143	44	58	870
0431	Class Laboratory	Chemistry & Biochemistry - Sci	11	30	245	24	22	93%	1,328	55	68	665
0440	Class Laboratory	Ecology & Evolutionary Biology	8	24	184	24	23	96%	1,221	51	58	552
0441	Class Laboratory	Ecology & Evolutionary Biology	8	24	189	24	24	98%	1,221	51	58	567
0450	Class Laboratory	Molecular and Cellular Biology	11	33	260	26	24	91%	1,143	44	58	780
0451	Class Laboratory	Chemistry & Biochemistry - Sci	11	29	257	24	23	97%	1,328	55	68	679
0460	Class Laboratory	Molecular and Cellular Biology	8	24	186	26	23	89%	1,143	44	58	558
0461	Class Laboratory	Chemistry & Biochemistry - Sci	11	29	259	24	24	98%	1,328	55	68	682
0510	Class Laboratory	Ecology & Evolutionary Biology	11	27	301	24	27	114%	1,221	51	58	761
0511	Class Laboratory	Ecology & Evolutionary Biology	10	30	123	24	11	44%	1,221	51	58	369
0520	Class Laboratory	Chemistry & Biochemistry - Sci	4	12	44	20	11	55%	1,328	66	68	132
0521	Class Laboratory	Chemistry & Biochemistry - Sci	9	24	207	24	23	96%	1,328	55	68	550
0530	Class Laboratory	Chemistry & Biochemistry - Sci	7	19	160	20	23	114%	1,328	66	68	432
0531	Class Laboratory	Chemistry & Biochemistry - Sci	7	18	148	24	21	88%	1,328	55	68	379
0540	Class Laboratory	Chemistry & Biochemistry - Sci	8	16	124	24	16	65%	1,221	51	68	248
0550	Class Laboratory	Chemistry & Biochemistry - Sci	6	24	34	15	6	38%	1,143	76	68	136
0551	Class Laboratory	Chemistry & Biochemistry - Sci	9	24	193	24	21	89%	1,328	55	68	516
0560	Class Laboratory	Physiology-Undergraduate Prog	12	32	376	24	31	131%	1,328	55	70	1,004
0561	Class Laboratory	Chemistry & Biochemistry - Sci	8	21	185	24	23	96%	1,328	55	68	484

University of Arizona
Instructional Space Utilization Analysis | 2016 Fall Semester

Room Use by Building

Bldg./ Room	Room Type	Department	Classes Per Week	Weekly Class Hours	Total Weekly Demand	Number of Student Stations	Number of Stations Occupied	Percent of Stations Occupied	Room NASF	NASF per Student Station	Standard	WSCH
Koffler Building			359	904	15,706	1349	N/A	N/A	50,880	N/A	N/A	29,024
Kuiper Space Sciences Addition												
0308	Lecture Hall	Lunar and Planetary Laboratory	14	18	935	162	64	40%	2,563	16	17	1,238
0312	Classroom	Lunar and Planetary Laboratory	12	18	102	42	10	23%	820	20	19	158
Subtotal			26	36	1,037	204	N/A	N/A	3,383	N/A	N/A	1,395
Levy Cancer Center												
2919	Classroom	Cancer Center Division	2	4	22	25	11	44%	546	22	19	44
Subtotal			2	4	22	25	N/A	N/A	546	N/A	N/A	44
Marley												
0217	Class Laboratory	CALS Career & Acad Svcs	3	6	64	16	25	156%	1,235	77	60	150
0218	Class Laboratory	CALS Career & Acad Svcs	4	10	72	33	18	55%	910	28	60	179
0230	Lecture Hall	CALS Career & Acad Svcs	15	23	544	82	32	39%	1,607	20	17	901
Subtotal			22	39	680	131	N/A	N/A	3,752	N/A	N/A	1,230
Mathematics												
0102	Computer Instructional	Mathematics	1	1	4	30	4	13%	790	26	32	4
0501	Seminar Room	Mathematics	19	22	333	50	16	32%	943	19	22	374
Subtotal			20	23	337	80	N/A	N/A	1,733	N/A	N/A	378
Mathematics Teaching Laboratory												
0120	Classroom	Mathematics	18	25	332	25	18	74%	1,006	40	19	450
0121	Classroom	Mathematics	1	1	8	25	8	32%	741	30	19	8
0123	Classroom	Mathematics	1	2	2	25	2	8%	585	23	19	4
0124	Classroom	Mathematics	22	27	272	31	13	42%	908	29	19	327
Subtotal			42	55	614	106	N/A	N/A	3,240	N/A	N/A	789
McClelland Hall												
0113	Classroom	Eller Administration	5	13	232	30	46	155%	651	22	19	604
0118	Classroom	Institutional Admin	23	34	528	34	23	67%	557	16	19	775
0120	Class Laboratory	Eller Administration	16	27	529	24	36	148%	1,110	46	35	931
0122	Seminar Room	Institutional Admin	21	32	386	30	18	60%	551	18	22	588
0123	Classroom	Institutional Admin	22	34	1,088	75	50	67%	1,116	15	19	1,662
0125	Classroom	Institutional Admin	19	29	799	58	41	70%	1,193	21	19	1,207
0126	Seminar Room	Institutional Admin	26	36	551	30	22	72%	670	22	22	758
0127	Classroom	Institutional Admin	20	33	885	54	45	82%	1,110	21	19	1,464

University of Arizona
Instructional Space Utilization Analysis | 2016 Fall Semester

Room Use by Building

Bldg./ Room	Room Type	Department	Classes Per Week	Weekly Class Hours	Total Weekly Demand	Number of Student Stations	Number of Stations Occupied	Percent of Stations Occupied	Room NASF	NASF per Student Station	Standard	WSCH
McClelland Hall (cont.)												
0128	Classroom	Institutional Admin	24	36	879	54	37	69%	1,110	21	19	1,288
0129	Classroom	Institutional Admin	22	32	854	54	40	73%	1,110	21	19	1,233
0130	Classroom	Institutional Admin	19	30	561	39	28	73%	841	22	19	888
0131	Classroom	Institutional Admin	22	33	618	39	28	72%	841	22	19	927
0132	Classroom	Institutional Admin	22	35	660	40	29	73%	841	21	19	1,028
0133	Classroom	Institutional Admin	22	33	1,018	63	46	73%	1,155	18	19	1,527
0134	Classroom	Institutional Admin	22	33	980	61	45	73%	1,155	19	19	1,470
0201B	Seminar Room	Eller Undergraduate Programs	15	15	626	40	42	104%	792	20	22	626
0207	Lecture Hall	Institutional Admin	24	36	4,938	230	206	89%	3,096	13	17	7,407
		Subtotal	344	520	16,132	955	N/A	N/A	17,899	N/A	N/A	24,383
McClelland Park												
0101	Classroom	Sch of Family & Consum Sci-Ins	16	22	579	64	36	56%	1,494	23	19	799
0103	Classroom	Sch of Family & Consum Sci-Ins	22	29	1,385	80	60	75%	2,090	26	19	1,848
0105	Classroom	Sch of Family & Consum Sci-Ins	29	35	3,117	150	110	73%	3,257	22	19	3,817
		Subtotal	67	86	5,081	294	N/A	N/A	6,841	N/A	N/A	6,464
Meinel Optical Sciences												
0410	Lecture Hall	Institutional Admin	29	38	2,489	77	84	109%	1,014	13	17	3,164
		Subtotal	29	38	2,489	77	N/A	N/A	1,014	N/A	N/A	3,164
Meinel Optical Sciences Addition												
0422	Classroom	Institutional Admin	20	27	400	33	19	59%	684	21	19	525
0432	Classroom	Institutional Admin	24	28	399	32	16	50%	472	15	19	437
0438	Class Laboratory	College of Optical Sciences	5	15	25	10	5	50%	499	50	68	75
0450	Class Laboratory	College of Optical Sciences	4	12	24	6	6	100%	480	80	68	72
0454	Class Laboratory	College of Optical Sciences	3	10	17	6	6	94%	480	80	68	56
		Subtotal	56	92	865	87	N/A	N/A	2,615	N/A	N/A	1,165
Meinel Optical Sciences West Bldg Expansion												
0305	Classroom	College of Optical Sciences	23	32	367	40	14	35%	853	21	19	485
0307	Lecture Hall	College of Optical Sciences	23	34	726	91	31	34%	1,006	11	17	1,074
		Subtotal	46	66	1,093	131	N/A	N/A	1,859	N/A	N/A	1,559
Mines And Metallurgy												
0015	Class Laboratory	Materials Science & Eng.	4	8	53	30	13	44%	770	26	100	106
0213	Seminar Room	Institutional Admin	23	28	420	30	18	61%	491	16	22	502
0221	Seminar Room	Institutional Admin	21	23	413	26	21	79%	529	20	22	448
0225	Classroom	Mining & Geological Eng.	21	29	372	46	18	38%	890	19	19	501
		Subtotal	69	88	1,258	132	N/A	N/A	2,680	N/A	N/A	1,557

University of Arizona
Instructional Space Utilization Analysis | 2016 Fall Semester

Room Use by Building

Bldg./ Room	Room Type	Department	Classes Per Week	Weekly Class Hours	Total Weekly Demand	Number of Student Stations	Number of Stations Occupied	Percent of Stations Occupied	Room NASF	NASF per Student Station	Standard	WSCH
Modern Languages												
0201	Classroom	Institutional Admin	37	44	771	25	21	83%	392	16	19	922
0202	Classroom	Institutional Admin	32	39	762	40	24	60%	585	15	19	930
0203	Classroom	Institutional Admin	27	31	566	25	22	87%	392	16	19	638
0204	Classroom	Institutional Admin	26	38	491	25	21	83%	392	16	19	687
0205	Classroom	Institutional Admin	35	42	814	37	23	62%	587	16	19	957
0210	Classroom	Institutional Admin	21	28	800	54	39	73%	691	13	19	1,042
0212	Classroom	Institutional Admin	35	41	731	33	21	64%	532	16	19	858
0213	Seminar Room	Institutional Admin	23	30	352	20	13	66%	376	19	22	392
0214	Classroom	Institutional Admin	36	42	830	33	23	70%	532	16	19	966
0301	Classroom	Institutional Admin	30	30	588	25	20	78%	392	16	19	588
0302	Classroom	Institutional Admin	42	42	1,030	25	24	96%	392	16	19	1,030
0303	Classroom	Institutional Admin	36	42	881	42	24	58%	593	14	19	1,026
0304	Classroom	Institutional Admin	30	36	752	42	25	60%	593	14	19	912
0306	Classroom	Institutional Admin	33	33	717	25	21	84%	392	16	19	717
0310	Classroom	Institutional Admin	12	17	554	69	46	67%	834	12	19	801
0311	Lecture Hall	Institutional Admin	37	43	3,062	100	83	83%	1,404	14	17	3,600
0312	Classroom	Institutional Admin	34	41	913	40	27	66%	532	13	19	1,086
0313	Seminar Room	Institutional Admin	25	29	242	12	10	82%	274	23	22	266
0314	Classroom	Institutional Admin	33	39	839	40	25	63%	532	13	19	990
0350	Lecture Hall	Institutional Admin	17	21	3,888	318	230	72%	4,660	15	17	4,952
0401	Classroom	Institutional Admin	33	33	673	25	20	82%	392	16	19	673
0402	Classroom	Institutional Admin	42	42	891	25	19	75%	392	16	19	891
0403	Classroom	Institutional Admin	35	35	779	25	23	93%	392	16	19	779
0404	Classroom	Institutional Admin	34	36	754	25	24	95%	392	16	19	807
0405	Classroom	Institutional Admin	35	35	853	25	24	95%	392	16	19	853
0406	Classroom	Institutional Admin	40	40	974	25	25	100%	396	16	19	974
0410	Classroom	Institutional Admin	17	21	653	55	36	66%	846	15	19	779
0411	Classroom	Institutional Admin	27	33	693	47	26	55%	845	18	19	867
0412	Computer Instructional	Humanities Administration	3	3	63	24	21	88%	1,092	46	32	63
0413	Classroom	Institutional Admin	21	27	827	60	38	64%	846	14	19	1,035
0502	Classroom	Institutional Admin	39	39	928	25	23	94%	392	16	19	928
0503	Classroom	Institutional Admin	32	32	713	25	23	90%	392	16	19	713
0504	Classroom	Institutional Admin	36	36	842	25	24	97%	392	16	19	842
0505	Classroom	Institutional Admin	38	38	863	25	23	91%	392	16	19	863
0506	Classroom	Institutional Admin	39	39	926	25	22	90%	396	16	19	926
0510	Computer Instructional	Humanities Administration	2	6	35	48	18	36%	846	18	32	105
Subtotal			1074	1,203	31,050	1539	N/A	N/A	23,872	N/A	N/A	35,458

University of Arizona
Instructional Space Utilization Analysis | 2016 Fall Semester

Room Use by Building

Bldg./ Room	Room Type	Department	Classes Per Week	Weekly Class Hours	Total Weekly Demand	Number of Student Stations	Number of Stations Occupied	Percent of Stations Occupied	Room NASF	NASF per Student Station	Standard	WSCH
Nursing												
0105	Classroom	College of Nursing	2	7	104	72	52	72%	1,364	19	19	364
0117	Classroom	College of Nursing	1	3	162	85	162	191%	3,996	47	19	486
0122	Classroom	College of Nursing	4	6	172	57	43	75%	924	16	19	280
0470	Classroom	College of Nursing	5	15	214	60	43	71%	1,658	28	19	726
Nursing Total			12	31	652	274	N/A	N/A	7,942	N/A	N/A	1,856
Pacheco Integrated Learning Center												
0117	Classroom	Institutional Admin	34	40	714	28	20	72%	556	20	19	825
0119	Classroom	Institutional Admin	19	24	904	60	47	78%	1,349	22	19	1,115
0120	Lecture Hall	Institutional Admin	26	33	6,201	300	235	78%	3,764	13	17	7,866
0125	Classroom	Institutional Admin	4	5	177	60	47	78%	1,354	23	19	213
0129	Classroom	Institutional Admin	35	42	723	28	19	70%	539	19	19	842
0130	Lecture Hall	Institutional Admin	32	40	3,439	150	109	72%	2,245	15	17	4,441
0133	Classroom	Institutional Admin	32	38	698	28	22	77%	532	19	19	827
0135	Classroom	Institutional Admin	34	39	778	28	22	79%	539	19	19	877
0137	Collaborative Classroom	Institutional Admin	27	34	1,127	60	43	72%	1,354	23	19	1,493
0140	Lecture Hall	Enrollment Management	3	3	16	150	5	4%	2,773	18	17	16
0141	Collaborative Classroom	Institutional Admin	20	25	778	60	36	61%	1,340	22	19	934
0145	Classroom	Institutional Admin	34	40	683	28	19	68%	556	20	19	777
0150	Lecture Hall	Institutional Admin	36	41	4,193	150	114	76%	2,776	19	17	4,724
0151	Classroom	Institutional Admin	31	38	689	28	22	78%	569	20	19	832
Subtotal			367	442	21,120	1158	N/A	N/A	20,246	N/A	N/A	25,782
Pharmacy												
0325	Lecture Hall	Pharmacy Administration	14	23	1,101	176	79	45%	1,840	10	17	1,930
Subtotal			14	23	1,101	176	N/A	N/A	1,840	N/A	N/A	1,930
Physics-Atmospheric Sciences												
0170C	Computer Instructional	Physics	16	16	372	18	23	129%	689	38	32	372
0201	Lecture Hall	Institutional Admin	26	31	6,791	375	252	67%	3,686	10	17	7,903
0208	Class Laboratory	Physics	2	6	33	24	17	69%	554	23	68	99
0212	Class Laboratory	Physics	6	17	118	26	20	76%	681	26	68	334
0216	Class Laboratory	Physics	11	32	240	26	22	84%	634	24	68	697
0220	Classroom	Institutional Admin	24	30	770	54	28	52%	842	16	19	884
0224	Classroom	Institutional Admin	21	25	625	54	29	54%	842	16	19	720
0272	Class Laboratory	Physics	2	3	42	21	21	100%	604	29	68	63
0304	Classroom	Institutional Admin	24	29	584	42	23	55%	533	13	19	690
0312	Classroom	Institutional Admin	39	39	1,202	42	31	74%	533	13	19	1,202
0314	Classroom	Institutional Admin	37	37	1,045	35	28	80%	450	13	19	1,045
0316	Seminar Room	Institutional Admin	19	23	156	16	9	58%	295	18	22	190

University of Arizona
Instructional Space Utilization Analysis | 2016 Fall Semester

Room Use by Building

Bldg./ Room	Room Type	Department	Classes Per Week	Weekly Class Hours	Total Weekly Demand	Number of Student Stations	Number of Stations Occupied	Percent of Stations Occupied	Room NASF	NASF per Student Station	Standard	WSCH
Physics-Atmospheric Sciences (cont.)												
0318	Classroom	Institutional Admin	40	42	1,344	38	33	86%	450	12	19	1,395
0320	Class Laboratory	Physics	5	12	102	25	20	82%	976	39	68	245
0322	Class Laboratory	Physics	10	29	234	25	23	94%	773	31	68	679
0326	Class Laboratory	Physics	12	33	267	25	22	89%	773	31	68	733
0404	Classroom	Institutional Admin	44	44	1,387	40	31	79%	533	13	19	1,387
0412	Classroom	Institutional Admin	44	44	1,490	40	34	85%	533	13	19	1,490
0414	Classroom	Institutional Admin	32	38	606	35	19	56%	430	12	19	735
0416	Seminar Room	Institutional Admin	18	21	185	18	10	57%	295	16	22	216
0418	Classroom	Institutional Admin	37	37	945	35	24	69%	502	14	19	945
0488	Class Laboratory	Atmospheric Sciences	9	12	114	20	13	63%	756	38	68	150
		Subtotal	478	600	18,652	1034	N/A	N/A	16,364	N/A	N/A	22,174
Psychology												
0204	Classroom	Institutional Admin	28	35	712	48	26	54%	719	15	19	879
0205	Classroom	Institutional Admin	27	35	740	50	26	53%	719	14	19	910
0206	Classroom	Institutional Admin	28	35	708	50	24	48%	710	14	19	828
0207	Classroom	Institutional Admin	27	33	670	50	24	48%	710	14	19	802
0304	Classroom	Institutional Admin	27	34	408	25	15	58%	442	18	19	528
0305	Classroom	Institutional Admin	26	32	678	50	25	50%	734	15	19	809
0306	Classroom	Institutional Admin	18	22	625	78	36	46%	1,012	13	19	762
0307	Classroom	Institutional Admin	19	26	494	47	25	53%	723	15	19	658
0308	Classroom	Institutional Admin	27	27	617	40	25	61%	587	15	19	617
0309	Classroom	Institutional Admin	36	36	840	35	22	64%	587	17	19	840
		Subtotal	263	313	6,492	473	N/A	N/A	6,943	N/A	N/A	7,632
Rogers Law Building												
0015	Computer Instructional	Law Library	7	14	75	15	11	71%	841	56	32	150
0017	Class Laboratory	Law Library	11	21	135	15	12	79%	801	53	45	263
0021	Seminar Room	Law Library	7	12	78	26	11	42%	651	25	22	133
0118	Classroom	Law Instruction	14	21	282	50	20	40%	1,328	27	19	399
0126	Class Laboratory	Law Instruction	3	7	24	50	8	16%	1,291	26	45	64
0135	Seminar Room	Law Instruction	11	20	92	20	9	46%	679	34	22	175
0137	Classroom	Law Instruction	14	24	240	30	16	52%	1,035	35	19	397
0146	Class Laboratory	Law Instruction	3	6	43	50	14	28%	1,156	23	45	84
0156	Classroom	Law Instruction	11	17	270	50	23	46%	1,546	31	19	390
0160	Lecture Hall	Institutional Admin	12	19	371	96	29	30%	1,897	20	17	575
0164	Lecture Hall	Institutional Admin	15	20	1,360	196	89	45%	3,068	16	17	1,765

University of Arizona
Instructional Space Utilization Analysis | 2016 Fall Semester

Room Use by Building

Bldg./ Room	Room Type	Department	Classes Per Week	Weekly Class Hours	Total Weekly Demand	Number of Student Stations	Number of Stations Occupied	Percent of Stations Occupied	Room NASF	NASF per Student Station	Standard	WSCH
Rogers Law Building (cont.)												
0168	Lecture Hall	Institutional Admin	4	7	128	92	32	35%	1,897	21	17	218
		Subtotal	112	188	3,098	690	N/A	N/A	16,190	N/A	N/A	4,613
Rountree Hall												
0204	Seminar Room	Law Instruction	10	19	145	25	14	55%	805	32	22	269
		Subtotal	10	19	145	25	N/A	N/A	805	N/A	N/A	269
Saguaro Hall												
0101	Classroom	Institutional Admin	17	23	1,040	80	59	74%	1,403	18	19	1,395
0104	Class Laboratory	Agricultural Education-Ins	9	16	131	35	14	40%	821	23	60	213
0114	Classroom	Institutional Admin	16	20	693	59	40	69%	852	14	19	816
0202	Lecture Hall	Institutional Admin	18	22	1,419	99	75	76%	1,409	14	17	1,715
0223	Classroom	Institutional Admin	23	30	298	31	13	43%	461	15	19	358
0225	Classroom	Institutional Admin	13	18	658	72	51	70%	928	13	19	909
		Subtotal	96	128	4,239	376	N/A	N/A	5,874	N/A	N/A	5,406
Schaefer Center For Creative Photography												
0108	Lecture Hall	Institutional Admin	23	27	2,951	224	127	57%	2,712	12	17	3,499
		Subtotal	23	27	2,951	224	N/A	N/A	2,712	N/A	N/A	3,499
Science-Engineering Library												
0200SW	Collaborative Classroom	UA Library Administration ADM	37	44	7,079	260	180	69%	5,969	23	19	8,238
		Subtotal	37	44	7,079	260	N/A	N/A	5,969	N/A	N/A	8,238
Shantz												
0242E	Classroom	Institutional Admin	19	25	372	44	19	44%	812	18	19	501
0242W	Classroom	Institutional Admin	16	20	182	20	11	56%	343	17	19	227
0247	Classroom	Institutional Admin	10	14	113	24	11	45%	426	18	19	157
0440	Classroom	Agric Biosystems Eng.-Ins	10	11	196	40	22	54%	986	25	19	230
		Subtotal	55	70	863	128	N/A	N/A	2,567	N/A	N/A	1,115
Social Sciences												
0100	Lecture Hall	Institutional Admin	29	35	12,560	538	432	80%	4,884	9	17	15,263
0114	Classroom	Institutional Admin	34	34	734	33	21	64%	610	18	19	734
0118	Seminar Room	Institutional Admin	39	40	918	26	23	88%	495	19	22	925
0128	Seminar Room	History	5	11	35	29	7	24%	423	15	22	80
0132	Seminar Room	Institutional Admin	26	26	344	24	13	55%	465	19	22	344
0136	Seminar Room	Institutional Admin	19	22	166	18	9	51%	308	17	22	202
0206	Collaborative Classroom	Institutional Admin	22	27	833	60	38	64%	1,099	18	19	1,032
0222	Classroom	Institutional Admin	34	41	1,314	60	39	65%	1,101	18	19	1,594

University of Arizona
Instructional Space Utilization Analysis | 2016 Fall Semester

Room Use by Building

Bldg./ Room	Room Type	Department	Classes Per Week	Weekly Class Hours	Total Weekly Demand	Number of Student Stations	Number of Stations Occupied	Percent of Stations Occupied	Room NASF	NASF per Student Station	Standard	WSCH	
Social Sciences (cont.)													
0307	Seminar Room	Institutional Admin	18	25	295	24	16	65%	416	17	22	425	
0308	Seminar Room	Institutional Admin	14	19	238	22	17	76%	416	19	22	329	
0312	Classroom	Institutional Admin	29	36	679	32	24	75%	610	19	19	821	
0411	Classroom	Institutional Admin	24	31	649	54	26	48%	659	12	19	851	
0415	Seminar Room	Sociology	14	24	119	25	9	34%	557	22	22	216	
		Subtotal	307	371	18,884	945	N/A	N/A	12,043	N/A	N/A	22,816	
South Hall													
0103	Seminar Room	Military Science Tactics	14	21	180	35	13	37%	525	15	22	268	
0110	Seminar Room	Naval Science	8	12	138	26	17	66%	771	30	22	207	
0214	Classroom	Military Aerospace Studies	14	20	157	30	12	38%	581	19	19	226	
		Subtotal	36	53	475	91	N/A	N/A	1,877	N/A	N/A	701	
Speech And Hearing Sciences													
0201	Class Laboratory	Speech Language & Hearing Sci	1	2	19	30	19	63%	492	16	70	38	
0203	Class Laboratory	Speech Language & Hearing Sci	12	18	145	20	13	64%	488	24	70	221	
0205	Classroom	Institutional Admin	19	26	1,117	80	55	69%	1,346	17	19	1,473	
0409	Classroom	Speech Language & Hearing Sci	11	16	255	36	22	62%	707	20	19	370	
		Subtotal	43	62	1,536	166	N/A	N/A	3,033	N/A	N/A	2,102	
Steward Observatory													
0202	Classroom	Institutional Admin	10	13	128	48	13	28%	780	16	19	169	
0204	Classroom	Institutional Admin	17	21	363	48	20	42%	650	14	19	426	
		Subtotal	27	34	491	96	N/A	N/A	1,430	N/A	N/A	595	
Steward Observatory Expansion													
N210	Lecture Hall	Institutional Admin	23	28	3,282	229	143	62%	2,760	12	17	4,007	
		Subtotal	23	28	3,282	229	N/A	N/A	2,760	N/A	N/A	4,007	
Veterinary Science And Microbiology													
0103	Class Laboratory	Soil Water and Enviro Sci-Ins	9	20	191	40	21	52%	1,133	28	68	415	
0105	Class Laboratory	Soil Water and Enviro Sci-Ins	7	10	166	32	21	65%	964	30	68	221	
0129	Class Laboratory	Animal&Biomedical Sciences-Res	10	12	247	41	23	56%	1,053	26	75	306	
		Subtotal	26	42	604	113	N/A	N/A	3,150	84	N/A	942	
Visual Arts Lab													
0119	Seminar Room	School of Art	4	12	54	10	12	123%	732	73	22	162	
		Subtotal	4	12	54	10	N/A	N/A	732	N/A	N/A	162	
Total Rooms Utilized: 445			Grand Total	7,890	10,639	326,088	23,167	N/A	N/A	489,309	N/A	N/A	418,478

University of Arizona
Instructional Space Utilization Analysis | 2016 Fall Semester

CLASSROOMS

CLASSROOM UTILIZATION OVERVIEW

TOTALS					
	Central Scheduling		Department Scheduling		Total
	Number	Percent	Number	Percent	
Number of Rooms	166	86%	27	14%	193
Classes Per Week	4,248	93%	298	7%	4,546
Weekly Student Station Demand	121,174	92%	10,015	8%	131,189
Net Assignable Square Feet	126,716	79%	32,706	21%	159,422
Weekly Student Contact Hours	145,688	91%	14,464	9%	160,152

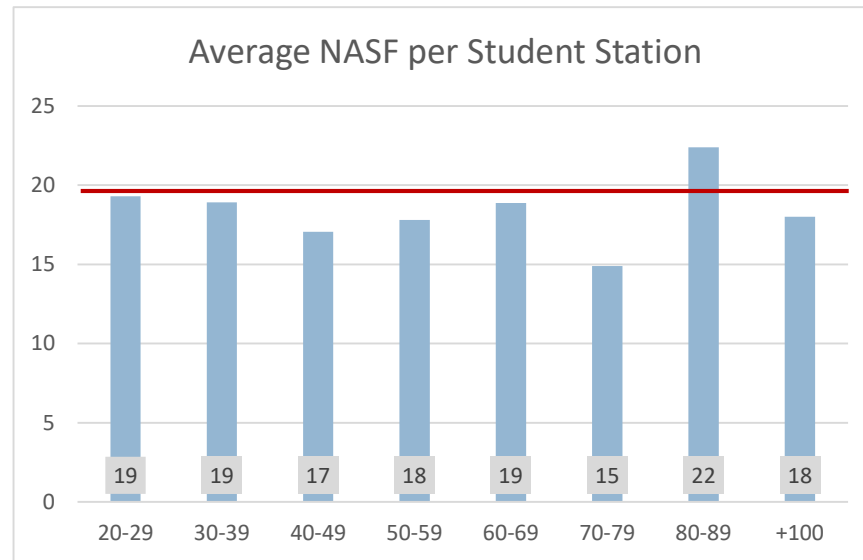
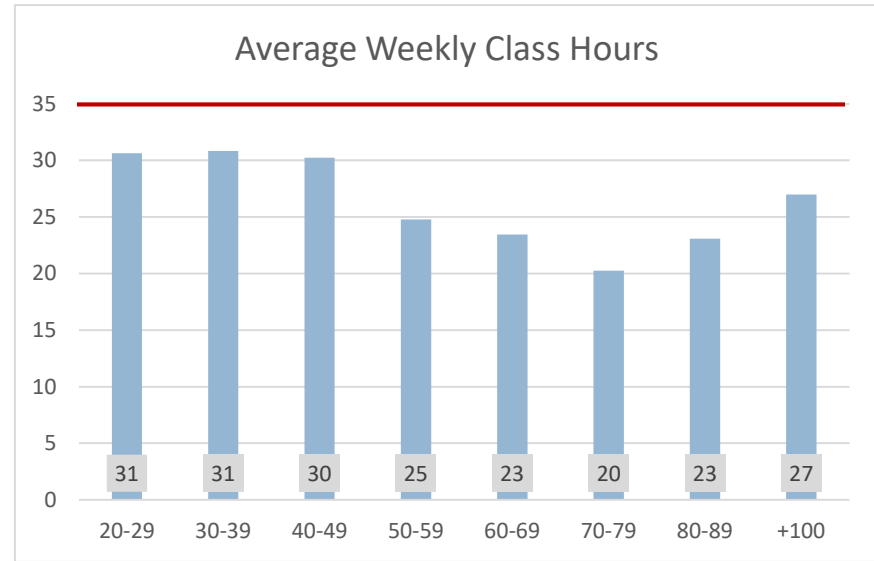
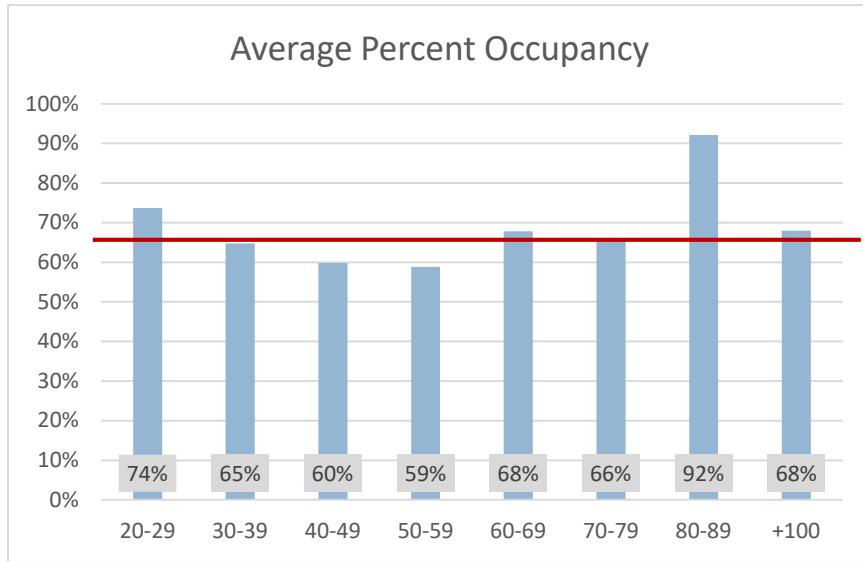
AVERAGES				
	Central Scheduling	Department Scheduling	Overall Average	Standard
Weekly Class Hours	30	16	28	35
Number of Student Stations	45	48	46	-
Number of Student Stations Occupied	30	32	30	-
Percentage of Student Stations Occupied	67%	59%	66%	65%
Net Assignable Square Feet	763	1,211	826	-
NASF per Student Station.	17	25	18	19
Weekly Student Contact Hours	878	536	830	-

University of Arizona
Instructional Space Utilization Analysis | 2016 Fall Semester

CLASSROOM UTILIZATION BY NUMBER OF STUDENT STATIONS

Room Capacity	Number of Rooms	Average of Weekly Class Hours	Average Number of Student Stations	Average Number of stations occupied	Average Percent of Stations Occupied	Average Room NASF	Average NASF per Station	Average WSCH
20-29								
Central Scheduling	36	34	25	20	79%	462	18	704
Department Scheduling	5	7	26	9	35%	679	27	107
30-39								
Central Scheduling	31	33	35	22	64%	607	18	733
Department Scheduling	6	21	32	22	69%	813	26	403
40-49								
Central Scheduling	47	31	43	26	61%	714	17	835
Department Scheduling	5	22	43	21	48%	923	22	440
50-59								
Central Scheduling	24	28	54	33	61%	905	17	915
Department Scheduling	5	11	53	25	47%	1,192	23	254
60-69								
Central Scheduling	12	24	62	42	69%	1,086	18	1,016
Department Scheduling	2	19	62	39	63%	1,576	25	763
70-79								
Central Scheduling	7	22	74	48	65%	1,056	14	1,066
Department Scheduling	1	7	72	52	72%	1,364	19	364
80-89								
Central Scheduling	5	26	80	61	76%	1,338	17	1,580
Department Scheduling	2	16	83	111	133%	3,043	37	1,167
+100								
Central Scheduling	4	25	132	87	67%	2,225	17	2,213
Department Scheduling	1	35	150	110	73%	3,257	22	3,817

CLASSROOM UTILIZATION BY NUMBER OF STUDENT STATIONS – GRAPHS



— ABOR Standard: 65% Occupancy, 35 Hours/Week, 19 NASF/student station

University of Arizona
Instructional Space Utilization Analysis | 2016 Fall Semester

ANALYSIS OF INDIVIDUAL CLASSROOMS

Classrooms

Building	Room	Department	Classes Per Week	Weekly Class Hours	Total Weekly Demand	No. of Student Stations	Average Station Occupied		Room NASF	NASF per Student Station	Standard	WSCH
							Number	Percent				
Aerospace & Mech Eng	S324	Institutional Admin	12	15	314	55	25	45%	930	17	19	367
Aerospace & Mech Eng	S336	Institutional Admin	18	23	426	35	24	69%	601	17	19	537
Aerospace & Mech Eng	S338	Institutional Admin	18	21	635	55	34	61%	966	18	19	711
Biological Sciences East	0225	Sch of Nat Rsrc&Enviro-Res	2	4	52	56	26	46%	1,003	18	19	108
Biological Sciences East	0314	Institutional Admin	12	15	232	25	19	77%	504	20	19	291
Biological Sciences West	0208	Institutional Admin	13	18	563	71	41	57%	1,080	15	19	736
Biological Sciences West	0210	Institutional Admin	36	38	907	40	25	61%	602	15	19	948
Biological Sciences West	0212	Institutional Admin	23	25	520	28	22	80%	497	18	19	570
Biological Sciences West	0219	Institutional Admin	18	23	589	56	32	58%	814	15	19	749
Biological Sciences West	0237	Institutional Admin	26	29	656	46	25	55%	840	18	19	736
CAPLA - West	0302A	Institutional Admin	34	39	511	33	16	48%	619	19	19	618
Chavez Bldg.	0103	Institutional Admin	37	44	1,103	40	30	74%	571	14	19	1,297
Chavez Bldg.	0104	Institutional Admin	30	39	954	50	32	64%	722	14	19	1,281
Chavez Bldg.	0105	Institutional Admin	34	39	996	40	29	73%	571	14	19	1,134
Chavez Bldg.	0109	Institutional Admin	34	39	965	40	28	70%	571	14	19	1,075
Chavez Bldg.	0301	Institutional Admin	29	33	1,763	80	62	77%	1,008	13	19	2,040
Chavez Bldg.	0302	Institutional Admin	29	29	629	26	20	76%	425	16	19	629
Chavez Bldg.	0303	Institutional Admin	26	33	568	46	22	47%	640	14	19	710
Chavez Bldg.	0304	Institutional Admin	29	34	839	42	30	70%	614	15	19	992
Chavez Bldg.	0305	Institutional Admin	35	35	688	25	19	77%	350	14	19	688
Chavez Bldg.	0306	Institutional Admin	32	32	724	28	22	77%	425	15	19	724
Chavez Bldg.	0308	Institutional Admin	32	37	974	40	30	74%	576	14	19	1,086
Chavez Bldg.	0316	Institutional Admin	30	37	776	42	24	57%	720	17	19	919
Chavez Bldg.	0400	Institutional Admin	18	24	879	70	51	72%	1,056	15	19	1,212
Chavez Bldg.	0405	Institutional Admin	15	20	741	72	51	71%	1,008	14	19	1,029
Chemistry	0126	Institutional Admin	31	35	306	35	11	32%	638	18	19	331

University of Arizona
Instructional Space Utilization Analysis | 2016 Fall Semester

Classrooms

Building	Room	Department	Classes Per Week	Weekly Class Hours	Total Weekly Demand	No. of Student Stations	Average Station Occupied Number	Percent	Room NASF	NASF per Student Station	Standard	WSCH
Civil Engineering	0201	Institutional Admin	23	30	581	43	25	58%	904	21	19	752
Communication	0113	Institutional Admin	15	19	488	45	32	71%	748	17	19	621
Communication	0206	Institutional Admin	22	28	764	56	34	60%	800	14	19	956
Communication	0214	Institutional Admin	21	26	673	48	32	67%	742	15	19	841
Communication	0311	Institutional Admin	27	34	646	42	23	55%	810	19	19	791
Drachman Hall	A112	Institutional Admin	11	16	138	30	15	48%	1,160	39	19	200
Drachman Hall	A114	Institutional Admin	16	28	1,698	128	106	83%	2,444	19	19	2,878
Drachman Hall	A116	Institutional Admin	7	13	83	42	12	28%	1,402	33	19	165
Drachman Hall	A118	Institutional Admin	15	25	484	60	32	53%	1,247	21	19	846
Drachman Hall	A119	Institutional Admin	7	16	86	20	12	58%	564	28	19	196
Drachman Hall	A120	Institutional Admin	9	21	337	60	35	59%	1,222	20	19	749
Drachman Hall	A122	Institutional Admin	14	23	266	40	18	44%	1,022	26	19	391
Drachman Hall	B109	Institutional Admin	18	22	1,936	128	102	79%	2,391	19	19	2,301
Drachman Hall	B111	Institutional Admin	14	22	1,144	128	84	66%	2,416	19	19	1,793
Education	0102	Education - Dean's Office	3	7	42	50	14	28%	1,161	23	19	92
Education	0308	Institutional Admin	31	37	681	32	23	70%	825	26	19	805
Education	0310	Institutional Admin	11	15	349	49	27	55%	820	17	19	462
Education	0316	Institutional Admin	27	27	584	35	24	68%	537	15	19	584
Education	0318	Institutional Admin	14	18	444	50	32	63%	817	16	19	557
Education	0320	Institutional Admin	36	42	846	35	23	66%	538	15	19	979
Education	0331	Institutional Admin	34	40	612	25	17	67%	672	27	19	689
Education	0333	Institutional Admin	34	39	1,029	40	30	75%	960	24	19	1,151
Education	0337	Institutional Admin	31	31	610	25	19	78%	865	35	19	610
Education	0341	Institutional Admin	32	33	662	25	18	73%	725	29	19	678
Education	0349	Institutional Admin	23	28	647	46	28	61%	914	20	19	792
Education	0351	Institutional Admin	26	30	682	48	26	55%	854	18	19	796
Education	0437	Disability Psychoeduc Studies	11	24	234	32	21	66%	993	31	19	496
Education	0441A	Institutional Admin	29	29	715	37	24	64%	650	18	19	715

University of Arizona
Instructional Space Utilization Analysis | 2016 Fall Semester

Classrooms

Building	Room	Department	Classes	Weekly	Total	No. of	Average		Room NASF	NASF per	Standard	WSCH
			Per Week	Class Hours	Weekly Demand	Student Stations	Station Number	Percent		Student Station		
Electrical & Computer Eng.	0102	Institutional Admin	19	24	559	48	30	62%	732	15	19	706
Electrical & Computer Eng.	0107	Institutional Admin	17	21	594	48	33	69%	839	17	19	751
Engineering	0214	Engineering Administration	21	21	828	45	40	89%	1,068	24	19	828
Engineering	0307	Institutional Admin	29	36	767	35	26	74%	527	15	19	927
Engineering	0308	Institutional Admin	30	35	820	40	26	65%	538	13	19	944
Engineering	0311	Institutional Admin	28	34	659	35	23	65%	504	14	19	771
Fred Fox School of Music	0146	Institutional Admin	25	29	1,523	142	55	39%	1,650	12	19	1,879
Gittings Bldg.	0201	Institutional Admin	9	14	391	65	43	66%	819	13	19	587
Gittings Bldg.	0203	Institutional Admin	8	10	234	49	29	60%	690	14	19	287
Gittings Bldg.	0205	Institutional Admin	14	19	343	38	23	62%	655	17	19	458
Gittings Bldg.	0207	Institutional Admin	15	19	394	38	27	70%	683	18	19	500
Gould-Simpson	0701	Institutional Admin	13	17	297	48	23	47%	672	14	19	383
Harshbarger Bldg.	0206	Institutional Admin	13	16	479	58	38	66%	961	17	19	585
Harshbarger Bldg.	0332	Materials Science & Eng.	3	5	17	28	6	20%	515	18	19	28
Harvill Bldg.	0101	Institutional Admin	27	31	1,189	60	45	75%	987	16	19	1,366
Harvill Bldg.	0102	Institutional Admin	26	32	961	56	39	69%	1,112	20	19	1,166
Harvill Bldg.	0103	Institutional Admin	35	35	542	24	16	67%	448	19	19	542
Harvill Bldg.	0115	Institutional Admin	26	29	858	52	32	61%	1,475	28	19	942
Harvill Bldg.	0204	Institutional Admin	18	24	1,171	80	65	81%	1,479	18	19	1,551
Harvill Bldg.	0208	Institutional Admin	39	39	1,255	40	32	81%	698	17	19	1,255
Harvill Bldg.	0234	Institutional Admin	26	26	578	32	23	72%	508	16	19	578
Harvill Bldg.	0302	Institutional Admin	19	24	1,148	80	62	78%	1,453	18	19	1,443
Harvill Bldg.	0313	Institutional Admin	37	37	1,148	40	29	73%	702	18	19	1,148
Harvill Bldg.	0316	Institutional Admin	27	32	695	42	26	61%	708	17	19	815
Harvill Bldg.	0318	Institutional Admin	17	21	712	60	43	71%	967	16	19	888
Harvill Bldg.	0319	Institutional Admin	25	30	563	40	23	56%	654	16	19	654

University of Arizona
Instructional Space Utilization Analysis | 2016 Fall Semester

Classrooms

Building	Room	Department	Classes	Weekly	Total	No. of	Average		Room NASF	NASF per	Standard	WSCH
			Per Week	Class Hours	Weekly Demand	Student Stations	Station Number	Percent		Student Station		
Harvill Bldg.	0332B	Institutional Admin	32	39	886	40	26	66%	628	16	19	1,037
Harvill Bldg.	0332C	Institutional Admin	35	35	738	35	22	62%	547	16	19	738
Harvill Bldg.	0411	Institutional Admin	27	34	628	38	22	58%	664	17	19	776
Harvill Bldg.	0415	Institutional Admin	21	26	820	58	39	67%	988	17	19	1,016
Harvill Bldg.	0428	Institutional Admin	20	26	591	42	30	71%	871	21	19	763
Haury Anthropology Bldg.	0216	Institutional Admin	16	20	915	78	58	74%	1,189	15	19	1,152
Kuiper Space Sci Add	0312	Lunar and Planetary Lab	12	18	102	42	10	23%	820	20	19	158
Levy Cancer Ctr	2919	Cancer Center Division	2	4	22	25	11	44%	546	22	19	44
Math Teaching Lab	0120	Mathematics	18	25	332	25	18	74%	1,006	40	19	450
Math Teaching Lab	0121	Mathematics	1	1	8	25	8	32%	741	30	19	8
Math Teaching Lab	0123	Mathematics	1	2	2	25	2	8%	585	23	19	4
Math Teaching Lab	0124	Mathematics	22	27	272	31	13	42%	908	29	19	327
McClelland Hall	0113	Eller Administration	5	13	232	30	46	155%	651	22	19	604
McClelland Hall	0118	Institutional Admin	23	34	528	34	23	67%	557	16	19	775
McClelland Hall	0123	Institutional Admin	22	34	1,088	75	50	67%	1,116	15	19	1,662
McClelland Hall	0125	Institutional Admin	19	29	799	58	41	70%	1,193	21	19	1,207
McClelland Hall	0127	Institutional Admin	20	33	885	54	45	82%	1,110	21	19	1,464
McClelland Hall	0128	Institutional Admin	24	36	879	54	37	69%	1,110	21	19	1,288
McClelland Hall	0129	Institutional Admin	22	32	854	54	40	73%	1,110	21	19	1,233
McClelland Hall	0130	Institutional Admin	19	30	561	39	28	73%	841	22	19	888
McClelland Hall	0131	Institutional Admin	22	33	618	39	28	72%	841	22	19	927
McClelland Hall	0132	Institutional Admin	22	35	660	40	29	73%	841	21	19	1,028
McClelland Hall	0133	Institutional Admin	22	33	1,018	63	46	73%	1,155	18	19	1,527
McClelland Hall	0134	Institutional Admin	22	33	980	61	45	73%	1,155	19	19	1,470
McClelland Park	0101	Sch of Fam & Consum Sci-Ins	16	22	579	64	36	56%	1,494	23	19	799
McClelland Park	0103	Sch of Fam & Consum Sci-Ins	22	29	1,385	80	60	75%	2,090	26	19	1,848
McClelland Park	0105	Sch of Fam & Consum Sci-Ins	29	35	3,117	150	110	73%	3,257	22	19	3,817

University of Arizona
Instructional Space Utilization Analysis | 2016 Fall Semester

Classrooms

Building	Room	Department	Classes Per Week	Weekly Class Hours	Total Weekly Demand	No. of Student Stations	Average Station Occupied		Room NASF	NASF per Student Station	Standard	WSCH
							Number	Percent				
Meinel Optical Sci West Bldg Exp	0305	College of Optical Sciences	23	32	367	40	14	35%	853	21	19	485
Meinel Optical Sci Add	0422	Institutional Admin	20	27	400	33	19	59%	684	21	19	525
Meinel Optical Sci Add	0432	Institutional Admin	24	28	399	32	16	50%	472	15	19	437
Mines & Metallurgy	0225	Mining & Geological Eng.	21	29	372	46	18	38%	890	19	19	501
Modern Languages	0201	Institutional Admin	37	44	771	25	21	83%	392	16	19	922
Modern Languages	0202	Institutional Admin	32	39	762	40	24	60%	585	15	19	930
Modern Languages	0203	Institutional Admin	27	31	566	25	22	87%	392	16	19	638
Modern Languages	0204	Institutional Admin	26	38	491	25	21	83%	392	16	19	687
Modern Languages	0205	Institutional Admin	35	42	814	37	23	62%	587	16	19	957
Modern Languages	0210	Institutional Admin	21	28	800	54	39	73%	691	13	19	1,042
Modern Languages	0212	Institutional Admin	35	41	731	33	21	64%	532	16	19	858
Modern Languages	0214	Institutional Admin	36	42	830	33	23	70%	532	16	19	966
Modern Languages	0301	Institutional Admin	30	30	588	25	20	78%	392	16	19	588
Modern Languages	0302	Institutional Admin	42	42	1,030	25	24	96%	392	16	19	1,030
Modern Languages	0303	Institutional Admin	36	42	881	42	24	58%	593	14	19	1,026
Modern Languages	0304	Institutional Admin	30	36	752	42	25	60%	593	14	19	912
Modern Languages	0306	Institutional Admin	33	33	717	25	21	84%	392	16	19	717
Modern Languages	0310	Institutional Admin	12	17	554	69	46	67%	834	12	19	801
Modern Languages	0312	Institutional Admin	34	41	913	40	27	66%	532	13	19	1,086
Modern Languages	0314	Institutional Admin	33	39	839	40	25	63%	532	13	19	990
Modern Languages	0401	Institutional Admin	33	33	673	25	20	82%	392	16	19	673
Modern Languages	0402	Institutional Admin	42	42	891	25	19	75%	392	16	19	891
Modern Languages	0403	Institutional Admin	35	35	779	25	23	93%	392	16	19	779
Modern Languages	0404	Institutional Admin	34	36	754	25	24	95%	392	16	19	807
Modern Languages	0405	Institutional Admin	35	35	853	25	24	95%	392	16	19	853
Modern Languages	0406	Institutional Admin	40	40	974	25	25	100%	396	16	19	974
Modern Languages	0410	Institutional Admin	17	21	653	55	36	66%	846	15	19	779
Modern Languages	0411	Institutional Admin	27	33	693	47	26	55%	845	18	19	867

University of Arizona
Instructional Space Utilization Analysis | 2016 Fall Semester

Classrooms

Building	Room	Department	Classes Per Week	Weekly Class Hours	Total Weekly Demand	No. of Student Stations	Average Station Occupied Number	Percent	Room NASF	NASF per Student Station	Standard	WSCH
Modern Languages	0413	Institutional Admin	21	27	827	60	38	64%	846	14	19	1,035
Modern Languages	0502	Institutional Admin	39	39	928	25	23	94%	392	16	19	928
Modern Languages	0503	Institutional Admin	32	32	713	25	23	90%	392	16	19	713
Modern Languages	0504	Institutional Admin	36	36	842	25	24	97%	392	16	19	842
Modern Languages	0505	Institutional Admin	38	38	863	25	23	91%	392	16	19	863
Modern Languages	0506	Institutional Admin	39	39	926	25	22	90%	396	16	19	926
Nursing	0105	College of Nursing	2	7	104	72	52	72%	1,364	19	19	364
Nursing	0117	College of Nursing	1	3	162	85	162	191%	3,996	47	19	486
Nursing	0122	College of Nursing	4	6	172	57	43	75%	924	16	19	280
Nursing	0470	College of Nursing	5	15	214	60	43	71%	1,658	28	19	726
Pacheco ILC	0117	Institutional Admin	34	40	714	28	20	72%	556	20	19	825
Pacheco ILC	0119	Institutional Admin	19	24	904	60	47	78%	1,349	22	19	1,115
Pacheco ILC	0125	Institutional Admin	4	5	177	60	47	78%	1,354	23	19	213
Pacheco ILC	0129	Institutional Admin	35	42	723	28	19	70%	539	19	19	842
Pacheco ILC	0133	Institutional Admin	32	38	698	28	22	77%	532	19	19	827
Pacheco ILC	0135	Institutional Admin	34	39	778	28	22	79%	539	19	19	877
Pacheco ILC	0145	Institutional Admin	34	40	683	28	19	68%	556	20	19	777
Pacheco ILC	0151	Institutional Admin	31	38	689	28	22	78%	569	20	19	832
Physics-Atmospheric Sci	0220	Institutional Admin	24	30	770	54	28	52%	842	16	19	884
Physics-Atmospheric Sci	0224	Institutional Admin	21	25	625	54	29	54%	842	16	19	720
Physics-Atmospheric Sci	0304	Institutional Admin	24	29	584	42	23	55%	533	13	19	690
Physics-Atmospheric Sci	0312	Institutional Admin	39	39	1,202	42	31	74%	533	13	19	1,202
Physics-Atmospheric Sci	0314	Institutional Admin	37	37	1,045	35	28	80%	450	13	19	1,045
Physics-Atmospheric Sci	0318	Institutional Admin	40	42	1,344	38	33	86%	450	12	19	1,395
Physics-Atmospheric Sci	0404	Institutional Admin	44	44	1,387	40	31	79%	533	13	19	1,387
Physics-Atmospheric Sci	0412	Institutional Admin	44	44	1,490	40	34	85%	533	13	19	1,490
Physics-Atmospheric Sci	0414	Institutional Admin	32	38	606	35	19	56%	430	12	19	735

University of Arizona
Instructional Space Utilization Analysis | 2016 Fall Semester

Classrooms

Building	Room	Department	Classes Per Week	Weekly Class Hours	Total Weekly Demand	No. of Student Stations	Average Station Occupied		Room NASF	NASF per Student Station	Standard	WSCH
							Number	Percent				
Physics-Atmospheric Sci	0418	Institutional Admin	37	37	945	35	24	69%	502	14	19	945
Psychology	0204	Institutional Admin	28	35	712	48	26	54%	719	15	19	879
Psychology	0205	Institutional Admin	27	35	740	50	26	53%	719	14	19	910
Psychology	0206	Institutional Admin	28	35	708	50	24	48%	710	14	19	828
Psychology	0207	Institutional Admin	27	33	670	50	24	48%	710	14	19	802
Psychology	0304	Institutional Admin	27	34	408	25	15	58%	442	18	19	528
Psychology	0305	Institutional Admin	26	32	678	50	25	50%	734	15	19	809
Psychology	0306	Institutional Admin	18	22	625	78	36	46%	1,012	13	19	762
Psychology	0307	Institutional Admin	19	26	494	47	25	53%	723	15	19	658
Psychology	0308	Institutional Admin	27	27	617	40	25	61%	587	15	19	617
Psychology	0309	Institutional Admin	36	36	840	35	22	64%	587	17	19	840
Rogers Law Bldg.	0118	Law Instruction	14	21	282	50	20	40%	1,328	27	19	399
Rogers Law Bldg.	0137	Law Instruction	14	24	240	30	16	52%	1,035	35	19	397
Rogers Law Bldg.	0156	Law Instruction	11	17	270	50	23	46%	1,546	31	19	390
Saguaro Hall	0101	Institutional Admin	17	23	1,040	80	59	74%	1,403	18	19	1,395
Saguaro Hall	0114	Institutional Admin	16	20	693	59	40	69%	852	14	19	816
Saguaro Hall	0223	Institutional Admin	23	30	298	31	13	43%	461	15	19	358
Saguaro Hall	0225	Institutional Admin	13	18	658	72	51	70%	928	13	19	909
Shantz	0242E	Institutional Admin	19	25	372	44	19	44%	812	18	19	501
Shantz	0242W	Institutional Admin	16	20	182	20	11	56%	343	17	19	227
Shantz	0247	Institutional Admin	10	14	113	24	11	45%	426	18	19	157
Shantz	0440	Agric Biosystems Eng.-Ins	10	11	196	40	22	54%	986	25	19	230
Social Sciences	0114	Institutional Admin	34	34	734	33	21	64%	610	18	19	734
Social Sciences	0222	Institutional Admin	34	41	1,314	60	39	65%	1,101	18	19	1,594
Social Sciences	0312	Institutional Admin	29	36	679	32	24	75%	610	19	19	821
Social Sciences	0411	Institutional Admin	24	31	649	54	26	48%	659	12	19	851
South Hall	0214	Military Aerospace Studies	14	20	157	30	12	38%	581	19	19	226
Speech & Hearing Sci	0205	Institutional Admin	19	26	1,117	80	55	69%	1,346	17	19	1,473
Speech & Hearing Sci	0409	Speech Lang & Hearing Sci	11	16	255	36	22	62%	707	20	19	370

University of Arizona
Instructional Space Utilization Analysis | 2016 Fall Semester

Classrooms

Building	Room	Department	Classes Per Week	Weekly Class Hours	Total Weekly Demand	No. of Student Stations	Average Station Occupied		Room NASF	NASF per Student Station	Standard	WSCH	
							Number	Percent					
Steward Observatory	0202	Institutional Admin	10	13	128	48	13	28%	780	16	19	169	
Steward Observatory	0204	Institutional Admin	17	21	363	48	20	42%	650	14	19	426	
193 Classrooms			Total:	4,546	5,476	131,189	8,796	N/A	N/A	159,422	N/A	N/A	160,152
			Average:	24	28	680	46	30	66%	826	18	19	830

University of Arizona
Instructional Space Utilization Analysis | 2016 Fall Semester

SEMINAR ROOMS

SEMINAR ROOM UTILIZATION OVERVIEW

TOTALS					
	Central Scheduling		Department Scheduling		Total
	Number	Percent	Number	Percent	
Number of Rooms	34	67%	17	33%	51
Classes per Week	731	81%	166	19%	897
Weekly Student Station Demand	12,088	80%	2,957	20%	15,045
Net Assignable Square Feet	15,499	54%	13,362	46%	28,861
Weekly Student Contact Hours	14,321	76%	4,552	24%	18,873

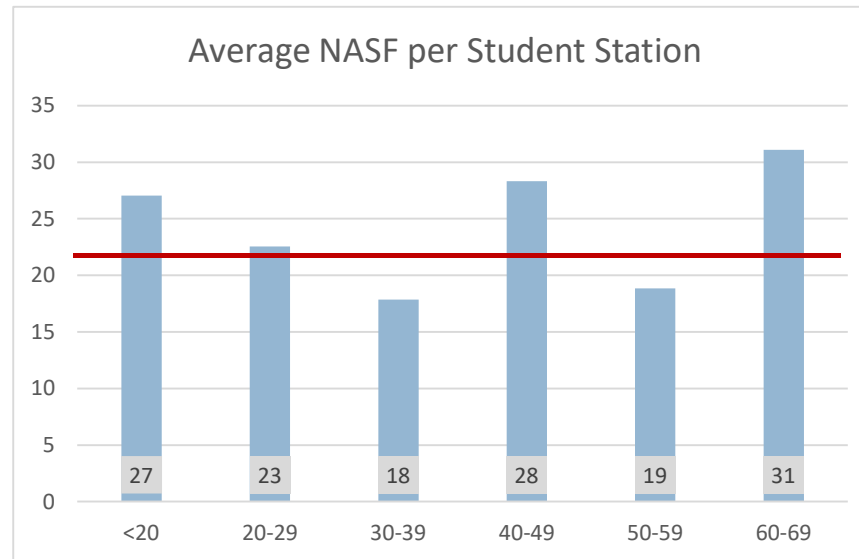
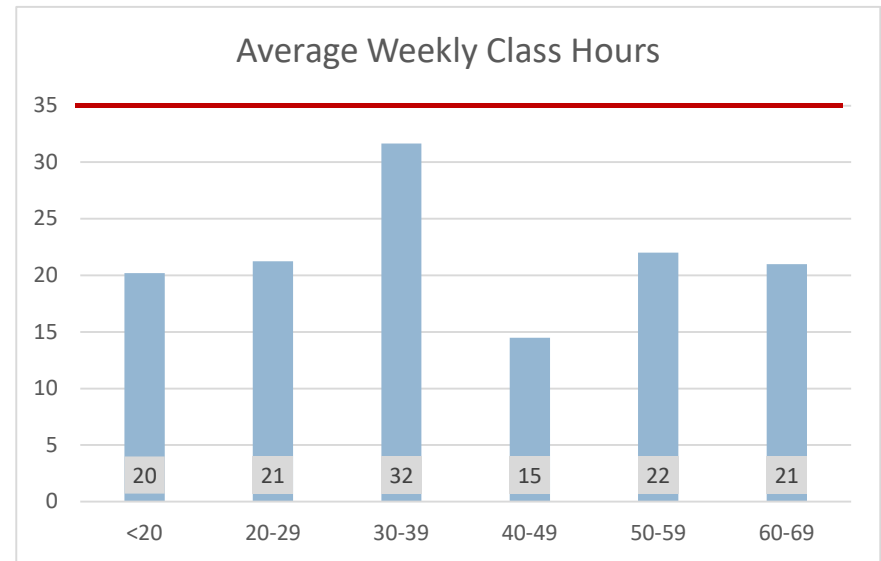
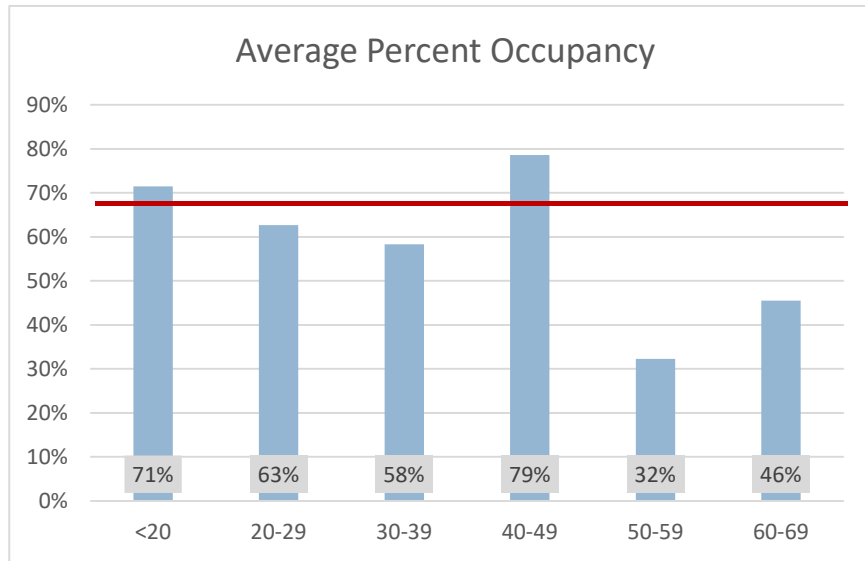
AVERAGES				
	Central Scheduling	Department Scheduling	Overall Average	Standard
Weekly Class Hours	26	17	23	35
Number of Student Stations	24	29	26	-
Number of Student Stations Occupied	16	15	16	-
Percentage of Student Stations Occupied	66%	57%	63%	67%
Net Assignable Square Feet	456	786	566	-
NASF per Student Station.	19	30	23	22
Weekly Student Contact Hours	421	268	370	-

University of Arizona
Instructional Space Utilization Analysis | 2016 Fall Semester

SEMINAR ROOM UTILIZATION BY NUMBER OF STUDENT STATIONS

Room Capacity	Number of Rooms	Average Weekly Class Hours	Average Number of Student Stations	Average Number of Stations Occupied	Average Percent of Stations Occupied	Average Room NASF	Average NASF per Student Station	Average WSCH
<20								
Central Scheduling	5	24	16	10	60%	304	19	222
Department Scheduling	2	11	11	11	100%	499	48	127
20-29								
Central Scheduling	21	23	23	16	69%	458	19	399
Department Scheduling	10	17	24	12	50%	677	29	202
30-39								
Central Scheduling	8	33	30	18	61%	547	18	604
Department Scheduling	1	21	35	13	37%	525	15	268
40-49								
Department Scheduling	2	15	40	31	79%	1,133	28	481
50-59								
Department Scheduling	1	22	50	16	32%	943	19	374
60-69								
Department Scheduling	1	21	60	27	46%	1,865	31	671

SEMINAR ROOM UTILIZATION BY NUMBER OF STUDENT STATIONS – GRAPHS



— ABOR Standard: 67%, 35 Hours/Week, 22 NASF/Student Station

University of Arizona
Instructional Space Utilization Analysis | 2016 Fall Semester

ANALYSIS OF INDIVIDUAL SEMINAR ROOMS

Seminar Rooms

Building	Room	Department	Classes Per Week	Weekly Class Hours	Total Weekly Demand	No. of Student Stations	Average Station Occupied		Room NASF	NASF per Student Station	Standard	WSCH
							Number	Percent				
Abrams Bldg.	0102	Senior VP Health Sciences	4	32	64	20	16	80%	583	29	22	512
Art Bldg. Add	0245	School of Art	5	13	38	20	8	38%	674	34	22	98
Drachman Hall	A127	Institutional Admin	2	3	18	22	9	41%	193	9	22	27
Education	0240	Institutional Admin	34	38	784	30	22	73%	679	23	22	860
Education	0432	Institutional Admin	18	23	252	22	14	62%	535	24	22	315
Education	0502	Institutional Admin	21	27	363	22	18	80%	475	22	22	466
Education	0535	Institutional Admin	30	34	452	22	14	64%	475	22	22	485
Electrical & Computer Eng	0258	Institutional Admin	23	28	247	20	11	56%	397	20	22	303
ENR2	S210	Institute of the Environment	9	14	215	40	21	53%	1,474	37	22	335
ENR2	S223	Sch of Geography & Dev	20	23	308	20	15	77%	954	48	22	323
ENR2	S230	Sch of Geography & Dev	16	21	484	60	27	46%	1,865	31	22	671
Forbes	0206	Institutional Admin	20	23	382	25	18	72%	465	19	22	419
Gould-Simpson	0849	Mathematics	1	1	11	29	11	38%	668	23	22	11
Harvill Bldg.	0105	Institutional Admin	22	27	422	24	19	80%	463	19	22	516
Harvill Bldg.	0107	Institutional Admin	35	41	555	30	16	52%	538	18	22	648
Harvill Bldg.	0111	Institutional Admin	11	16	119	24	12	49%	460	19	22	143
Harvill Bldg.	0130	Institutional Admin	37	37	859	28	22	80%	758	27	22	859
Harvill Bldg.	0134	Institutional Admin	18	22	289	24	16	65%	508	21	22	353
Harvill Bldg.	0140	Institutional Admin	29	33	430	30	17	56%	508	17	22	510
Harvill Bldg.	0232	Institutional Admin	23	28	482	26	21	81%	487	19	22	601
Harvill Bldg.	0240	Institutional Admin	21	25	284	30	14	48%	508	17	22	335
Harvill Bldg.	0301	Institutional Admin	20	25	172	18	9	53%	346	19	22	237
Harvill Bldg.	0303	Institutional Admin	20	24	258	20	13	67%	378	19	22	299
Harvill Bldg.	0315	Institutional Admin	10	13	160	24	16	65%	449	19	22	206
Harvill Bldg.	0413	Institutional Admin	12	16	224	24	18	73%	436	18	22	303
Harvill Bldg.	0452	Institutional Admin	25	31	517	30	20	68%	427	14	22	627
Haury Anthropology Bldg.	0219	Institutional Admin	8	12	153	24	18	77%	433	18	22	226
Haury Anthropology Bldg.	0310	School of Anthropology	4	10	37	12	9	77%	266	22	22	92

University of Arizona
Instructional Space Utilization Analysis | 2016 Fall Semester

Seminar Rooms

Building	Room	Department	Classes Per Week	Weekly Class Hours	Total Weekly Demand	No. of Student Stations	Average Station Occupied Number	Percent	Room NASF	NASF per Student Station	Standard	WSCH	
Mathematics	0501	Mathematics	19	22	333	50	16	32%	943	19	22	374	
McClelland Hall	0122	Institutional Admin	21	32	386	30	18	60%	551	18	22	588	
McClelland Hall	0126	Institutional Admin	26	36	551	30	22	72%	670	22	22	758	
McClelland Hall	0201B	Eller Undergrad Programs	15	15	626	40	42	104%	792	20	22	626	
Mines & Metallurgy	0213	Institutional Admin	23	28	420	30	18	61%	491	16	22	502	
Mines & Metallurgy	0221	Institutional Admin	21	23	413	26	21	79%	529	20	22	448	
Modern Languages	0213	Institutional Admin	23	30	352	20	13	66%	376	19	22	392	
Modern Languages	0313	Institutional Admin	25	29	242	12	10	82%	274	23	22	266	
Physics-Atmospheric Sci	0316	Institutional Admin	19	23	156	16	9	58%	295	18	22	190	
Physics-Atmospheric Sci	0416	Institutional Admin	18	21	185	18	10	57%	295	16	22	216	
Rogers Law Bldg.	0021	Law Library	7	12	78	26	11	42%	651	25	22	133	
Rogers Law Bldg.	0135	Law Instruction	11	20	92	20	9	46%	679	34	22	175	
Rountree Hall	0204	Law Instruction	10	19	145	25	14	55%	805	32	22	269	
Social Sciences	0118	Institutional Admin	39	40	918	26	23	88%	495	19	22	925	
Social Sciences	0128	History	5	11	35	29	7	24%	423	15	22	80	
Social Sciences	0132	Institutional Admin	26	26	344	24	13	55%	465	19	22	344	
Social Sciences	0136	Institutional Admin	19	22	166	18	9	51%	308	17	22	202	
Social Sciences	0307	Institutional Admin	18	25	295	24	16	65%	416	17	22	425	
Social Sciences	0308	Institutional Admin	14	19	238	22	17	76%	416	19	22	329	
Social Sciences	0415	Sociology	14	24	119	25	9	34%	557	22	22	216	
South Hall	0103	Military Science Tactics	14	21	180	35	13	37%	525	15	22	268	
South Hall	0110	Naval Science	8	12	138	26	17	66%	771	30	22	207	
Visual Arts Lab	0119	School of Art	4	12	54	10	12	123%	732	73	22	162	
51 Seminar Rooms			Total:	897	1,158	15,045	1,302	N/A	N/A	28,861	N/A	N/A	18,873
			Average:	18	23	295	26	16	63%	566	23	22	370

University of Arizona
Instructional Space Utilization Analysis | 2016 Fall Semester

LECTURE HALLS

LECTURE HALL UTILIZATION OVERVIEW

TOTALS					
	Central Scheduling		Department Scheduling		Total
	Number	Percent	Number	Percent	
Number of Rooms	34	81%	8	19%	42
Classes per Week	861	92%	74	8%	935
Weekly Student Station Demand	132,629	97%	3,533	3%	136,162
Net Assignable Square Feet	87,298	87%	13,535	13%	100,833
Weekly Student Contact Hours	161,725	97%	5,602	3%	167,327

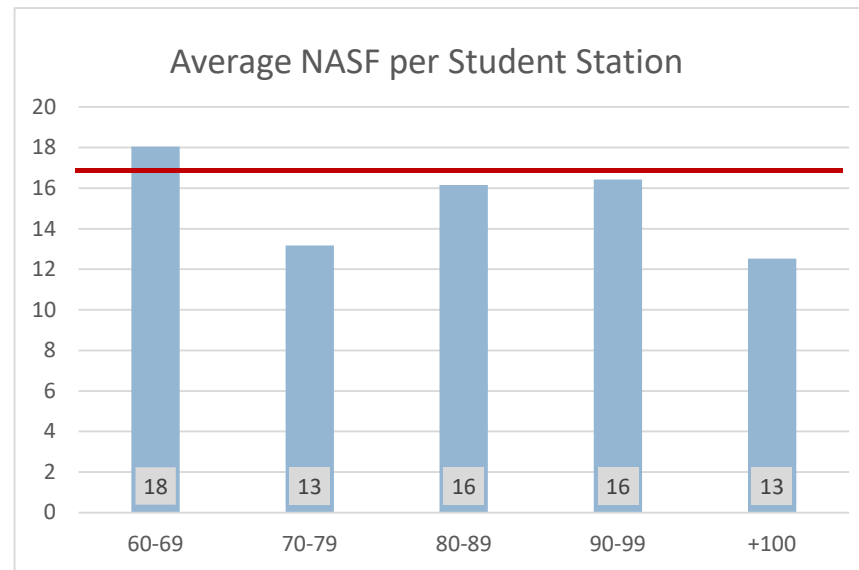
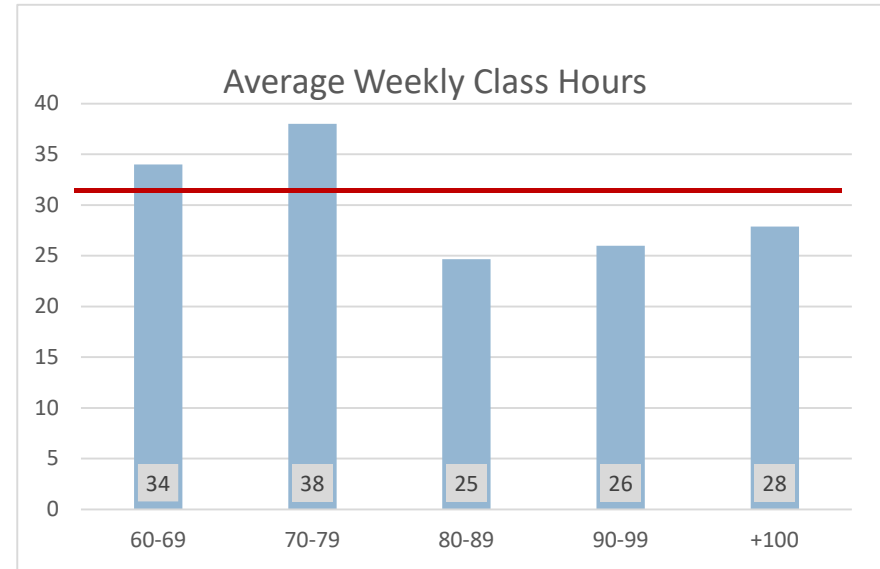
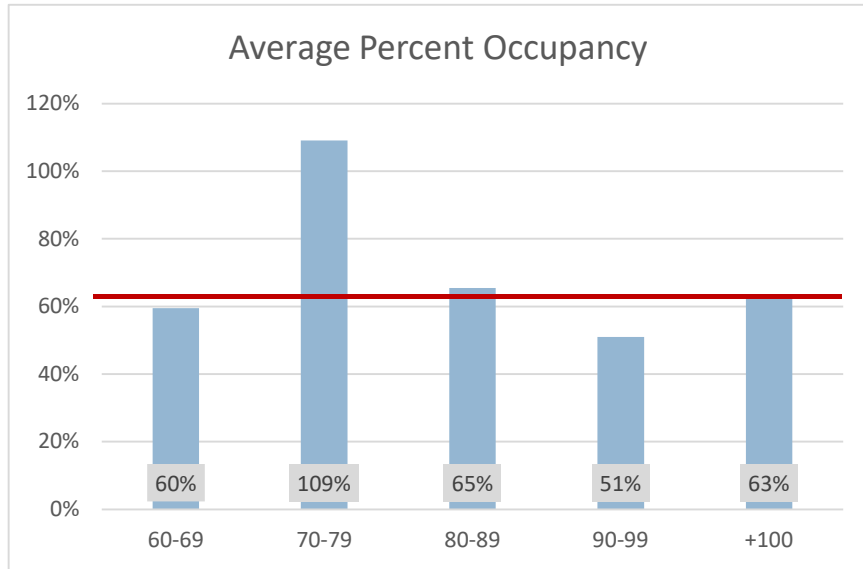
AVERAGES				
	Central Scheduling	Department Scheduling	Overall Average	Standard
Weekly Class Hours	31	14	28	32
Number of Student Stations	205	130	191	-
Number of Student Stations Occupied	146	41	126	-
Percentage of Student Stations Occupied	69%	32%	62%	63%
Net Assignable Square Feet	2,568	1,692	2,401	-
NASF per Student Station.	14	13	13	17
Weekly Student Contact Hours	4,757	700	3,984	-

University of Arizona
Instructional Space Utilization Analysis | 2016 Fall Semester

LECTURE HALL UTILIZATION BY NUMBER OF STUDENT STATIONS

Room Capacity	Number of Rooms	Average of Weekly Class Hours	Average Number of student stations	Average Number of stations occupied	Average Percent of Stations Occupied	Average Room NASF	Average NASF per Student Station	Average WSCH
60-69								
Central Scheduling	1	34	60	36	60%	1,083	18	1,261
70-79								
Central Scheduling	1	38	77	84	109%	1,014	13	3,164
80-89								
Central Scheduling	2	26	86	67	79%	1,237	14	1,717
Department Scheduling	1	23	82	32	39%	1,607	20	901
90-99								
Central Scheduling	5	24	95	52	54%	1,666	18	1,443
Department Scheduling	1	34	91	31	34%	1,006	11	1,074
+100								
Central Scheduling	25	32	248	177	71%	2,976	13	5,866
Department Scheduling	6	9	144	45	31%	1,820	12	604

LECTURE HALL UTILIZATION BY NUMBER OF STUDENT STATIONS – GRAPHS



— ABOR Standard: **63%, 32 Hours/Week, 17 NASF/Student Station**

University of Arizona
Instructional Space Utilization Analysis | 2016 Fall Semester

ANALYSIS OF INDIVIDUAL LECTURE HALLS

Lecture Halls

Building	Room	Department	Classes Per Week	Weekly Class Hours	Total Weekly Demand	No. of Student Stations	Average		Room NASF	NASF	Standard	WSCH
							Station Occupied Number	Percent		per Student Station		
Aerospace & Mech Eng.	S202	Institutional Admin.	33	40	5,165	235	158	67%	3,232	14	17	6,273
Aerospace & Mech Eng.	S212	Institutional Admin.	34	42	2,433	96	70	73%	1,680	18	17	2,899
Arizona Health Sci Ctr	3117	COM Academic Affairs	1	3	42	126	42	33%	1,250	10	17	126
Arizona Health Sci Ctr	5403	Senior VP Health Sci	1	2	40	128	40	31%	1,248	10	17	80
Arizona Health Sci Ctr	8403	Senior VP Health Sci	3	5	129	123	38	30%	1,248	10	17	237
Biological Sciences East	0100	Institutional Admin.	23	26	4,015	271	170	63%	1,834	7	17	4,545
CESL	0102	Institutional Admin.	23	30	3,951	237	171	72%	2,500	11	17	5,132
CESL	0103	Institutional Admin.	30	36	5,386	236	179	76%	2,500	11	17	6,657
Cesar E. Chavez Bldg.	0110	Institutional Admin.	33	39	2,900	142	90	63%	1,691	12	17	3,399
Cesar E. Chavez Bldg.	0111	Institutional Admin.	35	43	3,629	142	103	73%	1,691	12	17	4,458
Chemistry	0111	Institutional Admin.	26	33	4,554	247	172	70%	2,412	10	17	5,766
Chemistry	0134	Institutional Admin.	24	29	2,368	142	100	70%	1,537	11	17	2,883
Chemistry	0209	Institutional Admin.	29	34	1,038	60	36	60%	1,083	18	17	1,261
CAPLA - West	0103	Institutional Admin.	28	32	1,552	94	55	59%	1,448	15	17	1,806
College Of Law Bldg.	0160	Institutional Admin.	12	19	371	96	29	30%	1,897	20	17	575
College Of Law Bldg.	0164	Institutional Admin.	15	20	1,360	196	89	45%	3,068	16	17	1,765
College Of Law Bldg.	0168	Institutional Admin.	4	7	128	92	32	35%	1,897	21	17	218
Education	0211	Institutional Admin.	25	31	3,020	195	120	62%	5,223	27	17	3,646
Emil W. H. Anthropology	0129	Institutional Admin.	22	26	1,482	83	68	82%	1,333	16	17	1,718
ENR2	N120	Institutional Admin.	35	40	16,626	575	474	82%	6,514	11	17	18,785
G. P. Kuiper Space Sci Add	0308	Lunar and Planetary Lab	14	18	935	162	64	40%	2,563	16	17	1,238
Henry Koffler Bldg.	0204	Institutional Admin.	24	29	5,940	304	237	78%	2,916	10	17	7,177
Henry Koffler Bldg.	0216	Institutional Admin.	21	25	1,412	89	67	75%	1,140	13	17	1,716
Henry Koffler Bldg.	0218	Institutional Admin.	19	23	1,928	142	89	63%	1,517	11	17	2,409
Manuel Pacheco ILC	0120	Institutional Admin.	26	33	6,201	300	235	78%	3,764	13	17	7,866
Manuel Pacheco ILC	0130	Institutional Admin.	32	40	3,439	150	109	72%	2,245	15	17	4,441

University of Arizona
Instructional Space Utilization Analysis | 2016 Fall Semester

Lecture Halls

Building	Room	Department	Classes Per Week	Weekly Class Hours	Total Weekly Demand	No. of Student Stations	Average		Room NASF	NASF per Student	Standard	WSCH	
							Station Occupied Number	Percent		Station			
Manuel Pacheco ILC	0140	Enrollment Mngmt	3	3	16	150	5	4%	2,773	18	17	16	
Manuel Pacheco ILC	0150	Institutional Admin.	36	41	4,193	150	114	76%	2,776	19	17	4,724	
Marley	0230	CALS Career & Acad Svcs	15	23	544	82	32	39%	1,607	20	17	901	
McClelland Hall	0207	Institutional Admin.	24	36	4,938	230	206	89%	3,096	13	17	7,407	
Meinel Optical Sciences	0410	Institutional Admin.	29	38	2,489	77	84	109%	1,014	13	17	3,164	
Meinel Opt Sci W Bldg. Expansion	0307	College of Optical Sciences	23	34	726	91	31	34%	1,006	11	17	1,074	
Modern Languages	0311	Institutional Admin.	37	43	3,062	100	83	83%	1,404	14	17	3,600	
Modern Languages	0350	Institutional Admin.	17	21	3,888	318	230	72%	4,660	15	17	4,952	
Physics-Atmospheric Sci.	0201	Institutional Admin.	26	31	6,791	375	252	67%	3,686	10	17	7,903	
Richard A. Harvill Bldg.	0150	Institutional Admin.	22	28	5,974	398	261	66%	4,415	11	17	7,380	
Richard A. Harvill Bldg.	0305	Institutional Admin.	24	30	2,184	118	91	77%	1,360	12	17	2,717	
Saguaro Hall	0202	Institutional Admin.	18	22	1,419	99	75	76%	1,409	14	17	1,715	
Schaefer Center For Creative Photography	0108	Institutional Admin.	23	27	2,951	224	127	57%	2,712	12	17	3,499	
Skaggs Pharmaceutical Science Center	0325	Pharmacy Admin.	14	23	1,101	176	79	45%	1,840	10	17	1,930	
Social Sciences	0100	Institutional Admin.	29	35	12,560	538	432	80%	4,884	9	17	15,263	
Steward Observatory Expansion	N210	Institutional Admin.	23	28	3,282	229	143	62%	2,760	12	17	4,007	
Total:			935	1,167	136,162	8,018	N/A	N/A	100,833	N/A	N/A	167,327	
42 Lecture Halls			Average:	22	28	3,242	191	126	62%	2,401	13	17	3,984

University of Arizona
Instructional Space Utilization Analysis | 2016 Fall Semester

COMPUTER INSTRUCTIONAL ROOMS

COMPUTER INSTRUCTIONAL ROOM UTILIZATION OVERVIEW

TOTALS

	Department Scheduling		Total	
	Number	Percent		
Number of Rooms	12	100%	12	12
Classes per Week	101	100%	101	101
Weekly Student Station Demand	2,094	100%	2,094	2,094
Net Assignable Square Feet	11,707	100%	11,707	11,707
Weekly Student Contact Hours	3,141	100%	3,141	3,141

AVERAGES

	Department Scheduling	Overall Average	Standard
Weekly Class Hours	13	13	32
Number of Student Stations	25	25	-
Number of Student Stations Occupied	18	18	-
Percentage of Student Stations Occupied	81%	81%	75%
Net Assignable Square Feet	976	976	-
NASF per Student Station.	44	44	32
Weekly Student Contact Hours	262	262	-

University of Arizona
Instructional Space Utilization Analysis | 2016 Fall Semester

COMPUTER INSTRUCTIONAL ROOM UTILIZATION BY NUMBER OF STUDENT STATIONS

Room Capacity	Number of Rooms	Average of Weekly Class Hours	Average Number of student stations	Average Number of stations occupied	Average Percent of Stations Occupied	Average Room NASF	Average NASF per Student Station	Average WSCH
<20								
Department Scheduling	3	15	16	17	105%	962	62	275
20-29								
Department Scheduling	6	15	23	20	88%	990	43	313
30-39								
Department Scheduling	2	8	32	14	42%	1,018	32	167
40-49								
Department Scheduling	1	6	48	18	36%	846	18	105

University of Arizona
Instructional Space Utilization Analysis | 2016 Fall Semester

ANALYSIS OF INDIVIDUAL COMPUTER INSTRUCTIONAL ROOMS

Computer Instructional Rooms

Building	Room	Department	Classes Per Week	Weekly Class Hours	Total Weekly Demand	No. of Student Stations	Average Station Occupied		Room NASF	NASF per Student Station	Standard	WSCH	
							Number	Percent					
Aerospace & Mech. Eng.	S426	Aerospace & Mech. Eng.	5	15	87	20	17	87%	923	46	32	261	
Aerospace & Mech. Eng.	S436	Aerospace & Mech. Eng.	9	15	153	20	17	85%	823	41	32	261	
Aerospace & Mech. Eng.	S438	Aerospace & Mech. Eng.	14	14	330	33	24	71%	1,245	38	32	330	
Civil Engineering	0203	Civil Eng. and Eng. Mech.	4	12	80	20	20	100%	659	33	32	240	
College Of Law Building	0015	Law Library	7	14	75	15	11	71%	841	56	32	150	
Computer Center	0319	English	20	30	467	28	23	83%	1,267	45	32	701	
Fred Fox School of Music Add	0137	Ofc Stdnt Computing Rsrcls	12	16	252	15	17	114%	1,355	90	32	302	
Mathematics	0102	Mathematics	1	1	4	30	4	13%	790	26	32	4	
Modern Languages	0412	Humanities Administration	3	3	63	24	21	88%	1,092	46	32	63	
Modern Languages	0510	Humanities Admin	2	6	35	48	18	36%	846	18	32	105	
Physics-Atmospheric Sci.	0170C	Physics	16	16	372	18	23	129%	689	38	32	372	
Richard A. Harvill Bldg.	0401	School of Information	8	16	176	25	22	88%	1,177	47	32	352	
Total:			101	158	2,094	296	N/A	N/A	11,707	N/A	N/A	3,141	
12 Computer Instructional Rooms			Average:	8	13	175	25	18	81%	976	44	32	262

University of Arizona
Instructional Space Utilization Analysis | 2016 Fall Semester

COLLABORATIVE CLASSROOMS

COLLABORATIVE CLASSROOMS UTILIZATION OVERVIEW

TOTALS					
	Central Scheduling		Department Scheduling		Total
	Number	Percent	Number	Percent	
Number of Rooms	8	89%	1	11%	9
Classes per Week	200	84%	37	16%	237
Weekly Student Station Demand	9,702	58%	7,079	42%	16,781
Net Assignable Square Feet	10,896	65%	5,969	35%	16,865
Weekly Student Contact Hours	11,809	59%	8,238	41%	20,047

AVERAGES				
	Central Scheduling	Department Scheduling	Overall Average	Standard
Weekly Class Hours	31	44	32	-
Number of Student Stations	63	260	85	-
Number of Student Stations Occupied	47	180	62	-
Percentage of Student Stations Occupied	71%	69%	71%	-
Net Assignable Square Feet	1,362	5,969	1,874	-
NASF per Student Station.	22	23	22	19
Weekly Student Contact Hours	1,476	8,238	2,227	-

University of Arizona
Instructional Space Utilization Analysis | 2016 Fall Semester

COLLABORATIVE CLASSROOMS UTILIZATION BY NUMBER OF STUDENT STATIONS

Room Capacity	Number of Rooms	Average of Weekly Class Hours	Average Number of student stations	Average Number of stations occupied	Average Percent of Stations Occupied	Average Room NASF	Average NASF per Student Station	Average WSCH
20-29								
Central Scheduling	1	26	24	15	61%	524	22	389
30-39								
Central Scheduling	1	40	30	21	70%	720	24	882
60-69								
Central Scheduling	3	29	60	39	66%	1,264	21	1,153
70-79								
Central Scheduling	1	29	70	52	75%	1,200	17	1,531
+100								
Central Scheduling	1	33	112	92	82%	2,539	23	3,021
Department Scheduling	1	44	260	180	69%	5,969	23	8,238
90-99								
Central Scheduling	1	33	90	76	85%	2,120	24	2,528

University of Arizona
Instructional Space Utilization Analysis | 2016 Fall Semester

ANALYSIS OF INDIVIDUAL COLLABORATIVE CLASSROOMS

Collaborative Classrooms

Building	Room	Department	Classes Per Week	Weekly Class Hours	Total Weekly Demand	No. of Student Stations	Average Station Occupied		Room NASF	NASF per Student Station	Standard	WSCH	
							Number	Percent					
Biological Sci West	0301	Institutional Admin	28	33	2,559	112	92	82%	2,539	23	19	3,021	
Cesar E. Chavez Bldg.	0307	Institutional Admin	33	40	720	30	21	70%	720	24	19	882	
Education	0353	Institutional Admin	28	33	2,180	90	76	85%	2,120	24	19	2,528	
Engineering	0304	Institutional Admin	21	26	332	24	15	61%	524	22	19	389	
Manuel Pacheco ILC	0137	Institutional Admin	27	34	1,127	60	43	72%	1,354	23	19	1,493	
Manuel Pacheco ILC	0141	Institutional Admin	20	25	778	60	36	61%	1,340	22	19	934	
Richard A. Harvill Bldg.	0404	Institutional Admin	21	29	1,173	70	52	75%	1,200	17	19	1,531	
Science-Eng. Library	0200SW	UA Library Admin ADM	37	44	7,079	260	180	69%	5,969	23	19	8,238	
Social Sci	0206	Institutional Admin	22	27	833	60	38	64%	1,099	18	19	1,032	
Total:			237	290	16,781	766	N/A	N/A	16,865	N/A	N/A	20,047	
9 Collaborative Classrooms			Average:	26	32	1,865	85	62	71%	1,874	22	19	2,227

University of Arizona
Instructional Space Utilization Analysis | 2016 Fall Semester

CLASS LABORATORIES

CLASS LABORATORIES UTILIZATION OVERVIEW

TOTALS							
	Class Lab A		Class Lab B		Class Lab C		Total
	Number	Percent	Number	Percent	Number	Percent	
Number of Rooms	19	14%	63	46%	56	41%	138
Classes per Week	195	17%	486	41%	493	42%	1,174
Weekly Student Station Demand	4,569	18%	9,452	38%	10,796	44%	24,817
Net Assignable Square Feet	15,360	9%	71,764	42%	84,497	49%	171,621
Weekly Student Contact Hours	7,292	15%	24,401	50%	17,247	35%	48,939

AVERAGES								
	Class Lab A		Class Lab B		Class Lab C		Standard	
	Number	Percent	Number	Percent	Number	Percent	Min	Max
Weekly Class Hours	16		20		15		25	12.5
Number of Student Stations	31		24		34		-	-
Number of Student Stations Occupied	20		18		20		-	-
Percentage of Student Stations Occupied	73%		81%		69%		85%	85%
Net Assignable Square Feet	808		1,139		1,509		-	-
NASF per Student Station.	29		54		50		Midpoint of Range	
Weekly Student Contact Hours	384		387		308		-	-

¹ Type A class laboratories have the lowest requirement for student station size, such as business and social sciences.

² Type B class laboratories have intermediate student station size needs, and include the physical and biological sciences.

³ Type C laboratories have the highest need for student station size to accommodate specialized equipment, such as engineering and agriculture.

University of Arizona
Instructional Space Utilization Analysis | 2016 Fall Semester

CLASS LABORATORIES UTILIZATION BY NUMBER OF STUDENT STATIONS

Student Stations	Number of Rooms	Avg. Weekly Class Hours	Avg. Number of Student Stations	Avg. Number of Stations Occupied	Avg. Percent of Stations Occupied	Avg. of NASF	Avg. NASF per Student Station	Average WSCH
<20								
Class Lab A	4	15	17	12	73%	534	33	181
Class Lab B	6	19	11	9	112%	1,073	107	216
Class Lab C	12	11	14	13	92%	899	67	128
20-29								
Class Lab A	6	18	23	25	107%	819	35	487
Class Lab B	50	21	23	19	82%	1,163	51	417
Class Lab C	15	13	23	20	83%	1,240	55	242
30-39								
Class Lab A	4	11	33	20	59%	737	22	207
Class Lab B	5	20	33	15	46%	967	30	285
Class Lab C	13	14	31	19	63%	1,297	43	269
40-49								
Class Lab A	1	21	40	23	57%	1,016	25	519
Class Lab B	1	21	41	25	60%	1,396	34	494
Class Lab C	3	18	40	21	51%	1,296	32	377
50-59								
Class Lab A	3	14	50	17	34%	1,140	23	366
Class Lab B	1	14	53	27	51%	936	18	347
Class Lab C	4	13	50	25	50%	2,431	49	283
60-69								
Class Lab A	1	35	60	36	60%	933	16	1,203
Class Lab C	3	12	60	32	54%	2,856	48	495
70-79								
Class Lab C	4	29	73	27	37%	2,765	39	835
80-89								
Class Lab C	1	27	80	29	37%	2,351	29	925
+100								
Class Lab C	1	22	125	21	17%	2,663	21	569

University of Arizona
Instructional Space Utilization Analysis | 2016 Fall Semester

ANALYSIS OF TYPE A CLASS LABORATORIES

Class Laboratories – Type A

Building	Room	Department	Classes Per Week	Weekly Class Hours	Total Weekly Demand	No. of Student Stations	Average		Room NASF	NASF per Student Station	Standard	WSCH	
							Station Occupied Number	Percent					
College Of Law Bldg.	0017	Law Library	11	21	135	15	12	79%	801	53	45	263	
College Of Law Bldg.	0126	Law Instruction	3	7	24	50	8	16%	1,291	26	45	64	
College Of Law Bldg.	0146	Law Instruction	3	6	43	50	14	28%	1,156	23	45	84	
Education	0455	Teachg Learning Sociocult Stds	14	24	302	36	22	60%	724	20	38	524	
Education	0530	Teachg Learning Sociocult Stds	16	21	385	40	23	57%	1,016	25	38	519	
E. W. H. Anthropology Bldg.	0215	School of Anthropology	11	16	218	35	23	66%	896	26	55	235	
Fred Fox School of Music	0202	Institutional Admin	13	17	153	18	12	67%	378	21	38	207	
Fred Fox School of Music	0204	Institutional Admin	17	18	207	18	12	66%	400	22	38	217	
Gould-Simpson	0906	Computer Science	23	35	805	60	36	60%	933	16	50	1,203	
Gould-Simpson	0942	Computer Science	6	11	123	21	21	98%	319	15	50	226	
Henry Koffler Bldg.	0112	Physiology-Undergrad Prog	7	16	210	24	30	125%	1,191	50	70	487	
Henry Koffler Bldg.	0560	Physiology-Undergrad Prog	12	32	376	24	31	131%	1,328	55	70	1,004	
Ina E. Gittings Bldg.	0036	Physiology-Undergrad Prog	2	3	24	15	12	80%	555	37	70	36	
McClelland Hall	0120	Eller Administration	16	27	529	24	36	148%	1,110	46	35	931	
Richard A. Harvill Bldg.	0210	Institutional Admin	24	30	806	50	29	58%	972	19	38	950	
Richard A. Harvill Bldg.	0402	School of Information	2	2	29	30	15	48%	834	28	50	29	
Roy P. Drachman Hall	A319	Public Health Administration	2	3	36	24	18	75%	476	20	70	54	
Speech And Hearing Sci	0201	Speech Lang & Hearing Sci	1	2	19	30	19	63%	492	16	70	38	
Speech And Hearing Sci	0203	Speech Lang & Hearing Sci	12	18	145	20	13	64%	488	24	70	221	
Total:			195	309	4,569	584	N/A	N/A	15,360	N/A	N/A	7,292	
19 Type A Class Labs			Average:	10	16	240	31	20	73%	808	29	52	384

University of Arizona
Instructional Space Utilization Analysis | 2016 Fall Semester

ANALYSIS OF TYPE B CLASS LABORATORIES

Class Laboratories – Type B

Building	Room	Department	Classes Per Week	Weekly Class Hours	Total Weekly Demand	No. of Student Stations	Average Station Occupied		Room NASF	NASF per Student	Standard	WSCH
							Number	Percent		Station		
Art Bldg. & Art Museum	0105	School of Art	8	24	148	30	19	62%	1,189	40	70	444
Art Bldg. & Art Museum	0201	School of Art	2	6	24	24	12	50%	1,183	49	70	72
Art Bldg. & Art Museum	0203	School of Art	11	17	180	20	18	92%	793	40	70	226
Art Bldg. & Art Museum	0205	School of Art	6	18	122	25	20	81%	1,203	48	70	366
Art Bldg. & Art Museum	0301	School of Art	8	24	138	20	17	86%	1,196	60	70	414
Art Bldg. & Art Museum	0307	School of Art	6	18	64	20	11	53%	1,990	100	70	192
Art Bldg. & Art Museum	0310	School of Art	4	12	64	20	16	80%	1,975	99	70	192
Art Bldg. & Art Museum	0312	School of Art	9	14	231	53	27	51%	936	18	70	347
Art Bldg. & Art Museum	0314	School of Art	6	18	94	22	16	71%	1,085	49	70	282
Art Bldg. & Art Museum	0324	School of Art	2	6	28	20	14	70%	897	45	70	84
Art Bldg. & Art Museum	0326	School of Art	6	18	88	20	15	73%	1,971	99	70	264
Art Bldg. Add	0119	School of Art	6	18	114	24	19	79%	1,041	43	70	342
Art Bldg. Add	0140A	School of Art	6	18	112	25	19	75%	1,017	41	70	336
Art Bldg. Add	0140B	School of Art	11	34	193	25	18	71%	916	37	70	600
Art Bldg. Add	0243	School of Art	21	27	410	20	20	100%	2,727	136	70	512
Biological Sciences East	0223	Ecology & Evolutionary Bio	4	8	74	36	19	51%	1,003	28	58	148
Chemistry	0327	Chemistry & Biochemistry - Sci	1	3	4	6	4	67%	329	55	68	12
Drama Add	0014	School of Art	2	4	24	25	12	48%	608	24	70	48
Drama Add	0020	School of Art	10	28	144	25	14	58%	612	24	70	402
ENR2	S495	Sch of Geography & Dev	5	11	70	21	14	67%	780	37	55	136
ENR2	S547	Sch of Geography & Dev	13	21	317	41	25	60%	1,396	34	55	494
Esquire Apartments	0114	School of Art	4	12	54	20	14	68%	637	32	70	162
Gould-Simpson	0201	Geosciences	5	15	91	24	18	76%	712	30	55	273
Gould-Simpson	0203	Geosciences	14	22	170	36	13	37%	712	20	55	295
Gould-Simpson	0209	Geosciences	12	24	148	32	11	35%	712	22	55	267
Henry Koffler Bldg.	0111	Chemistry & Biochemistry - Sci	6	24	38	8	6	79%	983	123	68	152
Henry Koffler Bldg.	0320	Chemistry & Biochemistry - Sci	6	18	77	16	13	80%	1,328	83	68	224
Henry Koffler Bldg.	0321	Chemistry & Biochemistry - Sci	9	24	209	24	23	97%	1,328	55	68	557
Henry Koffler Bldg.	0330	Chemistry & Biochemistry - Sci	6	16	138	24	23	96%	1,328	55	68	368
Henry Koffler Bldg.	0331	Chemistry & Biochemistry - Sci	9	23	198	24	22	92%	1,328	55	68	501
Henry Koffler Bldg.	0350	Chemistry & Biochemistry - Sci	7	18	163	24	23	97%	1,328	55	68	420

University of Arizona
Instructional Space Utilization Analysis | 2016 Fall Semester

Class Laboratories – Type B

Building	Room	Department	Classes Per Week	Weekly Class Hours	Total Weekly Demand	No. of Student Stations	Average		Room NASF	NASF	Standard	WSCH	
							Station Occupied Number	Percent		per Student Station			
Henry Koffler Bldg.	0351	Chemistry & Biochemistry - Sci	9	24	212	24	24	98%	1,328	55	68	565	
Henry Koffler Bldg.	0360	Chemistry & Biochemistry - Sci	3	11	14	16	5	31%	1,328	83	68	50	
Henry Koffler Bldg.	0361	Chemistry & Biochemistry - Sci	9	24	213	24	24	99%	1,328	55	68	568	
Henry Koffler Bldg.	0410	Ecology & Evolutionary Bio	7	21	90	30	13	43%	1,221	41	58	270	
Henry Koffler Bldg.	0411	Ecology & Evolutionary Bio	2	4	11	24	6	23%	1,221	51	58	22	
Henry Koffler Bldg.	0420	Ecology & Evolutionary Bio	12	36	288	26	24	92%	1,143	44	58	864	
Henry Koffler Bldg.	0421	Chemistry & Biochemistry - Sci	12	32	270	6	23	375%	1,328	221	68	720	
Henry Koffler Bldg.	0430	Molecular and Cellular Biology	12	36	290	26	24	93%	1,143	44	58	870	
Henry Koffler Bldg.	0431	Chemistry & Biochemistry - Sci	11	30	245	24	22	93%	1,328	55	68	665	
Henry Koffler Bldg.	0440	Ecology & Evolutionary Bio	8	24	184	24	23	96%	1,221	51	58	552	
Henry Koffler Bldg.	0441	Ecology & Evolutionary Bio	8	24	189	24	24	98%	1,221	51	58	567	
Henry Koffler Bldg.	0450	Ecology & Evolutionary Bio	11	33	260	26	24	91%	1,143	44	58	780	
Henry Koffler Bldg.	0451	Chemistry & Biochemistry - Sci	11	29	257	24	23	97%	1,328	55	68	679	
Henry Koffler Bldg.	0460	Molecular and Cellular Biology	8	24	186	26	23	89%	1,143	44	58	558	
Henry Koffler Bldg.	0461	Chemistry & Biochemistry - Sci	11	29	259	24	24	98%	1,328	55	68	682	
Henry Koffler Bldg.	0510	Ecology & Evolutionary Bio	11	27	301	24	27	114%	1,221	51	58	761	
Henry Koffler Bldg.	0511	Ecology & Evolutionary Bio	10	30	123	24	11	44%	1,221	51	58	369	
Henry Koffler Bldg.	0520	Chemistry & Biochemistry - Sci	4	12	44	20	11	55%	1,328	66	68	132	
Henry Koffler Bldg.	0521	Chemistry & Biochemistry - Sci	9	24	207	24	23	96%	1,328	55	68	550	
Henry Koffler Bldg.	0530	Chemistry & Biochemistry - Sci	7	19	160	20	23	114%	1,328	66	68	432	
Henry Koffler Bldg.	0531	Chemistry & Biochemistry - Sci	7	18	148	24	21	88%	1,328	55	68	379	
Henry Koffler Bldg.	0540	Chemistry & Biochemistry - Sci	8	16	124	24	16	65%	1,221	51	68	248	
Henry Koffler Bldg.	0550	Chemistry & Biochemistry - Sci	6	24	34	15	6	38%	1,143	76	68	136	
Henry Koffler Bldg.	0551	Chemistry & Biochemistry - Sci	9	24	193	24	21	89%	1,328	55	68	516	
Henry Koffler Bldg.	0561	Chemistry & Biochemistry - Sci	8	21	185	24	23	96%	1,328	55	68	484	
Physics-Atmospheric Sci	0208	Physics	2	6	33	24	17	69%	554	23	68	99	
Physics-Atmospheric Sci	0212	Physics	6	17	118	26	20	76%	681	26	68	334	
Physics-Atmospheric Sci	0216	Physics	11	32	240	26	22	84%	634	24	68	697	
Physics-Atmospheric Sci	0272	Physics	2	3	42	21	21	100%	604	29	68	63	
Physics-Atmospheric Sci	0320	Physics	5	12	102	25	20	82%	976	39	68	245	
Physics-Atmospheric Sci	0322	Physics	10	29	234	25	23	94%	773	31	68	679	
Physics-Atmospheric Sci	0326	Physics	12	33	267	25	22	89%	773	31	68	733	
Total:			486	1,271	9,452	1,497	N/A	N/A	71,764	N/A	N/A	24,401	
63 Type B Class Labs			Average:	8	20	150	24	18	81%	1,139	54	65	387

University of Arizona
Instructional Space Utilization Analysis | 2016 Fall Semester

ANALYSIS OF TYPE C CLASS LABORATORIES

Class Laboratories – Type C

Building	Room	Department	Classes Per Week	Weekly Class Hours	Total Weekly Demand	No. of Student Stations	Average Station Occupied		Room NASF	NASF per Student Station	Standard	WSCH
							Number	Percent				
Aerospace & Mech Eng.	N231	Aerospace & Mechanical Eng.	9	23	110	25	12	49%	1,888	76	110	275
Aerospace & Mech Eng.	S402	Aerospace & Mechanical Eng.	1	2	72	25	72	288%	1,137	45	110	108
Aerospace & Mech Eng.	S420	Aerospace & Mechanical Eng.	1	3	13	20	13	65%	980	49	110	39
AHSC	3115	COM Academic Affairs	1	1	10	60	10	17%	1,282	21	70	10
Biological Sci East	0124	Sch of Nat Rsrc&Enviro-Res	6	11	163	30	30	98%	838	28	43	337
Centralized Animal Facility	0129	Animal&Biome Sciences-Res	10	12	247	41	23	56%	1,053	26	75	306
Civil Eng.	0001	Civil Eng. and Eng. Mechanics	1	3	16	18	16	89%	557	31	110	48
Civil Eng.	0116	Civil Eng. and Eng. Mechanics	2	6	11	15	6	37%	841	56	110	33
Civil Eng.	0120	Civil Eng. and Eng. Mechanics	1	3	18	16	18	113%	2,646	165	110	54
Civil Eng.	0318	Civil Eng. and Eng. Mechanics	2	6	37	18	19	103%	452	25	110	111
CAPLA – West	0204	School of Architecture	5	9	207	50	42	83%	2,875	58	70	372
CAPLA – West	0302	School of Architecture	9	14	628	60	63	105%	3,356	56	70	942
Drama	0006	Sch Theatre Film & Television	2	3	22	20	11	55%	540	27	125	33
Drama Add	0007	Sch Theatre Film & Television	5	15	53	12	11	88%	1,147	96	125	159
Drama Add	0110	Sch Theatre Film & Television	5	15	52	20	10	52%	4,229	211	125	156
Drama Add	0114	Sch Theatre Film & Television	10	18	160	25	16	64%	1,876	75	125	286
Drama Add	0116	Sch Theatre Film & Television	6	12	102	75	17	23%	1,840	25	125	204
Drama Add	0125	Sch Theatre Film & Television	15	24	231	30	16	52%	1,872	62	125	346
Drama Add	0266	Sch Theatre Film & Television	14	18	310	50	22	44%	1,853	37	125	404
Drama Add	0268	Sch Theatre Film & Television	2	3	16	20	8	40%	304	15	125	24
Drama Add	0270	Sch Theatre Film & Television	8	11	119	25	15	61%	1,173	47	125	169
Electrical & Computer Eng.	0301	Electrical and Computer Eng.	11	27	272	25	23	92%	739	30	90	624
Electrical & Computer Eng.	0311	Electrical and Computer Eng.	4	12	90	16	23	141%	832	52	90	270
Electrical & Computer Eng.	0320	Electrical and Computer Eng.	4	12	33	16	8	52%	852	53	90	99
Electrical & Computer Eng.	0321	Electrical and Computer Eng.	3	9	33	20	11	55%	652	33	90	99
ENR2	N350	Sch of Nat Rsrc&Enviro-Res	16	21	303	40	18	45%	1,702	43	43	409
Forbes	0412	Entomology-Ins	4	6	56	25	14	56%	682	27	75	84
Fred Fox School of Music	0035	School of Music	15	18	241	30	15	51%	979	33	53	281
Fred Fox School of Music	0106	School of Music	22	22	333	50	14	28%	1,149	23	53	333

University of Arizona
Instructional Space Utilization Analysis | 2016 Fall Semester

Class Laboratories – Type C

Building	Room	Department	Classes Per Week	Weekly Class Hours	Total Weekly Demand	No. of Student Stations	Average Station Occupied		Room NASF	NASF per Student Station	Standard	WSCH	
							Number	Percent					
Fred Fox School of Music	0121	School of Music	27	29	379	18	14	77%	772	43	53	407	
Fred Fox School of Music Add	0114	School of Music	25	28	411	30	14	47%	1,093	36	53	463	
Fred Fox School of Music Add	0162	School of Music	27	27	683	75	22	30%	1,876	25	53	683	
Fred Fox School of Music Add	0170	School of Music	17	27	540	80	29	37%	2,351	29	53	925	
Fred Fox School of Music Add	0232	School of Music	22	22	569	125	21	17%	2,663	21	53	569	
Henry Koffler Bldg.	0102	Animal&Biomed Sciences-Res	8	24	192	27	24	89%	1,224	45	75	576	
Henry Koffler Bldg.	0108	Animal&Biomed Sciences-Res	4	12	72	24	18	75%	1,191	50	75	216	
Henry Koffler Bldg.	0114	Animal&Biomed Sciences-Res	8	24	266	24	33	139%	1,224	51	75	798	
Ina E. Gittings Bldg.	0004	School of Dance	9	9	221	30	24	80%	3,022	101	125	221	
Ina E. Gittings Bldg.	0016	School of Dance	18	24	447	30	26	86%	3,017	101	125	532	
Ina E. Gittings Bldg.	0124	School of Dance	26	40	817	70	32	45%	3,665	52	125	1,211	
Ina E. Gittings Bldg.	0130	School of Dance	14	23	336	60	24	41%	3,930	66	125	532	
John W. Harshbarger Bldg.	0208	Hydrology and Water Rsrcs	4	9	69	30	19	62%	837	28	43	168	
Marley	0217	CALS Career & Acad Svcs	3	6	64	16	25	156%	1,235	77	60	150	
Marley	0218	CALS Career & Acad Svcs	4	10	72	33	18	55%	910	28	60	179	
Meinel Optical Sci Add	0438	College of Optical Sciences	5	15	25	10	5	50%	499	50	68	75	
Meinel Optical Sci Add	0450	College of Optical Sciences	4	12	24	6	6	100%	480	80	68	72	
Meinel Optical Sci Add	0454	College of Optical Sciences	3	10	17	6	6	94%	480	80	68	56	
Mines And Metallurgy	0015	Materials Science & Eng.	4	8	53	30	13	44%	770	26	100	106	
Physics-Atmospheric Sci	0488	Atmospheric Sciences	9	12	114	20	13	63%	756	38	68	150	
Richard A. Harvill Bldg.	0104	Sch Theatre Film & Television	6	14	106	30	19	63%	777	26	125	253	
Roy P. Drachman Hall	B209	Pharmacy Practice and Sci	3	7	75	30	25	83%	955	32	65	177	
Saguaro Hall	0104	Agricultural Education-Ins	9	16	131	35	14	40%	821	23	60	213	
Stevie Eller Dance Theatre	0110B	School of Dance	1	1	22	50	22	44%	3,848	77	125	22	
Stevie Eller Dance Theatre	0301	School of Dance	23	37	776	70	35	50%	3,678	53	125	1,242	
Vet Sci And Microbiology	0103	Soil Water and Enviro Sci-Ins	9	20	191	40	21	52%	1,133	28	68	415	
Vet Sci And Microbiology	0105	Soil Water and Enviro Sci-Ins	7	10	166	32	21	65%	964	30	68	221	
Total:			493	812	10,796	1,908	N/A	N/A	84,497	N/A	N/A	17,247	
56 Type C Class Labs			Average:	9	15	193	34	20	69%	1,509	50	89	308

University of Arizona
Instructional Space Utilization Analysis | 2016 Fall Semester

CLASS LABORATORIES UTILIZATION BY DEPARTMENT

Department	Classes Per Week	Weekly Class Hours	Total Weekly Demand	Average No. of	Average Stations Occupied		Average NASF per Student Station	Total Instructional NASF	Total WSCH
					Number	Percent			
Aerospace & Mechanical Engr	11	27	195	23	32	134%	57	4,005	422
Agricultural Education-Ins	9	16	131	35	14	40%	23	821	213
Animal&Biomedical Sciences-Res	30	72	777	29	25	90%	43	4,692	1,896
Atmospheric Sciences	9	12	114	20	13	63%	38	756	150
CALS Career & Acad Svcs	7	16	136	25	22	105%	52	2,145	329
Chemistry & Biochemistry - Sci	168	463	3392	20	18	97%	70	27,580	9,040
Civil Engr and Engr Mechanics	6	18	82	17	15	85%	69	4,496	246
College of Optical Sciences	12	37	66	7	6	81%	70	1,459	203
COM Academic Affairs	1	1	10	60	10	17%	21	1,282	10
Computer Science	29	46	928	41	28	79%	15	1,252	1,429
Ecology & Evolutionary Biology	50	138	972	27	17	67%	46	8,329	2,689
Electrical and Computer Engr	22	60	428	19	16	85%	42	3,075	1,092
Eller Administration	16	27	529	24	36	148%	46	1,110	931
Entomology-Ins	4	6	56	25	14	56%	27	682	84
Geosciences	31	61	409	31	14	49%	24	2,136	835
Hydrology and Water Resources	4	9	69	30	19	62%	28	837	168
Institutional Administration	54	65	1166	29	18	64%	21	1,750	1,374
Law Instruction	6	13	67	50	11	22%	24	2,447	148
Law Library	11	21	135	15	12	79%	53	801	263
Materials Science & Engr	4	8	53	30	13	44%	26	770	106
Molecular and Cellular Biology	43	129	1024	26	24	91%	44	4,572	3,072
Pharmacy Practice and Science	3	7	75	30	25	83%	32	955	177
Physics	48	132	1036	25	21	85%	29	4,995	2,850
Physiology-Undergraduate Prog	21	51	610	21	24	112%	47	3,074	1,527
Public Health Administration	2	3	36	24	18	75%	20	476	54
Sch of Geography & Development	18	32	387	31	19	63%	36	2,176	630
Sch of Nat Resource&Enviro-Res	22	32	466	35	24	72%	35	2,540	746
Sch Theatre Film & Television	73	133	1171	31	14	54%	62	15,611	2,034

University of Arizona
Instructional Space Utilization Analysis | 2016 Fall Semester

<u>Class Laboratories Utilization by Department</u>									
Department	Classes Per Week	Weekly Class Hours	Total Weekly Demand	Average No. of	Average Stations Occupied		Average NASF per Student Station	Total Instructional NASF	Total WSCH
					Number	Percent			
School of Anthropology	11	16	218	35	23	66%	26	896	235
School of Architecture	14	23	835	55	52	94%	57	6,231	1,314
School of Art	128	316	2232	24	17	70%	55	21,976	5,285
School of Dance	91	133	2619	52	27	58%	75	21,160	3,760
School of Information	2	2	29	30	15	48%	28	834	29
School of Music	155	173	3156	58	19	41%	30	10,883	3,661
Soil Water and Enviro Sci-Ins	16	30	357	36	21	58%	29	2,097	636
Speech Language & Hearing Sci	13	20	164	25	16	63%	20	980	259
Teachg Learning Sociocult Stds	30	45	687	38	22	59%	23	1,740	1,043

GLOSSARY

CLASSROOMS:

Instructional rooms that may have traditional tablet arm chair configuration or narrow table and chair configuration, to provide added student work surface. Room capacities typically range from 30 to 100 stations.

CLASS LABORATORIES:

Instructional rooms used primarily for scheduled instruction that require special purpose equipment or a specific space configuration for student participation, experimentation, observation, or practice in an academic discipline.

COLLABORATIVE CLASSROOMS:

Classrooms with movable tables and chairs arranged for small group collaboration and screens or monitors around the room so that all students have a good view of the presentation materials.

COMPUTER INSTRUCTIONAL CLASSROOMS:

Classrooms or class labs equipped with computer terminals at each student station, providing students the ability to individually access class materials stored on computer files. The rooms are typically equipped with desktop computers which support the technology requirements for courses in a broad range of academic disciplines.

LECTURE HALLS:

Classrooms for large classes with either fixed tables and/or chairs or traditional theater type seating. Room capacities typically exceed 100 stations.

NASF/STUDENT STATION:

The number of square feet used to accommodate one student in the particular room type and/or discipline being evaluated. Net assignable square feet (NASF) per student station is calculated by dividing the total room square footage by the number of student stations (capacity) in that room.

$$\text{NASF/STUDENT STATION} = \text{Room Area} / \text{Room Capacity}$$

NASF/STUDENT STATION STANDARD:

The number of square feet per individual student recommended by Council of Educational Facility Planners, International (CEFPI) for instructional purposes. Class lab standard sizes are determined by discipline.

PERCENT STATIONS OCCUPIED WHEN SCHEDULED:

The percentage of student stations occupied during scheduled classes as related to the room capacity.

$$\text{PERCENT STATIONS OCCUPIED WHEN SCHEDULED} = \text{Enrollment} / \text{Capacity}$$

University of Arizona
Instructional Space Utilization Analysis | 2016 Fall Semester

SEMINAR ROOMS:

Classrooms with movable tables and chairs which provide the instructor flexibility to arrange a class in small discussion teams or to meet with the class as a whole. Room capacities are typically fewer than 30 stations.

STUDENT STATIONS:

The number of chairs or seats available in the room. Also referred to as “Capacity.”

TOTAL WEEKLY STUDENT STATION DEMAND:

The number of students enrolled in a class, multiplied by the number of class sessions per week (within analysis limits).

$$\text{TOTAL WEEKLY STUDENT STATION DEMAND} = \text{Enrollment} * \text{Count of meeting days}$$

WEEKLY CLASS HOURS:

The number of hours a room is used for scheduled classes each week. This figure does not include any tutoring, conferences, meetings or other activities that may occur in a room. Weekly class hours are calculated by multiplying the number of hours a course meets by the number of days the course meets each week.

$$\text{WEEKLY CLASS HOURS} = \text{Total meeting hours [within analysis]} * \text{Count of meeting days [within analysis]}$$

WEEKLY STUDENT CONTACT HOURS (WSCH):

A unit of measure that represents one hour of instruction given to one student in one week. Weekly student contact hours are calculated by multiplying the enrollment of a course by the weekly contact hours during which the course is held.

$$\text{WEEKLY STUDENT CONTACT HOURS} = \text{Enrollment} * \text{Weekly Class Hours}$$

University of Arizona
Instructional Space Utilization Analysis | 2016 Fall Semester

APPENDIX A

NON INSTRUCTIONAL ROOM TYPE SUMMARY

Non-Instructional Room Type	Number of Rooms		NASF Occupied		Total WSCH *	
	Central Scheduling	Department Scheduling	Central Scheduling	Department Scheduling	Central Scheduling	Department Scheduling
Assembly		3		11,729		5,233
Athletic Or Physical Ed Serv		1		347		40
Circulation Area		2		683		142
Clinic Service		1		570		39
Conference		78		38,080		6,614
Exhibition		2		2,597		1,281
Meeting Room		11		10,239		1,210
Office		8		2,894		1,016
Office Service		6		4,679		1,406
Open Computer Site		10		11,865		2,228
Open Laboratory		11		27,102		4,680
Open-Stack Study Room		1		689		84
Research Core Lab Service		1		911		18
Research/ Non-Class Lab		7		6,380		565
Research/ Non-Class Lab Service		1		1,879		57
Shop		1		540		450
Study Room		7		4,084		907
Total		151		125,268		25,969

* Does not include approximately 158,616 WSCH (148,240 SCH) due to independent studies, online courses, evening, weekend and off campus courses